



**ASEAN  
BIOLOGICAL THREATS  
SURVEILLANCE CENTRE**

**ABC  
BVC  
BWB  
A**

# Morbidity and Mortality Weekly Report (MMWR)

Infectious & Emerging Diseases  
in the ASEAN Region

With Support by:



Korea Disease Control and  
Prevention Agency



in partnership with  
Canada



Kemenkes



ASSOCIATION  
OF SOUTHEAST  
ASIAN NATIONS



This report aims to provide the current situation on infectious and emerging diseases in the ASEAN Region. We collate various information from multiple official sources and publicly available sources and is published every week on Wednesday. ABVC follows Epi-week calendar in its publication. For feedback and/or suggestions, please write to [support@aseanbiosurveillance.org](mailto:support@aseanbiosurveillance.org)

## Editorial

### ASEAN SECRETARIAT

Assistant Director and Head of Health Division  
Human Development Directorate

ASEAN Socio-Cultural Community Department  
**Jennifer Frances dela Rosa, MPH, MSc HPPF**

Programme Coordinator (Health Security)  
Mitigation of Biological Threats (MBT) Programme  
**Michael Glen, MSSc**

### EDITORIAL TEAM

Editor-in-Chief

**Abdurrahman, MPH**

Managing Editor

**Aldilas Achmad Nursetyo, MD, MS**

Associate Editor

**Abdul Haris Ibrahim, MHI**

**Habibi Rohman Rosyad, MSc**

**Nindy Fadellah Wulan, MPH**

Copy Editor

**Ajeng Sekar Pratiwi, A.Md**

**Dwi Sasongko, A.Md.**

Supporting Staff

**Svetlana Pratiwi, SKM**

**Divva Kaamila, S.Tr.Kom**

**Natasha Alicia Putri, S.Tr.Kom**

### PUBLISHER

ASEAN Biological Threat Surveillance Centre

Health Policy Agency

Ministry of Health of Indonesia

Jl. Percetakan Negara No. 29 Johar Baru, Central Jakarta, Indonesia 10560

**E-mail:** [support@aseanbiosurveillance.org](mailto:support@aseanbiosurveillance.org)

**Facebook:** <https://www.facebook.com/abvc.official/>

**Instagram:** <https://www.instagram.com/abvc.official/>

## Table of Contents

<b>Emerging Diseases</b> .....	<b>2</b>
Mpox .....	3
COVID-19 .....	7
Influenza .....	9
Avian Influenza (H5N1) .....	11
Hantavirus .....	11
Legionellosis.....	11
Meningococcal Disease .....	12
Poliomyelitis .....	12
<b>Zoonosis</b> .....	<b>11</b>
Rabies.....	12
<b>Vector-borne Diseases</b> .....	<b>13</b>
Dengue.....	14
Malaria .....	15
<b>Vaccine-preventable Diseases</b> .....	<b>16</b>
Measles .....	17

A person wearing a full-body white protective suit, including a hood and a face mask with a filter. They are wearing black gloves and holding a black cylindrical object in their right hand. The background is a blurred laboratory or clinical setting.

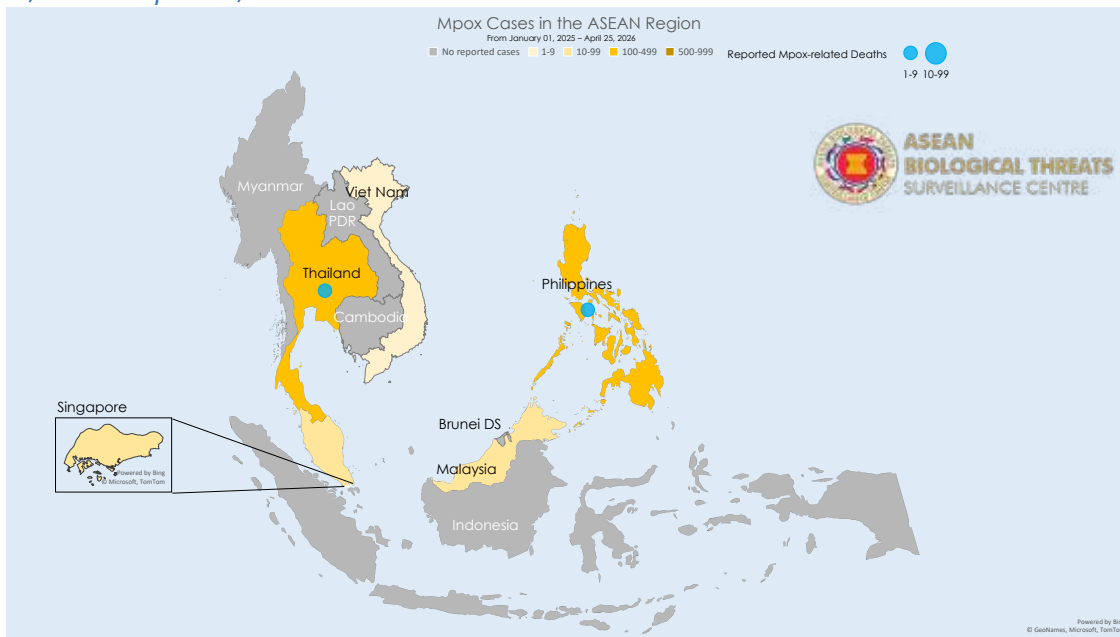
# Emerging Diseases



# MPOX

## Mpox Cases Reported in the ASEAN Region

January 1, 2025 – April 25, 2026



Source:

1. Ministry of Health Cambodia
2. Ministry of Health Republic of Indonesia (<https://infeksiemerging.kemkes.go.id>)
3. WHO Mpox Outbreak: Global Trends, accessed April 28, 2026 ([https://worldhealthorg.shinyapps.io/mpox\\_global/](https://worldhealthorg.shinyapps.io/mpox_global/))
4. Communicable Disease Agency, Ministry of Health Singapore, accessed April 28, 2026, <https://www.cda.gov.sg/resources/weekly-infectious-diseases-bulletin-2025/>

### Key Findings

- The number of Mpox cases from January 1 to April 25, 2026, are **49 cases** with **two deaths**.
- There were **no new cases of Mpox** in epi-week 16 of 2026.
- **59,940 confirmed cases** of mpox have been reported in **other regions** (other than the **ASEAN** region):

### Mpox cases in the ASEAN region in 2025 and 2026 (as of 25 April, 2026)

ASEAN Member States	Cumulative Cases in 2025	Cumulative Deaths in 2025 (CFR)	Cumulative Cases in 2026	New Cases in epi-week 16	Cumulative Deaths in 2026 (CFR)
<b>Cambodia</b> <sup>1</sup>	0	0 (0.00%)	0	0	0 (0.00%)
<b>Indonesia</b> <sup>2</sup>	0	0 (0.00%)	0	0	0 (0.00%)
<b>Lao PDR</b> <sup>3</sup>	0	0 (0.00%)	0	0	0 (0.00%)
<b>Malaysia</b> <sup>3</sup>	14	0 (0.00%)	4	0	0 (0.00%)
<b>Philippines</b> <sup>3</sup>	286	6 (2.10%)	0	0	0 (0.00%)
<b>Singapore</b> <sup>4</sup>	23	0 (0.00%)	11	0	0 (0.00%)
<b>Thailand</b> <sup>3</sup>	157	3 (1.91%)	34	0	2 (5.88%)
<b>Vietnam</b> <sup>3</sup>	2	0 (0.00%)	0	0	0 (0.00%)
<b>ASEAN Total</b>	<b>482</b>	<b>9 (1.87%)</b>	<b>49</b>	<b>0</b>	<b>2 (4.08%)</b>

Source:

1. Ministry of Health Cambodia
2. Ministry of Health Republic of Indonesia (<https://infeksiemerging.kemkes.go.id>)
3. WHO Mpox Outbreak: Global Trends, accessed April 28, 2026 ([https://worldhealthorg.shinyapps.io/mpox\\_global/](https://worldhealthorg.shinyapps.io/mpox_global/))
4. Communicable Disease Agency, Ministry of Health Singapore, accessed April 28, 2026, <https://www.cda.gov.sg/resources/weekly-infectious-diseases-bulletin-2025/>



## Top 5 countries with the most mpox cases globally (Jan. 1, 2025 to Apr. 25, 2026)

Country	Cumulative Cases	New Cases Since Previous Report	Cumulative Deaths	CFR
<b>Democratic Republic of Congo</b>	24,171	266	51	0.21%
<b>Uganda</b>	7,160	0	39	0.54%
<b>Sierra Leone</b>	5,442	0	60	1.10%
<b>United States of America</b>	2,938	159	0	0.00%
<b>Guinea</b>	2,287	32	7	0.31%

Source: WHO Mpox Outbreak: Global Trends, accessed April 28, 2026 ([https://worldhealthorg.shinyapps.io/mpx\\_global/](https://worldhealthorg.shinyapps.io/mpx_global/))

## Mpox cases per region (Jan. 1, 2025 to Apr. 25, 2026)

REGIONS	CUMULATIVE CASES 2025-2026	NEW CASES SINCE THE PREVIOUS REPORT	CUMULATIVE DEATHS	CFR
<b>AFRICA<sup>1</sup></b>	47.693	732	217	0,45%
<b>AMERICAS<sup>1</sup></b>	6.584	483	9	0,14%
<b>ASEAN<sup>1</sup></b>	531	-	11	2,07%
<b>ASIA &amp; OCEANIA<sup>2</sup></b>	2.170	58	-	0,00%
<b>EUROPE<sup>1</sup></b>	3.493	113	1	0,03%
<b>TOTAL</b>	<b>60.471</b>	<b>1,386</b>	<b>238</b>	<b>0,39%</b>

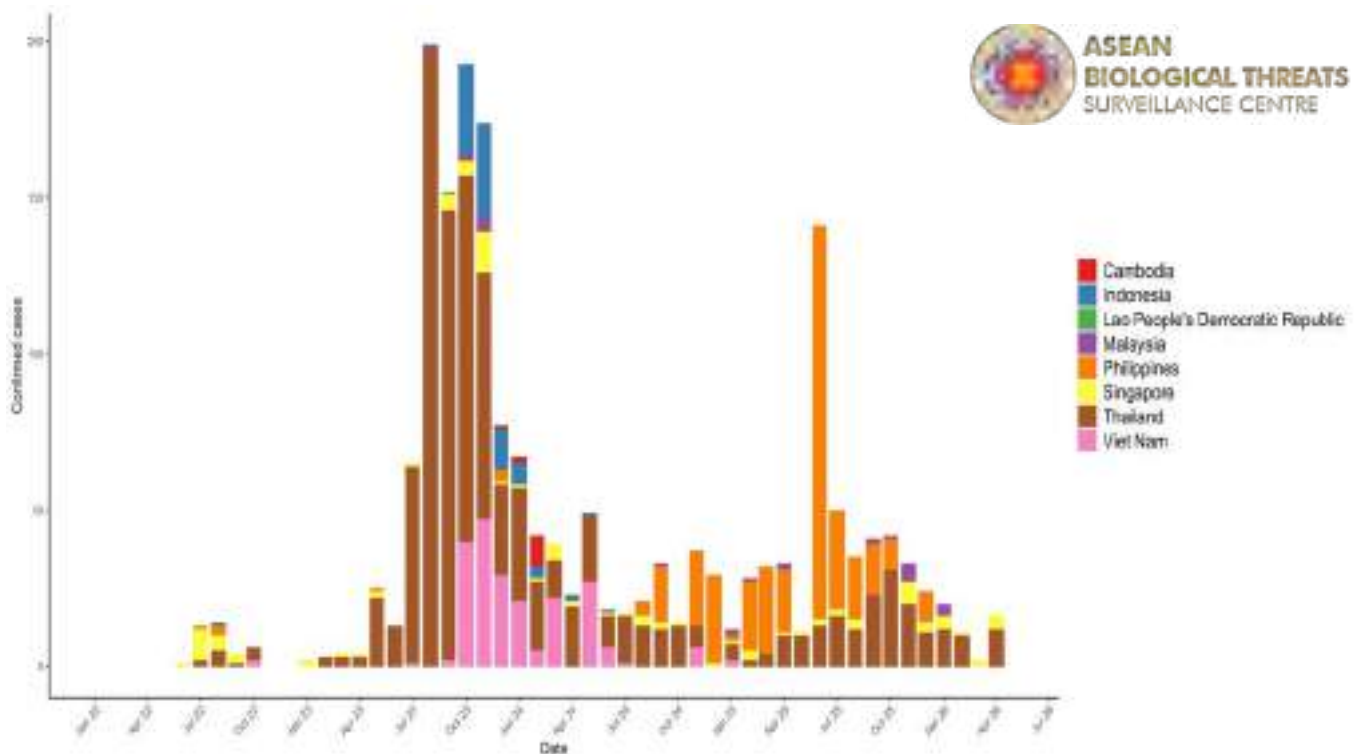
Source:

1. WHO Mpox Outbreak: Global Trends, accessed April 28, 2026 ([https://worldhealthorg.shinyapps.io/mpx\\_global/](https://worldhealthorg.shinyapps.io/mpx_global/))

2. Our World in Data, accessed April 28, 2026 (<https://ourworldindata.org/mpox>)

## Trend of Mpox Confirmed Cases in the ASEAN Region

January 1, 2022 to April 25, 2026



Source:

1. Ministry of Health Cambodia

2. Ministry of Health Republic of Indonesia (<https://infeksiemerging.kemkes.go.id>)

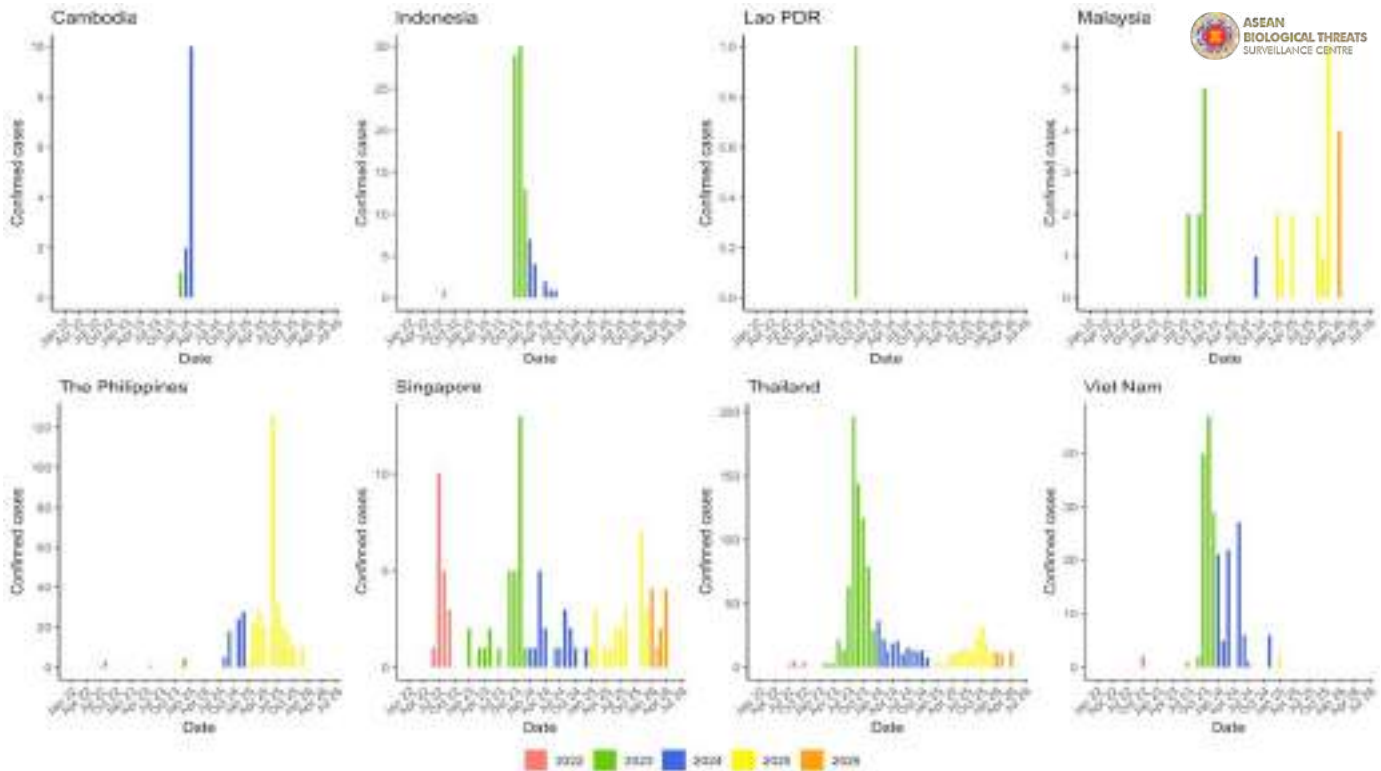
3. WHO Mpox Outbreak: Global Trends, accessed April 28, 2026 ([https://worldhealthorg.shinyapps.io/mpx\\_global/](https://worldhealthorg.shinyapps.io/mpx_global/))

4. Communicable Disease Agency, Ministry of Health Singapore, accessed April 28, 2026, <https://www.cda.gov.sg/resources/weekly-infectious-diseases-bulletin-2025/>



## Trend of Mpox Confirmed Cases among ASEAN Member States

January 1, 2022 to April 25, 2026

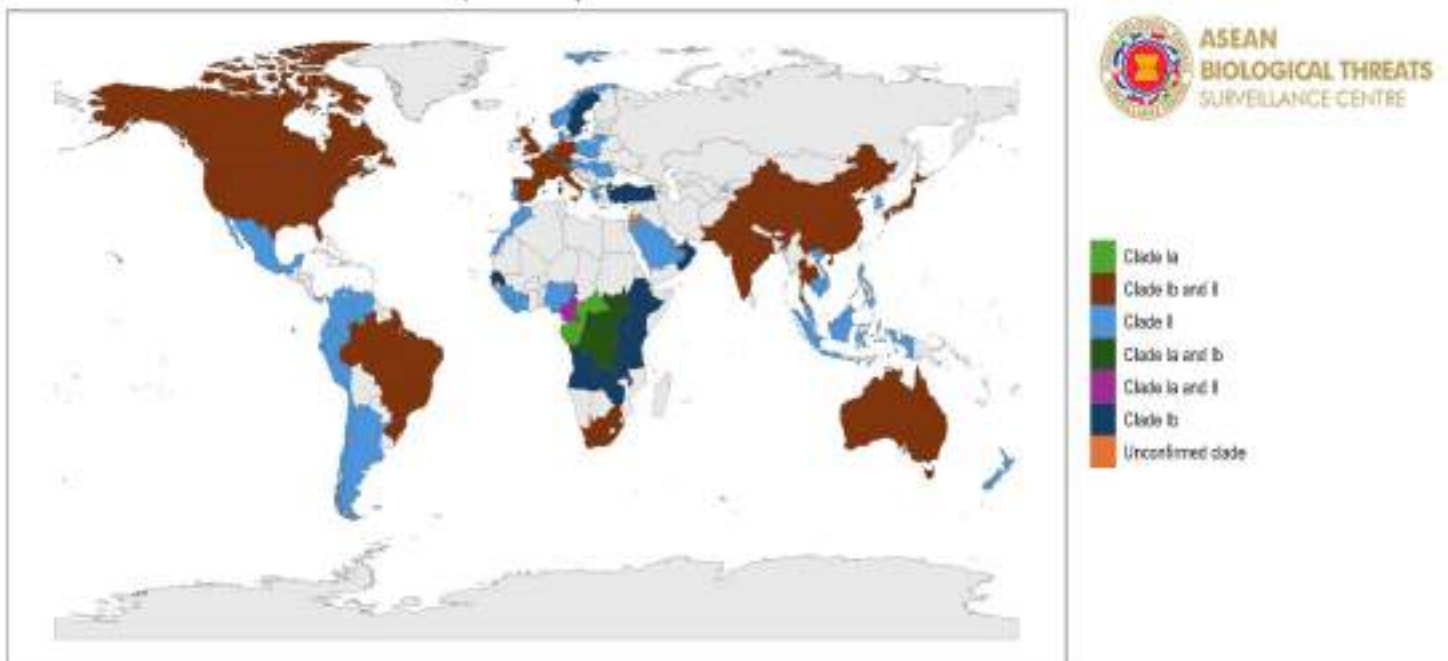


Source:

1. Ministry of Health Cambodia
2. Ministry of Health Republic of Indonesia (<https://infeksiemerging.kemkes.go.id>)
3. WHO Mpox Outbreak: Global Trends, accessed April 28, 2026 ([https://worldhealthorg.shinyapps.io/mpox\\_global/](https://worldhealthorg.shinyapps.io/mpox_global/))
4. Communicable Disease Agency, Ministry of Health Singapore, accessed April 28, 2026, <https://www.cda.gov.sg/resources/weekly-infectious-diseases-bulletin-2025/>

## Distribution of Mpox Variants in The Global

As of April 25, 2026



Source: GISAID and WHO



## Distribution of Mpox Variant (Clade) in the ASEAN and Neighbouring Countries and Areas As of April 25, 2026



Source:

1. Ministry of Health Cambodia
2. Ministry of Health Republic of Indonesia (<https://infeksiemerging.kemkes.go.id>)
3. WHO Mpox Outbreak: Global Trends, accessed April 28, 2026 ([https://worldhealthorg.shinyapps.io/mpx\\_global/](https://worldhealthorg.shinyapps.io/mpx_global/))
4. Communicable Disease Agency, Ministry of Health Singapore, accessed April 28, 2026, <https://www.cda.gov.sg/resources/weekly-infectious-diseases-bulletin-2025/>



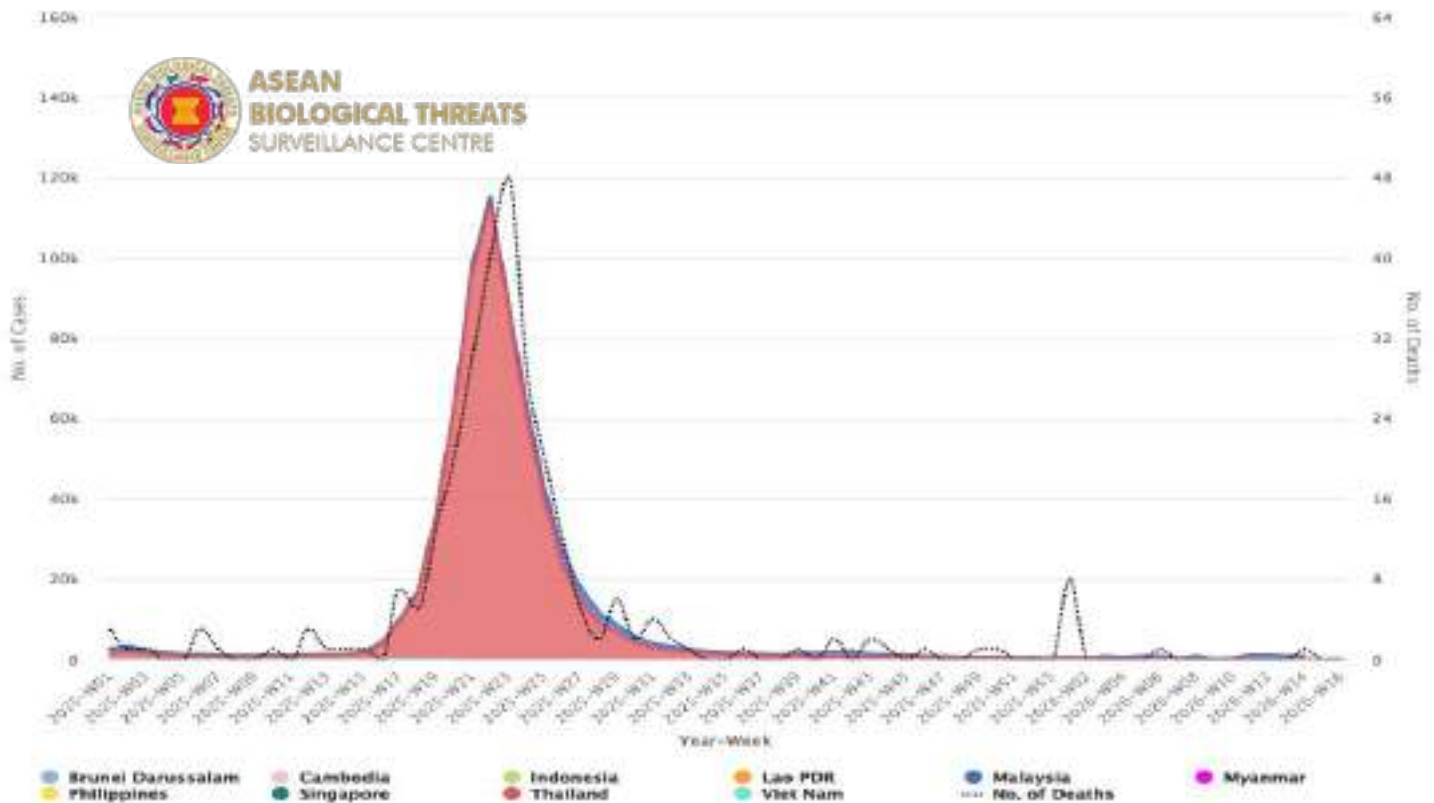
# COVID-19

## Key Findings

- Recently, the number of **confirmed COVID-19 cases reported to ASEAN are declining** compared to the previous year.
- The number of confirmed COVID-19 cases reported from 1 January 2026 to 25 April 2026 are **9,828 cases** with **0.1 % Case Fatality rate (CFR)**
- In April 2026, this week continues to show a stable **Omicron-only** landscape across ASEAN, with no new variant of concern detected. **JN.1** and its monitored descendants (including **LP.8.1**, **NB.1.8.1**, **KP.3**, **XEC** and **XFG**) remain predominant in Indonesia, the Philippines, Laos, Singapore, Thailand and Vietnam, while Brunei is still largely driven by earlier **BA.\*** lineages and Myanmar by **XBB.1.16** and related **XBB** lineages, indicating heterogeneous but overall stable variant patterns in the region.

## ASEAN Weekly COVID-19 Cases and Deaths

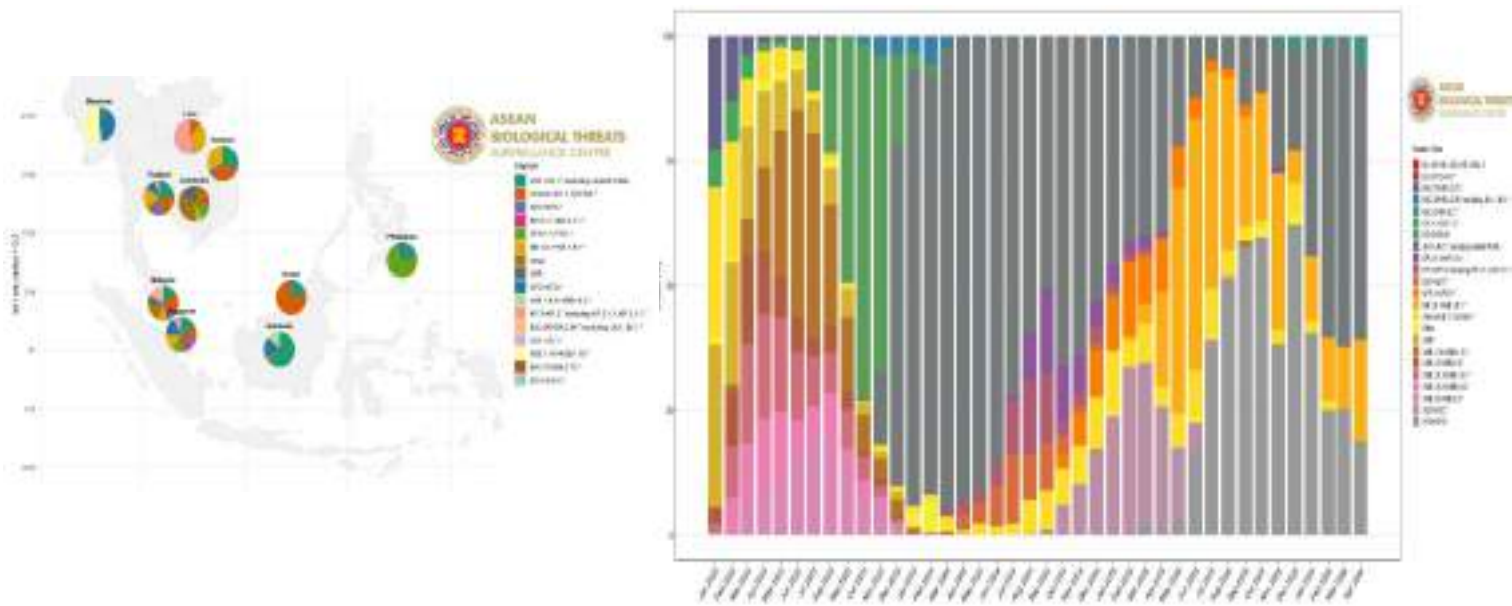
From January 1, 2025 to April 25, 2026



Sources: [Singapore Government](#), [MOH Indonesia](#), [MOH Cambodia](#), [DDC Thailand](#), [MOH Myanmar](#), [MOH Malaysia](#), and [WHO](#) accessed on April 28, 2026



## COVID-19 Variants Frequencies Among the ASEAN Member States As of April 2026



Source: GISAID. "hCoV-19 Variants Dashboard," accessed April 28, 2026 , <https://gisaid.org/hcov-19-variants-dashboard/>.

### COVID-19 Variants Frequencies in the ASEAN Region From January 2023 to April 2026

Country	JN.1+JN.1.*	Omicron B.1.1.529+BA.*	XEC+XEC.*	KP.3.1.1+KP.3.1.1.*	LP.8.1+LP.8.1.*	NB.1.8.1+NB.1.8.1.*	Other
Brunei	19.71	77.31	2.98	0.00	0.00	0.00	0.00
Cambodia	5.75	15.92	0.34	2.64	16.91	6.80	35.47
Indonesia	62.63	2.30	0.00	0.00	0.00	1.70	0.00
Laos	0.00	9.11	1.03	0.00	0.93	32.65	0.00
Malaysia	15.03	20.12	7.45	2.02	2.14	9.51	18.24
Myanmar	5.10	1.45	0.00	0.00	0.00	0.46	0.00
Philippines	20.53	2.71	0.00	0.00	71.61	0.00	0.00
Singapore	17.13	12.45	9.60	6.95	12.90	16.82	0.00
Thailand	24.53	21.07	11.30	2.56	6.03	18.53	0.00
Vietnam	30.84	29.09	7.23	0.00	0.00	32.84	0.00

Source: GISAID. "hCoV-19 Variants Dashboard," accessed April 28, 2026 , <https://gisaid.org/hcov-19-variants-dashboard/>.

### From January 2023 to April 2026

Country	XBB*	XFG+ XFG.*	XBB.1.9.2+ XBB1.9.2.*	KP.3+KP.3.*	BA.2.86+ BA.2.86.*	LB.1+LB.1.*	XBB.1.16+ XBB.1.16.*	BA.2.75+BA.2.75.*
Brunei	0.00	0.00	0.00	0.00	0.00	0.00	0.00	0.00
Cambodia	15.82	0.36	0.00	0.00	0.00	0.00	0.00	0.00
Indonesia	0.00	19.74	13.63	0.00	0.00	0.00	0.00	0.00
Laos	0.00	0.70	0.00	55.58	0.00	0.00	0.00	0.00
Malaysia	3.47	4.10	0.00	4.91	9.54	3.47	0.00	0.00
Myanmar	0.00	40.90	0.00	0.00	0.00	0.00	52.09	0.00
Philippines	0.00	5.15	0.00	0.00	0.00	0.00	0.00	0.00
Singapore	0.00	16.20	0.00	5.05	0.00	2.08	0.00	0.42
Thailand	0.00	10.86	0.00	3.42	1.71	0.00	0.00	0.00
Vietnam	0.00	0.00	0.00	0.00	0.00	0.00	0.00	0.00

Source: GISAID. "hCoV-19 Variants Dashboard," accessed April 28, 2026 , <https://gisaid.org/hcov-19-variants-dashboard/>.



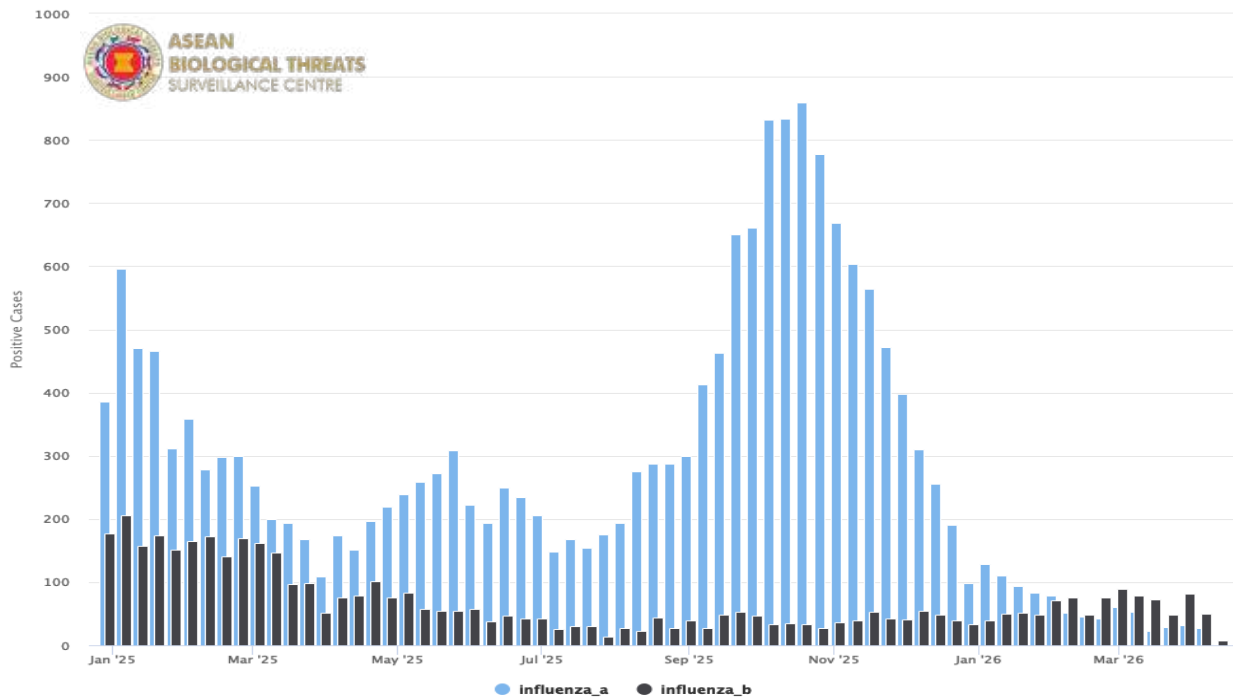
# INFLUENZA

## Key Findings

- Recently, most influenza cases among ASEAN Member States had decreased.
- Most of Influenza-like illness (ILI) and severe acute respiratory infection (SARI) cases were decrease among some ASEAN Member States.

## Trends of Influenza Confirmed Cases in the ASEAN region

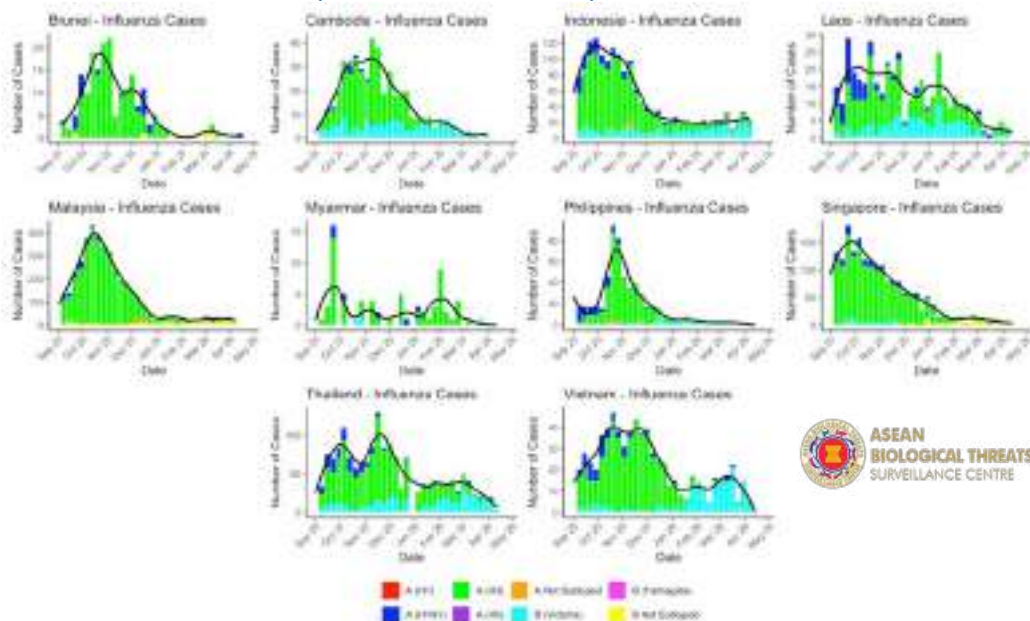
From January 1, 2025 to April 25, 2026



Source: WHO FluNet, accessed on April 28, 2026 (<https://www.who.int/tools/fluinet>)

## Trend of Influenza Cases among ASEAN Member States

September 1, 2025 to April 25, 2026

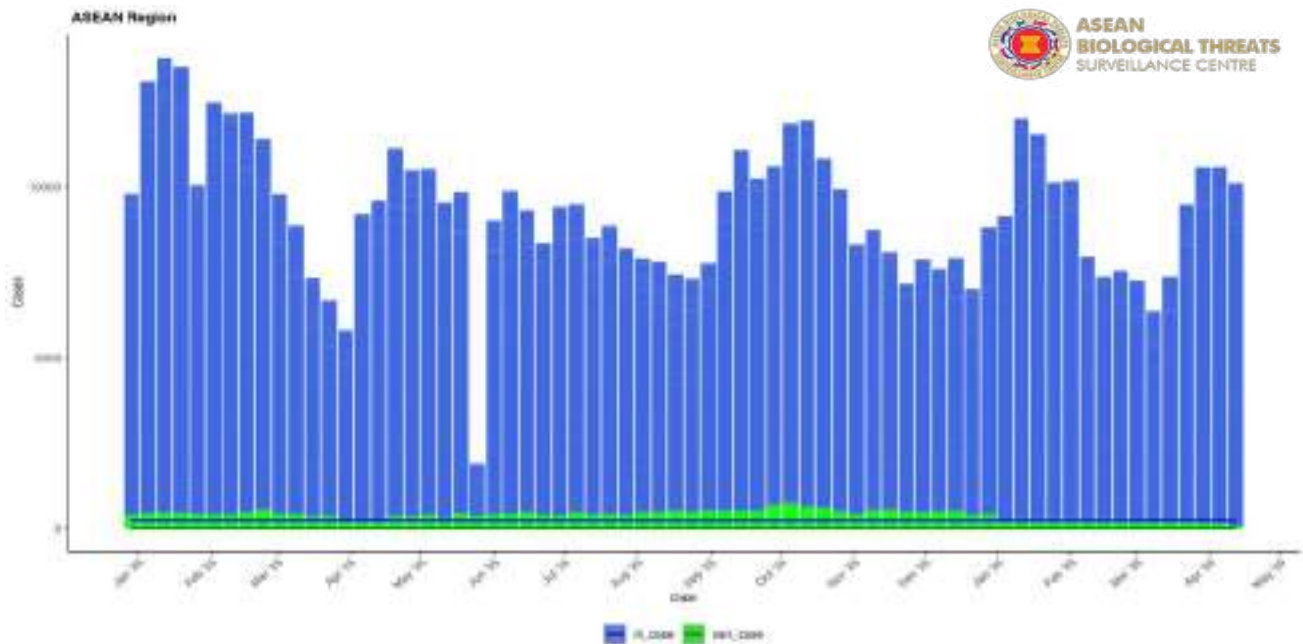


Source: WHO FluNet, accessed on April 28, 2026 (<https://www.who.int/tools/fluinet>)



## Trend of Influenza-like Illness (ILI) and Severe Acute Respiratory Illness (SARI) in the ASEAN Region

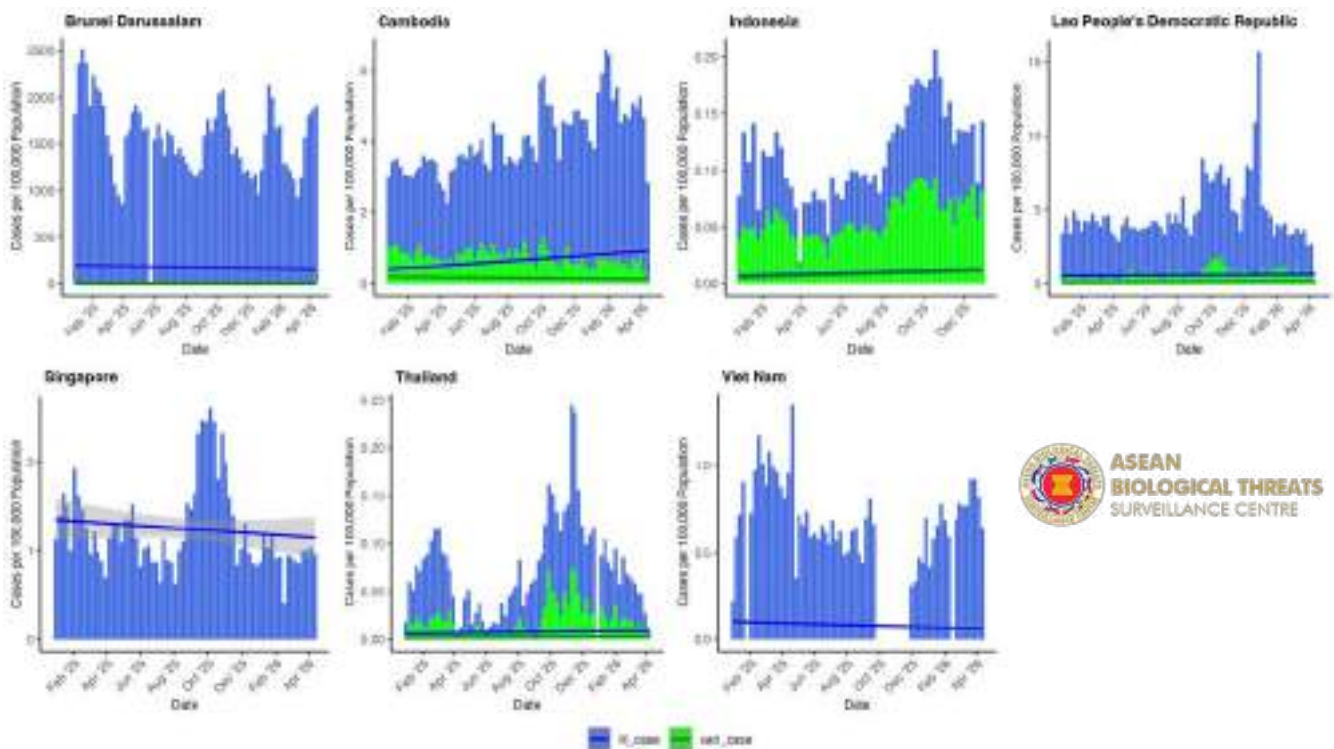
January 1, 2025 to April 25, 2026



Source: WHO FluID, accessed April 28, 2026 (<https://www.who.int/teams/global-influenza-programme/surveillance-and-monitoring/influenza-surveillance-outputs>)

## Trend of Influenza-like Illness (ILI) and Severe Acute Respiratory Illness (SARI) among ASEAN Member States

January 1, 2025 to April 25, 2026



Source: WHO FluID, accessed April 28, 2026 (<https://www.who.int/teams/global-influenza-programme/surveillance-and-monitoring/influenza-surveillance-outputs>)



## AVIAN INFLUENZA (H5N1)

### Key Findings

- In 2026, Avian Influenza (H5N1) is found in Cambodia. In Epi-week 16, there was one new case in the ASEAN region.

### Distribution of Avian Influenza (H5N1) cases in the ASEAN Region

AMS	Avian Influenza (H5N1)					
	Cumulative Cases 2025	Cumulative Deaths 2025	Epi-week 16		Period 2026	
			New Cases	New Deaths	Cumulative Cases	Cumulative Deaths
<b>Cambodia</b>	18	9	1	0	4	0
<b>Viet Nam</b>	1	0	0	0	0	0
<b>Total</b>	19	9	1	0	4	0

Source: [WHO](#), [Ministry of Health of Cambodia](#).

## HANTAVIRUS

### Key Findings

- In 2026, hantavirus is found in Indonesia. In Epi-week 16, 2026, there was no new case of Hantavirus reported.

### Distribution of Hantavirus Cases in the ASEAN Region

AMS	Hantavirus					
	Cumulative Cases 2025	Cumulative Deaths 2025	Epi-week 16		Period 2026	
			New Cases	New Deaths	Cumulative Cases	Cumulative Deaths
<b>Indonesia</b>	18	0	0	0	5	0
<b>Total</b>	18	0	0	0	5	0

Source: [MoH Indonesia](#)

## LEGIONELLOSIS

### Key Findings

- In 2026, the legionellosis is found in Singapore and Thailand. In Epi-week 16, there were no cases of Legionellosis reported.

### Distribution of Legionellosis Cases in the ASEAN Region

AMS	Legionellosis					
	Cumulative Cases 2025	Cumulative Deaths 2025	Epi-week 16		Period 2026	
			New Cases	New Deaths	Cumulative Cases	Cumulative Deaths
<b>Indonesia</b>	49	2	0	0	0	0
<b>Singapore</b>	62	0	0	0	7	0
<b>Thailand</b>	24	1	0	0	17	0
<b>Total</b>	135	3	0	0	24	0

Source: [MoH Indonesia](#), [MoH Singapore](#), [MoH Thailand](#)



## MENINGOCOCCAL DISEASE

### Key Findings

- In 2026, meningococcal disease is found in Indonesia, Singapore, Thailand, and Viet Nam. In Epi-week 16, 2026, there was no case of Meningococcal Disease reported among AMS.

### Distribution of Meningococcal Disease Cases in the ASEAN Region

AMS	Meningococcal Disease					
	Cumulative Cases 2025	Cumulative Deaths 2025	Epi-week 16		Period 2026	
			New Cases	New Deaths	Cumulative Cases	Cumulative Deaths
<b>Indonesia</b>	0	0	0	0	1	1
<b>Singapore</b>	7	0	0	0	2	0
<b>Thailand</b>	39	5	0	0	7	4
<b>Viet Nam</b>	95	0	0	0	1	0
<b>Total</b>	141	5	0	0	11	5

Source: [WHO](#), [MoH Indonesia](#), [MoH Singapore](#), [MoH Thailand](#)

## POLIOMYELITIS

### Key Findings

- In 2026, Poliomyelitis has not been reported among AMS. In Epi-week 16, there was no new case of Poliomyelitis reported.

### Distribution of Poliomyelitis Cases in the ASEAN Region

AMS	Poliomyelitis					
	Cumulative Cases 2025	Cumulative Deaths 2025	Epi-week 16		Period 2026	
			New Cases	New Deaths	Cumulative Cases	Cumulative Deaths
<b>Lao PDR</b>	1	0	0	0	0	0
<b>Singapore</b>	1	0	0	0	0	0
<b>Total</b>	2	0	0	0	0	0

Source: [WHO](#)

# Zoonosis

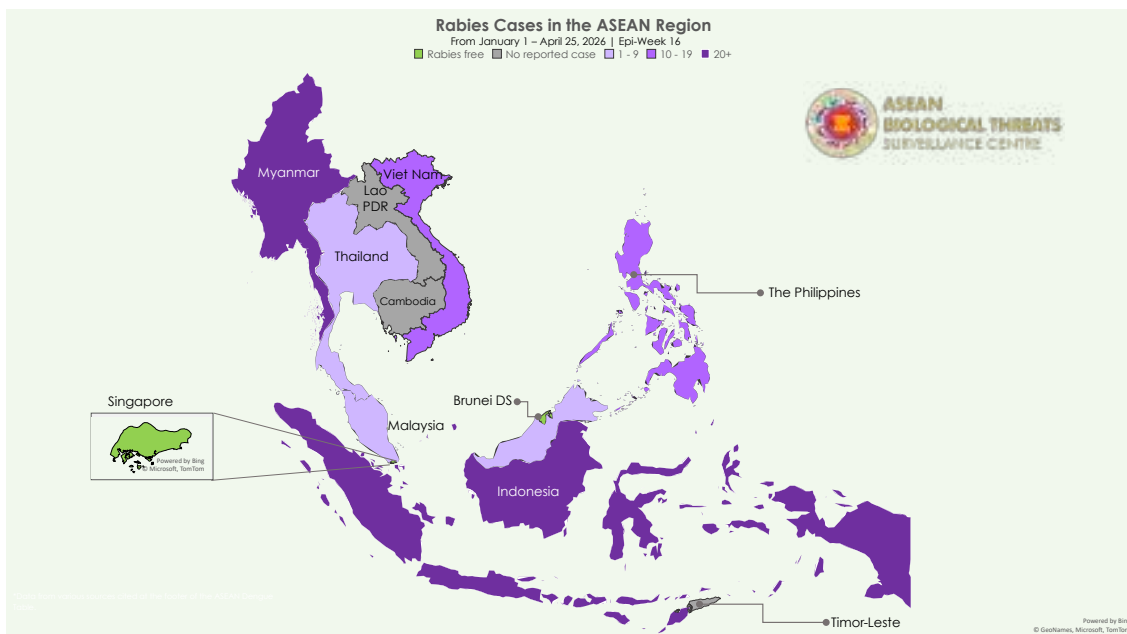




# RABIES

## Key Findings

- The **ASEAN** region reported **six** new rabies cases in Epi-week 16, 2026.
- The total number of rabies cases from January 1 to April 25, 2026 are **101** cases with **100%** CFR.



## Rabies cases in the ASEAN region

Country	Data as of	Cumulative Cases	New Cases Since Previous Report	Cumulative Deaths	CFR
<b>Brunei Darussalam</b>					
<b>Cambodia</b>	-	-	-	-	-
<b>Indonesia<sup>1</sup></b>	April 25	32	2	32	100%
<b>Lao PDR</b>	-	-	-	-	-
<b>Malaysia<sup>2</sup></b>	March 21	3	-	3	100%
<b>Myanmar<sup>3</sup></b>	April 25	31	4	31	100%
<b>Philippines<sup>2</sup></b>	March 14	17	-	17	100%
<b>Singapore</b>					
<b>Thailand<sup>4</sup></b>	April 25	2	0	2	100%
<b>Timor-Leste</b>	-	-	-	-	-
<b>Viet Nam<sup>2</sup></b>	March 28	16	-	16	100%
<b>Total</b>		<b>101</b>	<b>6</b>	<b>101</b>	<b>100%</b>

Source:

1. Ministry of Health, Republic of Indonesia
2. Bluedot Platform, accessed April 28, 2026 (<https://portal.bluedot.global/>)
3. Department of Public Health, Ministry of Health, Myanmar
4. Bureau of Epidemiology, Department of Disease Control, Ministry of Public Health Thailand, accessed April 28, 2026, ([https://dvis3.ddc.moph.go.th/t/DDC\\_CENTER\\_DOE/views/\\_Weekly/sheet13?%3Aembed=y&%3AisGuestRedirectFromVizportal=y&%3Aorigin=card\\_share\\_link](https://dvis3.ddc.moph.go.th/t/DDC_CENTER_DOE/views/_Weekly/sheet13?%3Aembed=y&%3AisGuestRedirectFromVizportal=y&%3Aorigin=card_share_link))

# Vector-Borne Diseases





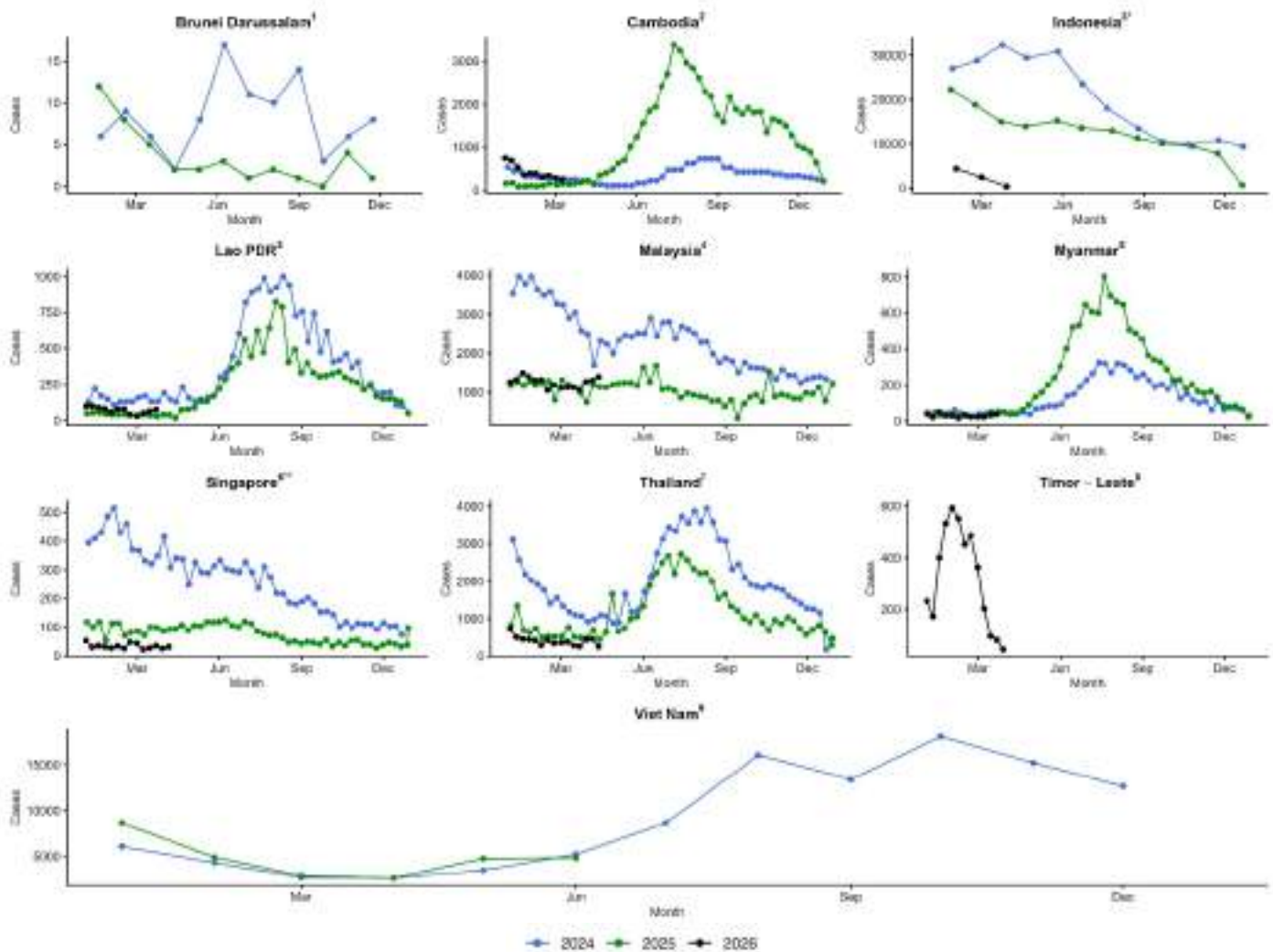
# DENGUE

## Key Findings

- The **ASEAN** region reported **1,655** new dengue cases in Epi-week 16, 2026.
- The total number of dengue cases from January 1 to April 25, 2026 are **75,959** cases and **87** deaths with **0.11% CFR**.

## Trend of Dengue cases in the ASEAN region, 2024 – 2026

Below are trend of dengue cases among ASEAN Member States since January 1, 2024 up to April 25, 2026.



Source:

1. Ministry of Health, Brunei Darussalam
2. WHO WPRO, "Dengue," World Health Organization, accessed April 28, 2026 (<https://www.who.int/westernpacific/emergencies/surveillance/dengue>).
3. Ministry of Health, Republic of Indonesia
4. Portal Rasmi iDengue untuk Komuniti, accessed April 28, 2026 (<https://idengue.mysa.gov.my/>)
5. Department of Public Health, Ministry of Health, Myanmar
6. Ministry of Health. "Weekly Infectious Disease Bulletin", accessed April 28, 2026 . (<https://www.moh.gov.sg/resources-statistics/infectious-disease-statistics/2025/weekly-infectious-diseases-bulletin>)
7. Bureau of Epidemiology, Department of Disease Control, Ministry of Public Health Thailand, accessed April 28, 2026 , ([https://dvis3.ddc.moph.go.th/t/DC\\_CENTER\\_DOE/views/\\_Weekly/sheet137%3Aembed=y%3AisGuestRedirectFromVizportal=y%3Aorigin=card\\_share\\_link](https://dvis3.ddc.moph.go.th/t/DC_CENTER_DOE/views/_Weekly/sheet137%3Aembed=y%3AisGuestRedirectFromVizportal=y%3Aorigin=card_share_link))
8. Ministry of Health, Timor-Leste
9. WHO Global Dengue Surveillance, accessed April 28, 2026 ([https://worldhealthorg.shinyapps.io/dengue\\_global/](https://worldhealthorg.shinyapps.io/dengue_global/))

- Data were updated and collected from official sources, which may have a 2-8 weeks delay in reporting. Data must be interpreted cautiously.

\*Notified dengue cases only includes severe cases Dengue Hemorrhagic fever (DHF) and Dengue Shock Syndrome (DSS)

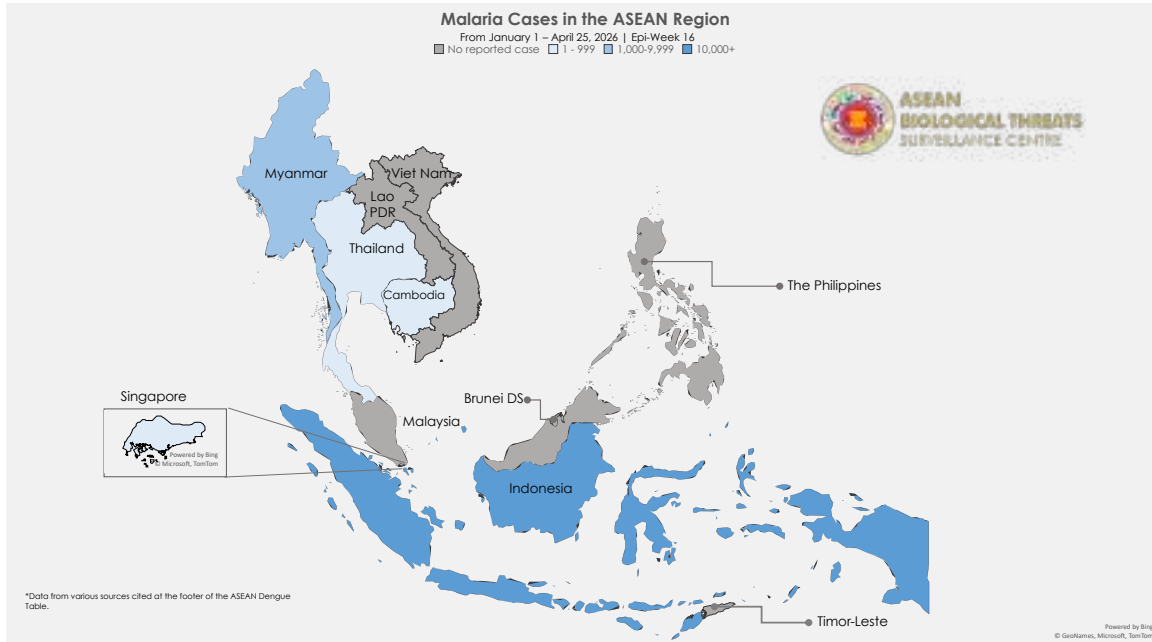
\*\*Notified dengue cases only includes Dengue Fever (DF) and DHF



# MALARIA

## Key Findings

- The **ASEAN** region reported **52** new malaria cases in Epi-week 16, 2026.
- The total number of malaria cases from January 1 to April 25, 2026 are **151,411** cases and **144** deaths with **0.10%** CFR.



## Malaria cases in the ASEAN region

Country	Data as of	Cumulative Cases	New Cases Since Last Week	Cumulative Deaths	CFR
<b>Brunei Darussalam</b>	-	-	-	-	-
<b>Cambodia</b> <sup>1</sup>	April 25	6	0	0	0.00%
<b>Indonesia</b> <sup>2</sup>	April 25	140,868	-	142	0.10%
<b>Lao PDR</b>	-	-	-	-	-
<b>Malaysia</b>	-	-	-	-	-
<b>Myanmar</b> <sup>3</sup>	February 28	9,517	-	0	0.00%
<b>Philippines</b>	-	-	-	-	-
<b>Singapore</b> <sup>4</sup>	April 25	6	1	0	0.00%
<b>Thailand</b> <sup>5</sup>	April 25	1,014	83	2	0.20%
<b>Timor-Leste</b>	-	-	-	-	-
<b>Viet Nam</b>	-	-	-	-	-
<b>Total</b>		<b>151,411</b>	<b>84</b>	<b>144</b>	<b>0.10%</b>

Source:

1. Cambodia National Malaria Center, accessed April 28, 2026 (<https://mis.cnm.gov.kh/Dashboard>)
2. Malaria Cases in Indonesia, accessed April 28, 2026 (<https://malaria.kemkes.go.id/case>)
3. Department of Public Health, Ministry of Health, Myanmar
4. Ministry of Health Singapore, accessed April 28, 2026 (<https://www.moh.gov.sg/others/resources-and-statistics/infectious-disease-statistics-2025-weekly-infectious-diseases-bulletin>)
5. Bureau of Epidemiology, Department of Disease Control, Ministry of Public Health Thailand, accessed April 28, 2026 ([https://dvis3.ddc.moph.go.th/t/DDC\\_CENTER\\_DOE/views/ Weekly/sheet13?%3Aembed=y&%3AisGuestRedirectFromVizportal=y&%3Aorigin=card\\_share\\_link](https://dvis3.ddc.moph.go.th/t/DDC_CENTER_DOE/views/Weekly/sheet13?%3Aembed=y&%3AisGuestRedirectFromVizportal=y&%3Aorigin=card_share_link))

A close-up photograph of a person wearing a white lab coat, using a syringe to draw liquid from a small glass vial. The person's hands are the central focus, with the syringe held vertically. The background is a soft, out-of-focus light blue. The text 'Vaccine-Preventable Diseases' is overlaid in large, white, bold font on the left side of the image.

# Vaccine- Preventable Diseases



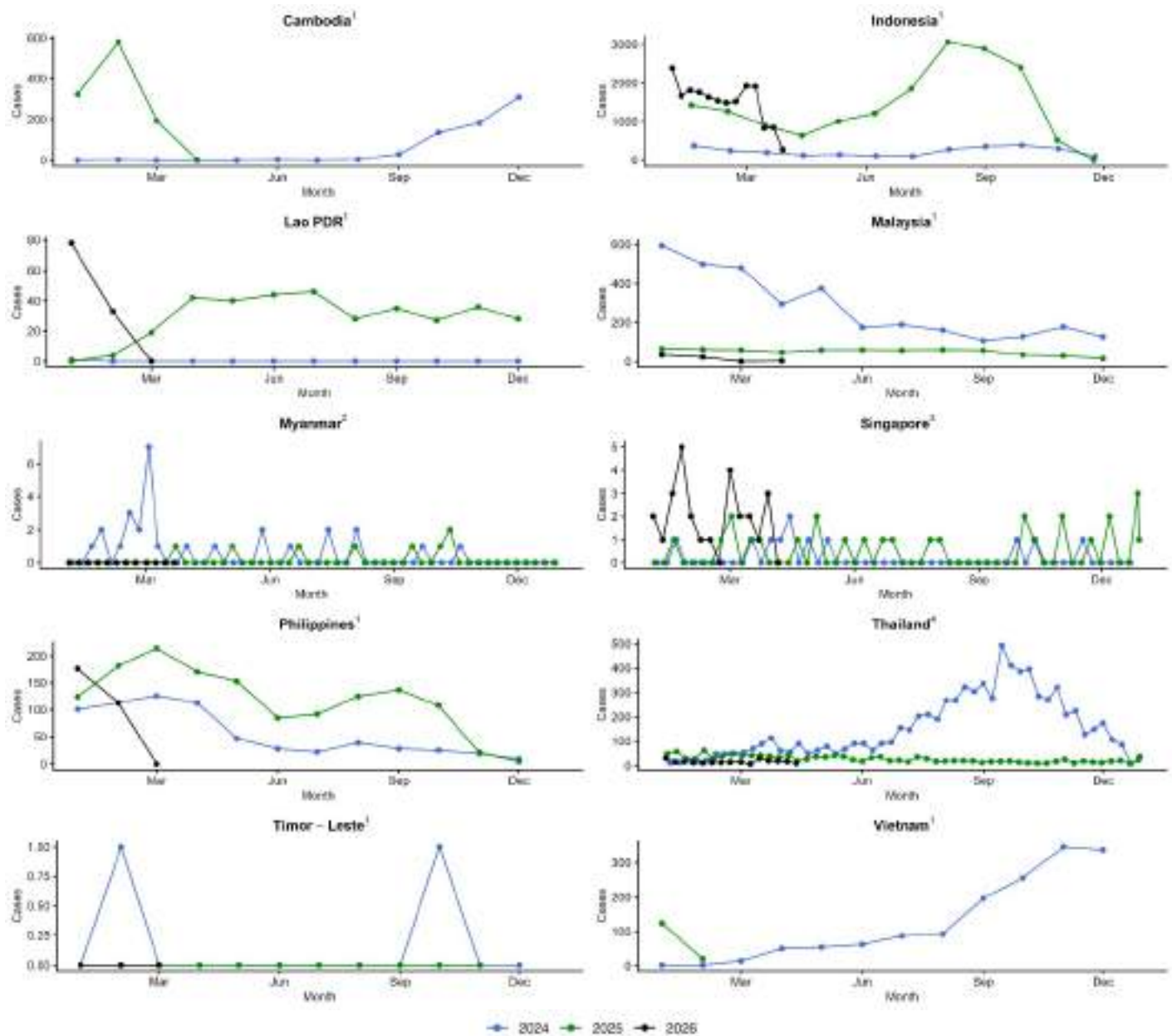
# MEASLES

## Key Findings

- The **ASEAN** region reported **eight** new measles cases in Epi-week 16, 2026.
- The total number of measles cases from January 1 to April 25, 2026 are **20,390** cases with **0%** CFR.

## Trend of Measles cases in the ASEAN region, 2024 - 2026

Below are trend of measles cases among ASEAN Member States since January 1, 2024 up to April 25, 2026.



Source:

1. Provisional Measles and Rubella Data, World Health Organization, accessed April 28, 2026 (<https://immunizationdata.who.int/global?topic=Provisional-measles-and-rubella-data&location=>)Provisional Measles and Rubella Data, World Health Organization, accessed April 28, 2026 (<https://immunizationdata.who.int/global?topic=Provisional-measles-and-rubella-data&location=>)
2. Department of Public Health, Ministry of Health, Myanmar
3. Ministry of Health Singapore, accessed April 28, 2026 (<https://www.moh.gov.sg/others/resources-and-statistics/infectious-disease-statistics-2025-weekly-infectious-diseases-bulletin>)
4. Bureau of Epidemiology, Department of Disease Control, Ministry of Public Health Thailand, accessed April 28, 2026 ([https://dvis3.ddc.moph.go.th/t/DDC\\_CENTER\\_DOE/views/\\_Weekly/sheet13?%3Aembed=y&%3AisGuestRedirectFromVizportal=y&%3Aorigin=card\\_share\\_link](https://dvis3.ddc.moph.go.th/t/DDC_CENTER_DOE/views/_Weekly/sheet13?%3Aembed=y&%3AisGuestRedirectFromVizportal=y&%3Aorigin=card_share_link))



**ASEAN  
BIOLOGICAL THREATS  
SURVEILLANCE CENTRE**

Support generated by  
**ASEAN BIOLOGICAL THREATS SURVEILLANCE CENTRE**

Email: [support@abiocasporn.org](mailto:support@abiocasporn.org)

Facebook: [abiocofficial](#)

Instagram: [abiocofficial](#)