



**ASEAN  
BIOLOGICAL THREATS  
SURVEILLANCE CENTRE**

ABC  
B  
A

# Morbidity and Mortality Weekly Report (MMWR)

Infectious & Emerging Diseases  
in the ASEAN Region

With Support by:



Korea Disease Control and  
Prevention Agency



in partnership with  
Canada



Kemenkes



ASSOCIATION  
OF SOUTHEAST  
ASIAN NATIONS

This report aims to provide the current situation on infectious and emerging diseases in the ASEAN Region. We collate various information from multiple official sources and publicly available sources and is published every week on Wednesday. For feedback and/or suggestions, please write to [support@aseanbiosurveillance.org](mailto:support@aseanbiosurveillance.org)

## Editorial

### ASEAN SECRETARIAT

Assistant Director and Head of Health Division  
Human Development Directorate

ASEAN Socio-Cultural Community Department

**Jennifer Frances dela Rosa, MPH, MSc HPPF**

Programme Coordinator (Health Security)

Mitigation of Biological Threats (MBT) Programme

**Michael Glen, MSSc**

### EDITORIAL TEAM

Editor-in-Chief

**Abdurrahman, MPH**

Managing Editor

**Aldilas Achmad Nursetyo, MD, MS**

Associate Editor

**Abdul Haris Ibrahim, MHI**

**Habibi Rohman Rosyad, MSc**

**Nindy Fadellah Wulan, MPH**

Copy Editor

**Ajeng Sekar Pratiwi, A.Md**

**Dwi Sasongko, A.Md.**

Supporting Staff

**Svetlana Pratiwi, SKM**

**Divva Kaamila, S.Tr.Kom**

**Natasha Alicia Putri, S.Tr.Kom**

### PUBLISHER

ASEAN Biological Threat Surveillance Centre

Health Policy Agency

Ministry of Health of Indonesia

Jl. Percetakan Negara No. 29 Johar Baru, Central Jakarta, Indonesia 10560

**E-mail:** [support@aseanbiosurveillance.org](mailto:support@aseanbiosurveillance.org)

**Facebook:** <https://www.facebook.com/abvc.official/>

**Instagram:** <https://www.instagram.com/abvc.official/>

## Table of Contents

|  |           |
|--|-----------|
| <b>Emerging Diseases.....</b>            | <b>2</b>  |
| Mpox.....                                | 3         |
| COVID-19.....                            | 7         |
| Influenza .....                          | 9         |
| Influenza-like Illness .....             | 10        |
| <b>Zoonosis.....</b>                     | <b>11</b> |
| Rabies .....                             | 12        |
| <b>Vector-borne Diseases .....</b>       | <b>13</b> |
| Dengue .....                             | 14        |
| Malaria .....                            | 15        |
| <b>Vaccine-preventable Diseases.....</b> | <b>16</b> |
| Measles .....                            | 17        |



# Emerging Diseases

A person wearing a full-body white protective suit, a hood, and a face mask is shown from the chest up. They are holding a black glove in their right hand. The background is a blurred laboratory or clinical setting. The text "Emerging Diseases" is overlaid in large white letters on the left side of the image.

# MPOX

## Mpox Cases Reported in the ASEAN Region

January 1, 2023 – December 20, 2025



Source:

1. Ministry of Health Cambodia
2. Ministry of Health Republic of Indonesia (<https://infeksiemerging.kemkes.go.id>)
3. WHO Mpox Outbreak: Global Trends, accessed December 23, 2025 ([https://worldhealthorg.shinyapps.io/mpx\\_global/](https://worldhealthorg.shinyapps.io/mpx_global/))
4. Communicable Disease Agency, Ministry of Health Singapore, accessed December 23, 2025, <https://www.cda.gov.sg/resources/weekly-infectious-diseases-bulletin-2025/>

## Key Findings

- From 1 January 2023 to 20 December 2025, **88,754** confirmed cases worldwide since 2023, including **423** deaths. Globally, the CFR was **0.48 %**.
- **1,757 confirmed cases** including **30 deaths** in the **ASEAN** region, with a CFR of **1.71%**.
- **86,997 confirmed cases** of mpox have been reported in **other regions** (other than the **ASEAN** region):

## Mpox cases in the ASEAN region (Jan. 1, 2023 to Dec. 20, 2025)

| ASEAN Member States            | Cumulative Cases 2023-2025 | New Cases Since Previous Report | Cumulative Deaths 2023-2025 | New Deaths Since Previous Report | CFR          |
|--------------------------------|----------------------------|---------------------------------|-----------------------------|----------------------------------|--------------|
| <b>Cambodia<sup>1</sup></b>    | 20                         | 0                               | 0                           | 0                                | 0.00%        |
| <b>Indonesia<sup>2</sup></b>   | 87                         | 0                               | 0                           | 0                                | 0.00%        |
| <b>Lao PDR<sup>3</sup></b>     | 1                          | 0                               | 0                           | 0                                | 0.00%        |
| <b>Malaysia<sup>3</sup></b>    | 24                         | 6                               | 0                           | 0                                | 0.00%        |
| <b>Philippines<sup>3</sup></b> | 346                        | 0                               | 8                           | 0                                | 2.31%        |
| <b>Singapore<sup>4</sup></b>   | 71                         | 1                               | 0                           | 0                                | 0.00%        |
| <b>Thailand<sup>3</sup></b>    | 999                        | 20                              | 13                          | 0                                | 1.30%        |
| <b>Vietnam<sup>3</sup></b>     | 209                        | 0                               | 9                           | 0                                | 4.31%        |
| <b>ASEAN Total</b>             | <b>1,757</b>               | <b>27</b>                       | <b>30</b>                   | <b>0</b>                         | <b>1.71%</b> |

Source:

1. Ministry of Health Cambodia
2. Ministry of Health Republic of Indonesia (<https://infeksiemerging.kemkes.go.id>)
3. WHO Mpox Outbreak: Global Trends, accessed December 23, 2025 ([https://worldhealthorg.shinyapps.io/mpx\\_global/](https://worldhealthorg.shinyapps.io/mpx_global/))
4. Communicable Disease Agency, Ministry of Health Singapore, accessed December 23, 2025, <https://www.cda.gov.sg/resources/weekly-infectious-diseases-bulletin-2025/>

## Top 5 countries with the most mpox cases globally (Jan. 1, 2023 to Dec. 20, 2025)

| Country                      | Cumulative Cases | New Cases Since Previous Report | Cumulative Deaths | CFR   |
|------------------------------|------------------|---------------------------------|-------------------|-------|
| Democratic Republic of Congo | 32,354           | 406                             | 80                | 0.25% |
| Uganda                       | 8,406            | 47                              | 51                | 0.61% |
| United States of America     | 6,464            | 231                             | 10                | 0.15% |
| Sierra Leone                 | 5,442            | 0                               | 60                | 1.10% |
| Burundi                      | 4,596            | 11                              | 1                 | 0.02% |

Source: WHO Mpox Outbreak: Global Trends, accessed December 23, 2025 ([https://worldhealthorg.shinyapps.io/mpx\\_global/](https://worldhealthorg.shinyapps.io/mpx_global/))

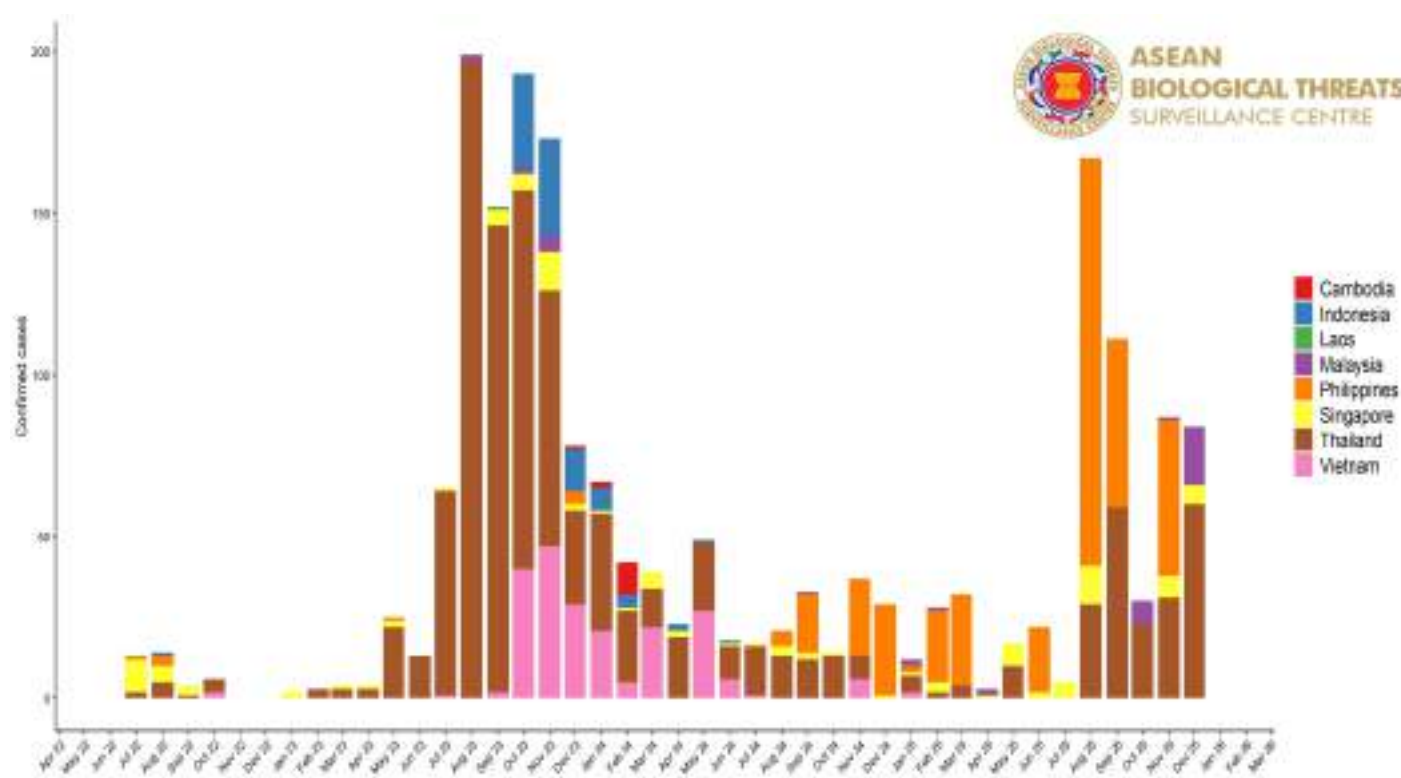
## Mpox cases per region (Jan. 1, 2023 to Dec. 20, 2025)

| REGIONS        | CUMULATIVE CASES 2023-2025 | NEW CASES SINCE THE PREVIOUS REPORT | CUMULATIVE DEATHS | CFR          |
|----------------|----------------------------|-------------------------------------|-------------------|--------------|
| AFRICA         | 58,177                     | 1,796                               | 252               | 0.43%        |
| AMERICAS       | 14,405                     | 542                                 | 102               | 0.71%        |
| ASEAN          | 1,757                      | 27                                  | 30                | 1.71%        |
| ASIA & OCEANIA | 8,751                      | 270                                 | 34                | 0.39%        |
| EUROPE         | 5,664                      | 373                                 | 5                 | 0.09%        |
| <b>TOTAL</b>   | <b>88,754</b>              | <b>3,008</b>                        | <b>423</b>        | <b>0.48%</b> |

Source: WHO Mpox Outbreak: Global Trends, accessed December 23, 2025 ([https://worldhealthorg.shinyapps.io/mpx\\_global/](https://worldhealthorg.shinyapps.io/mpx_global/))

## Trend of Mpox Confirmed Cases in the ASEAN Region

January 1, 2022 to December 20, 2025

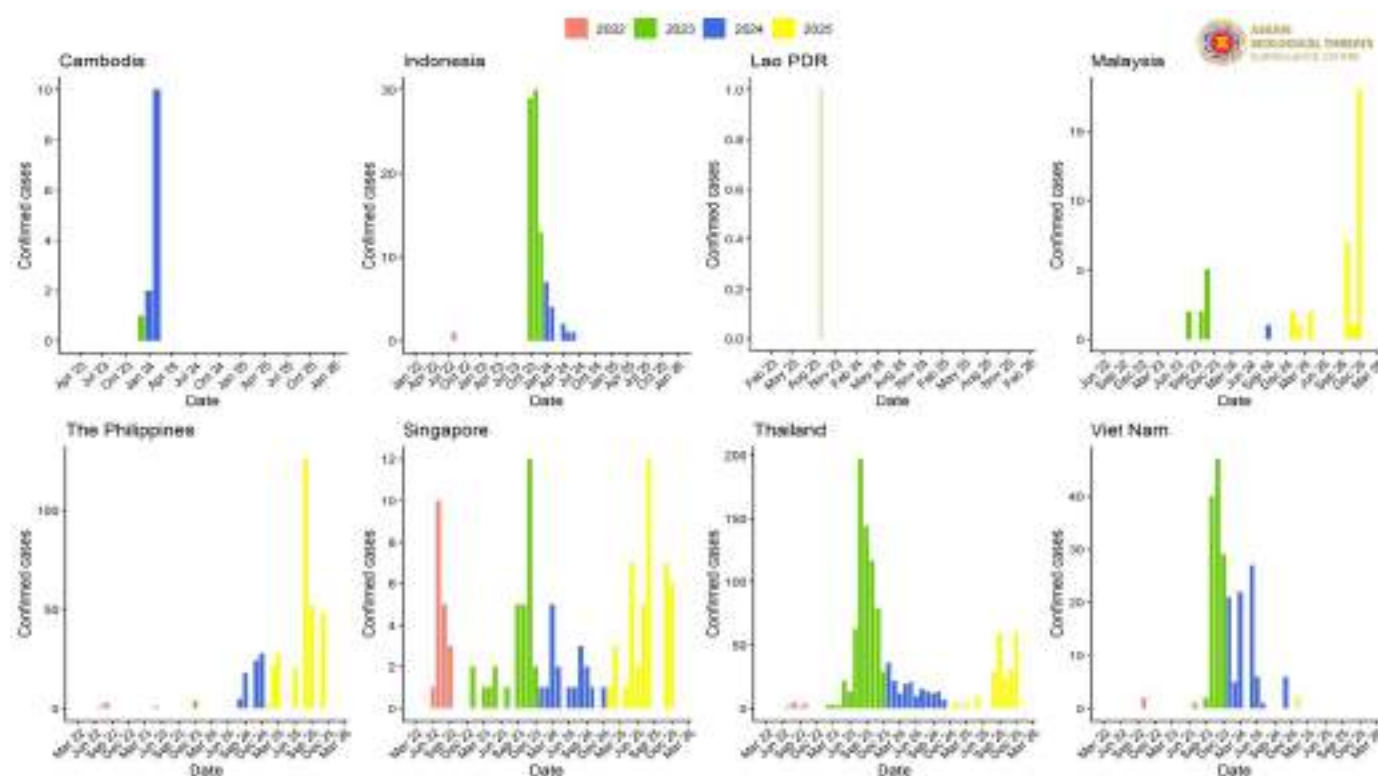


Source:

1. Ministry of Health Cambodia
2. Ministry of Health Republic of Indonesia (<https://infeksiemerging.kemkes.go.id>)
3. WHO Mpox Outbreak: Global Trends, accessed December 23, 2025 ([https://worldhealthorg.shinyapps.io/mpx\\_global/](https://worldhealthorg.shinyapps.io/mpx_global/))
4. Communicable Disease Agency, Ministry of Health Singapore, accessed December 23, 2025, (<https://www.cda.gov.sg/resources/weekly-infectious-diseases-bulletin-2025/>)

## Trend of Mpox Confirmed Cases among ASEAN Member States

January 1, 2022 to December 20, 2025

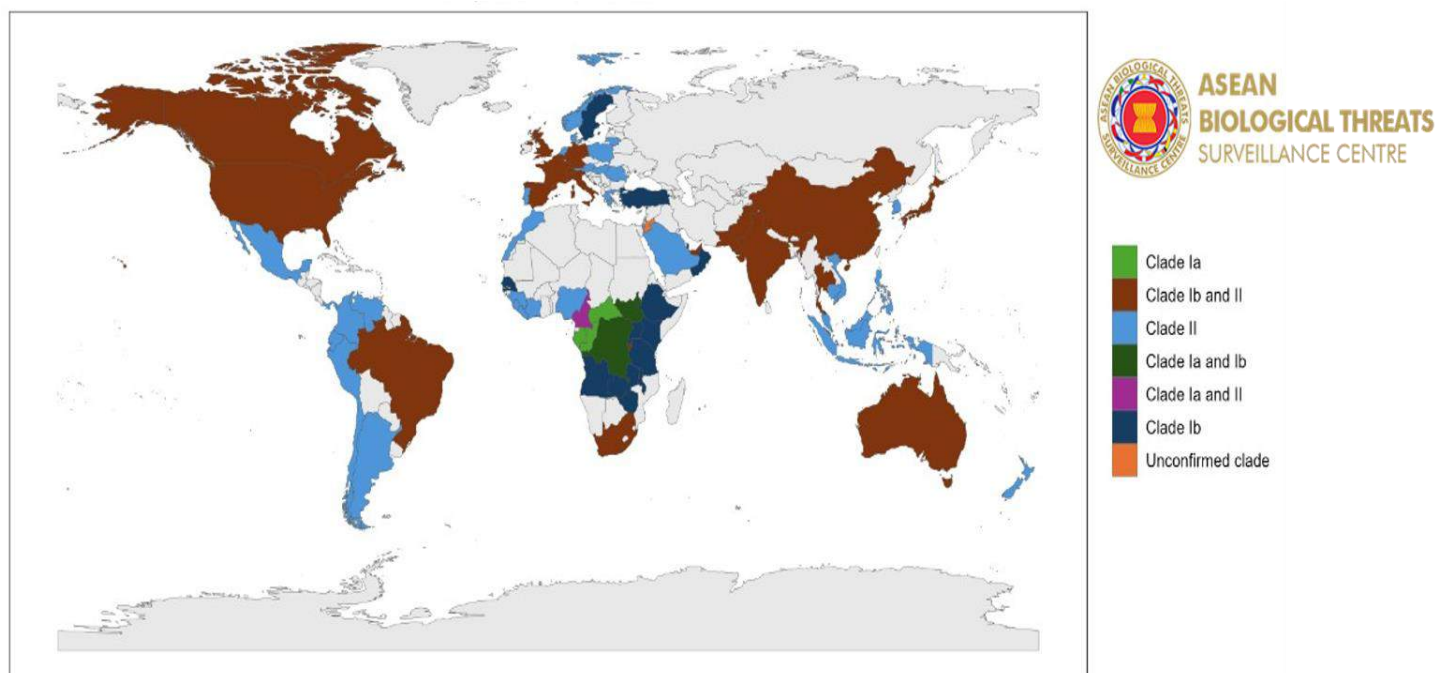


Source:

1. Ministry of Health Cambodia
2. Ministry of Health Republic of Indonesia (<https://infeksiemerging.kemkes.go.id>)
3. WHO Mpox Outbreak: Global Trends, accessed December 23, 2025 ([https://worldhealthorg.shinyapps.io/mpox\\_global/](https://worldhealthorg.shinyapps.io/mpox_global/))
4. Communicable Disease Agency, Ministry of Health Singapore, accessed December 23, 2025, <https://www.cda.gov.sg/resources/weekly-infectious-diseases-bulletin-2025/>

## Distribution of Mpox Variants in The Global

As of December 20, 2025



Source: GISAID and WHO



## Distribution of Mpox Variants in the ASEAN and Neighbouring Countries and Areas As of December 20, 2025



Source:

1. Ministry of Health Cambodia
2. Ministry of Health Republic of Indonesia (<https://infeksiemerging.kemkes.go.id>)
3. WHO Mpox Outbreak: Global Trends, accessed December 23, 2025 ([https://worldhealthorg.shinyapps.io/mpox\\_global/](https://worldhealthorg.shinyapps.io/mpox_global/))
4. Communicable Disease Agency, Ministry of Health Singapore, accessed December 23, 2025, <https://www.cda.gov.sg/resources/weekly-infectious-diseases-bulletin-2025/>

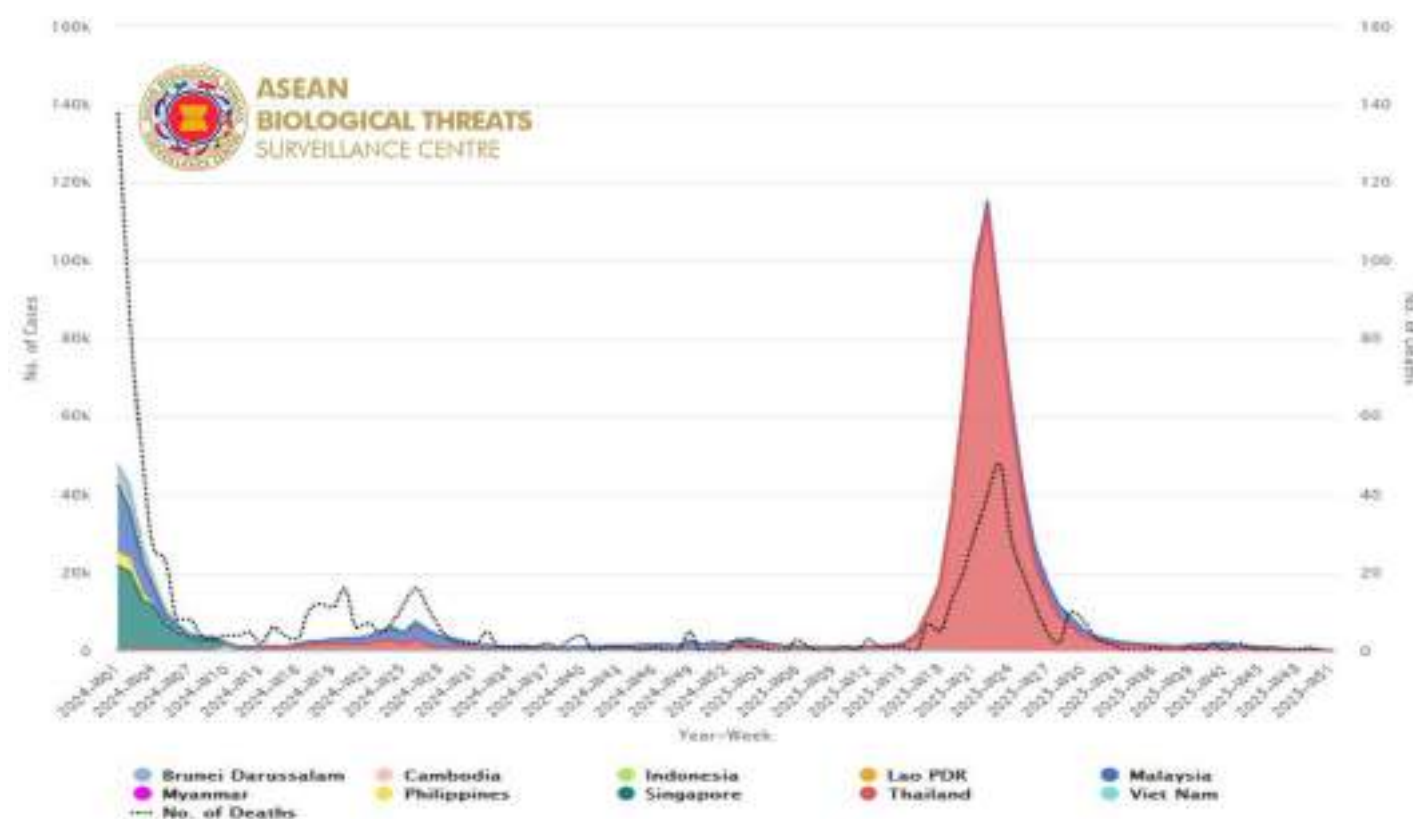
## COVID-19

### Key Findings

- As of 20 December 2025 (5PM, GMT+7), there were **778,873,420** confirmed cases **worldwide**, including **7,102,844 deaths**. Globally, the Case Fatality Rate (CFR) was **0.91%**.
- 37,762,364 total confirmed cases** of COVID-19 have been reported in the **ASEAN Region**.
- The CFR in the **ASEAN Region** was **0.98%**.
- In December 2025, the latest collection on GISAID by Indonesia and Brunei Darussalam showed dominance in **Omicron B.1.1.529+BA.\*** variant. Meanwhile, other member states such as Lao PDR, Cambodia, Malaysia, Thailand, and Viet Nam were still dominated by **NB.1.8.1** variant. Additionally, Singapore was dominated by **XFG+XFG\***.

### ASEAN Weekly COVID-19 Cases and Deaths

From January 1, 2024 to December 20, 2025



Sources: [Singapore Government](#), [MOH Indonesia](#), [MOH Cambodia](#), [DDC Thailand](#), MOH Myanmar, [MOH Malaysia](#), and [WHO](#) accessed on December 23, 2025

- A major peak in case numbers occurred in mid-2025 until week 22 as the highest peak of the cases reported. Meanwhile, after week 23, the cases continued to decrease significantly until the week of 51.
- The latest updated of COVID-19 cases were reported low by ASEAN Member States.



## COVID-19 Variants Frequencies Among the ASEAN Member States

*As of December 2025*

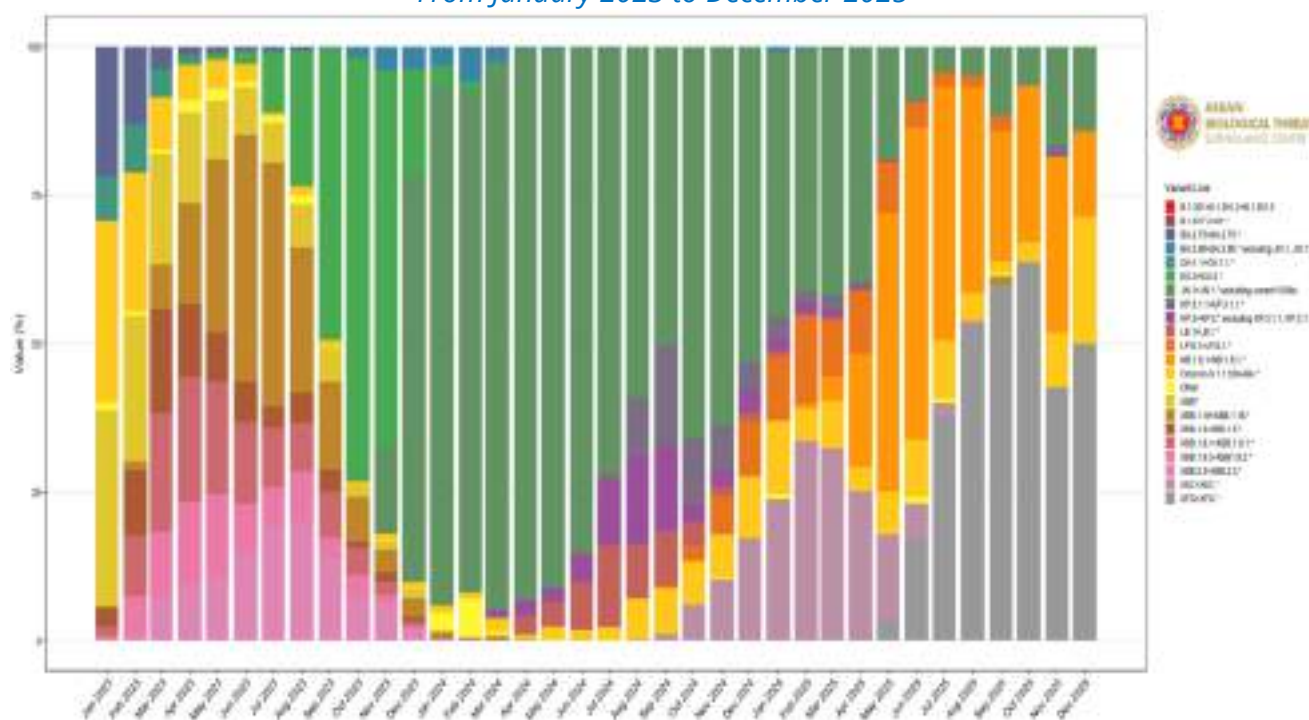


Source: GISAID, "hCoV-19 Variants Dashboard," accessed December 23, 2025, <https://gisaid.org/hcov-19-variants-dashboard/>.

In December 2025, the latest collection on GISAID by Indonesia and Brunei Darussalam showed dominance in **Omicron B.1.1.529+BA.\*** variant. Meanwhile, other member states such as Lao PDR, Cambodia, Malaysia, Thailand, and Viet Nam were still dominated by **NB.1.8.1** variant. Additionally, Singapore was dominated by **XFG+XFG\***.

## COVID-19 Variants Frequencies in the ASEAN Region

*From January 2023 to December 2025*



Source: GISAID. "hCoV-19 Variants Dashboard." accessed December 23, 2025. <https://gisaid.org/hcov-19-variants-dashboard/>

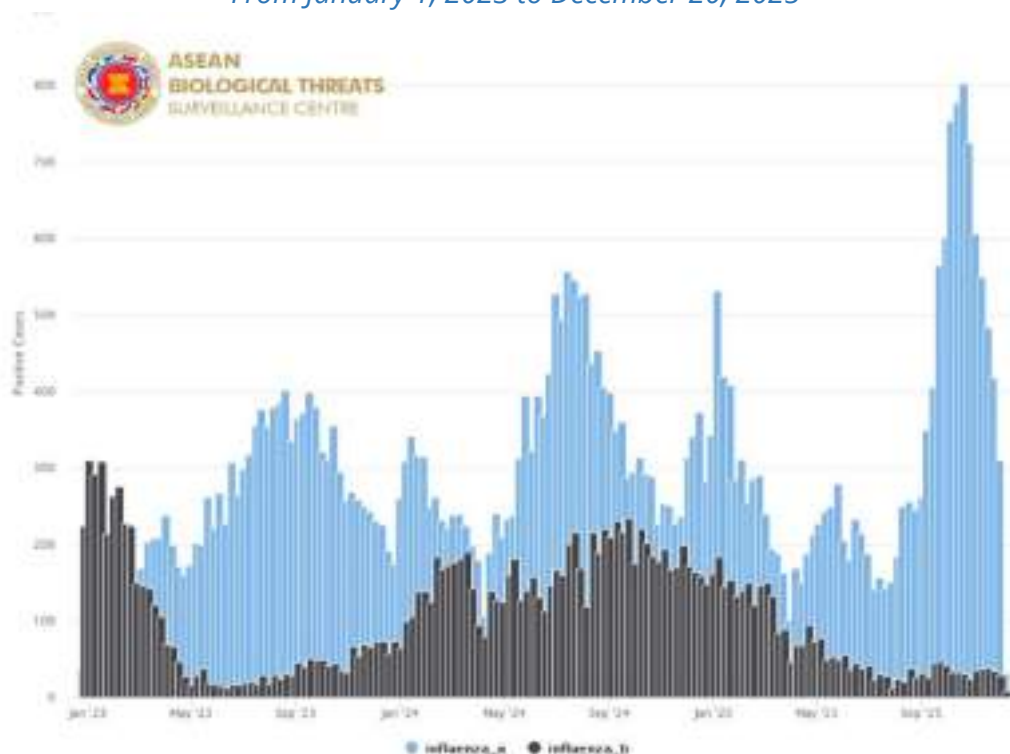
# INFLUENZA

## Key Findings

- Recently, most influenza cases among ASEAN Member States had decreased.
- Influenza-like illness (ILI) and severe acute respiratory infection (SARI) cases were increase among some ASEAN Member States.

## Trends of Influenza Confirmed Cases in the ASEAN region

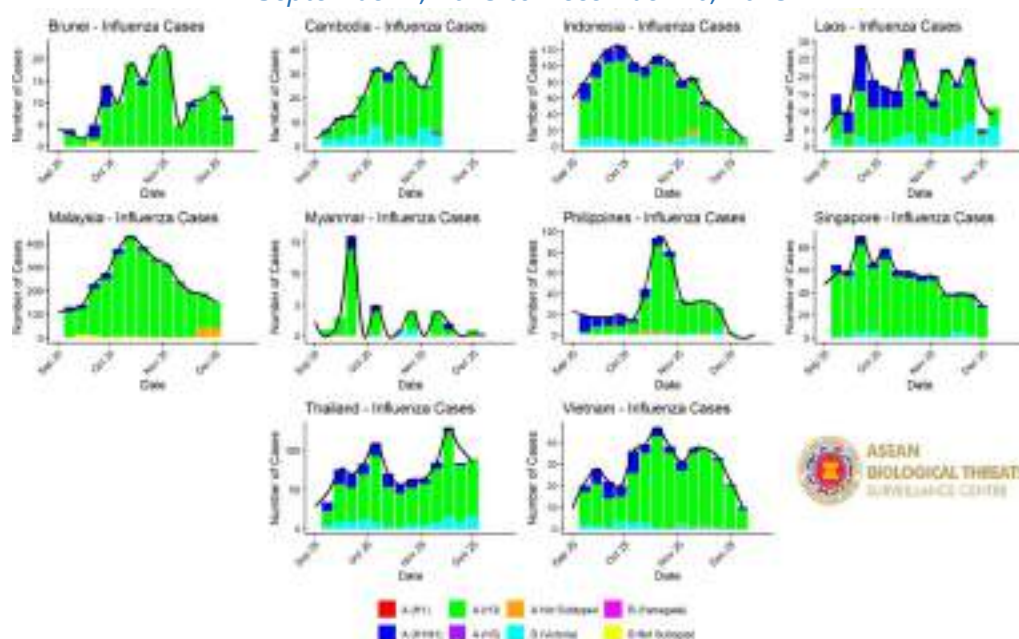
From January 1, 2023 to December 20, 2025



Source: WHO FluNet, accessed on December 23, 2025 (<https://www.who.int/tools/fluNet>)

## Trend of Influenza Cases among ASEAN Member States

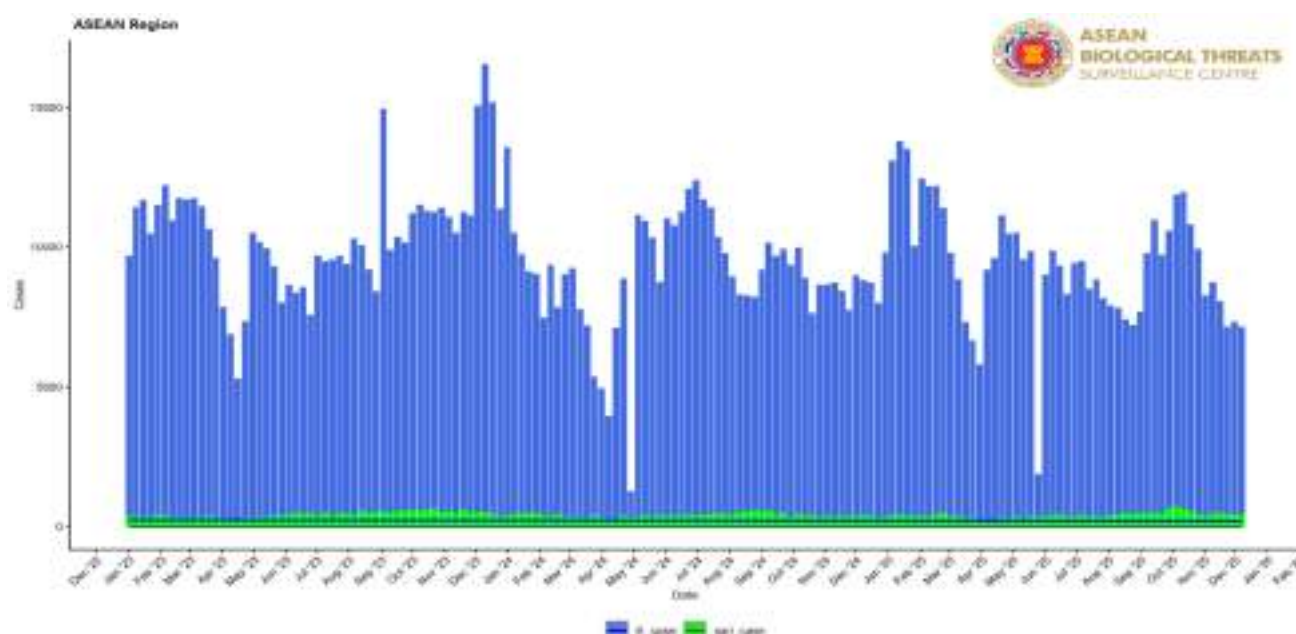
September 1, 2025 to December 20, 2025



Source: WHO FluNet, accessed on December 23, 2025 (<https://www.who.int/tools/fluNet>)

## Trend of Influenza-like Illness (ILI) and Severe Acute Respiratory Illness (SARI) in the ASEAN Region

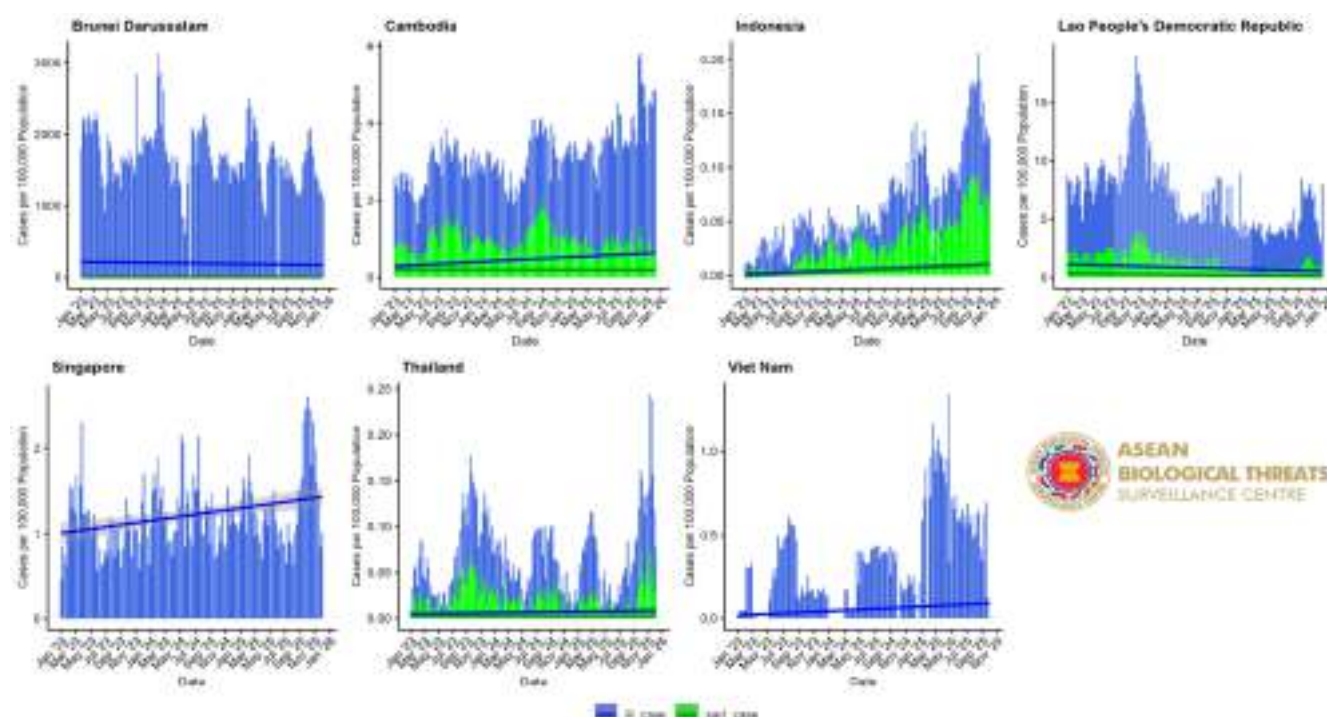
January 1, 2023 to December 20, 2025



Source: WHO FluID, accessed December 23, 2025 (<https://www.who.int/teams/global-influenza-programme/surveillance-and-monitoring/influenza-surveillance-outputs>)

## Trend of Influenza-like Illness (ILI) and Severe Acute Respiratory Illness (SARI) among ASEAN Member States

January 1, 2023 to December 20, 2025



Source: WHO FluID, accessed December 23, 2025 (<https://www.who.int/teams/global-influenza-programme/surveillance-and-monitoring/influenza-surveillance-outputs>)



# Zoonosis



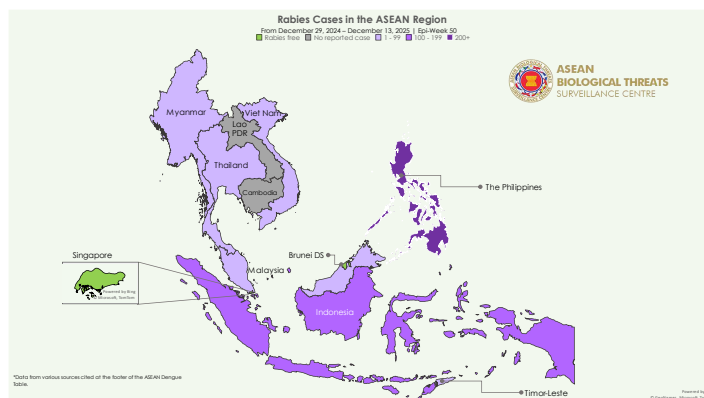
# RABIES

## Rabies Cases in the ASEAN Region

From December 29, 2024 to December 20, 2025 (Epi-Week 51, 2025)

### Key Findings

- Up to December 20, 2025, the region reported **564** total cases with **100%** CFR.



## Rabies cases (Human) in the ASEAN region

| Country                        | Epi-Week Reported | Cumulative Cases | New Cases Since Previous Report | Cumulative Deaths | CFR         |
|--------------------------------|-------------------|------------------|---------------------------------|-------------------|-------------|
| <b>Brunei Darussalam</b>       |                   |                  | <b>Rabies-free country</b>      |                   |             |
| <b>Cambodia</b>                | -                 | -                | -                               | -                 | -           |
| <b>Indonesia<sup>1</sup></b>   | Week 48           | 146              | -                               | 146               | 100%        |
| <b>Lao PDR</b>                 | -                 | -                | -                               | -                 | -           |
| <b>Malaysia<sup>2</sup></b>    | Week 44           | 6                | -                               | 6                 | 100%        |
| <b>Myanmar<sup>3</sup></b>     | Week 46           | 105              | -                               | 105               | 100%        |
| <b>Philippines<sup>2</sup></b> | Week 31           | 211              | -                               | 211               | 100%        |
| <b>Singapore</b>               |                   |                  | <b>Rabies-free country</b>      |                   |             |
| <b>Thailand<sup>2</sup></b>    | Week 29           | 7                | -                               | 7                 | 100%        |
| <b>Timor-Leste<sup>2</sup></b> | Week 45           | 21               | -                               | 21                | 100%        |
| <b>Viet Nam<sup>2</sup></b>    | Week 50           | 68               | -                               | 68                | 100%        |
| <b>Total</b>                   |                   | <b>564</b>       | <b>0</b>                        | <b>564</b>        | <b>100%</b> |

Source:

- Ministry of Health, Republic of Indonesia
- Bluedot Platform, accessed December 23, 2025 (<https://portal.bluedot.global/>)
- Department of Public Health, Ministry of Health, Myanmar

## Rabies cases (Animal) in the ASEAN region

| Country                  | Epi-Week Reported | Cumulative Cases | New Cases Since Previous Report | Cumulative Deaths | CFR         |
|--------------------------|-------------------|------------------|---------------------------------|-------------------|-------------|
| <b>Brunei Darussalam</b> |                   |                  | <b>Rabies-free country</b>      |                   |             |
| <b>Cambodia</b>          | Week 11           | 1                | -                               | 1                 | 100%        |
| <b>Indonesia</b>         | -                 | -                | -                               | -                 | -           |
| <b>Lao PDR</b>           | -                 | -                | -                               | -                 | -           |
| <b>Malaysia</b>          | Week 45           | 48               | -                               | 48                | 100%        |
| <b>Myanmar</b>           | Week 30           | 2                | -                               | 2                 | 100%        |
| <b>Philippines</b>       | Week 43           | 32               | -                               | 32                | 100%        |
| <b>Singapore</b>         |                   |                  | <b>Rabies-free country</b>      |                   |             |
| <b>Thailand</b>          | Week 50           | 252              | -                               | 252               | 100%        |
| <b>Timor-Leste</b>       | Week 47           | 50               | -                               | 50                | 100%        |
| <b>Viet Nam</b>          | -                 | -                | -                               | -                 | -           |
| <b>Total</b>             |                   | <b>385</b>       | <b>0</b>                        | <b>385</b>        | <b>100%</b> |

Source: World Organization for Animal Health (WOAH), accessed December 23, 2025 (<https://wahis.woah.org/#/event-management>)

# Vector-Borne Diseases





# DENGUE

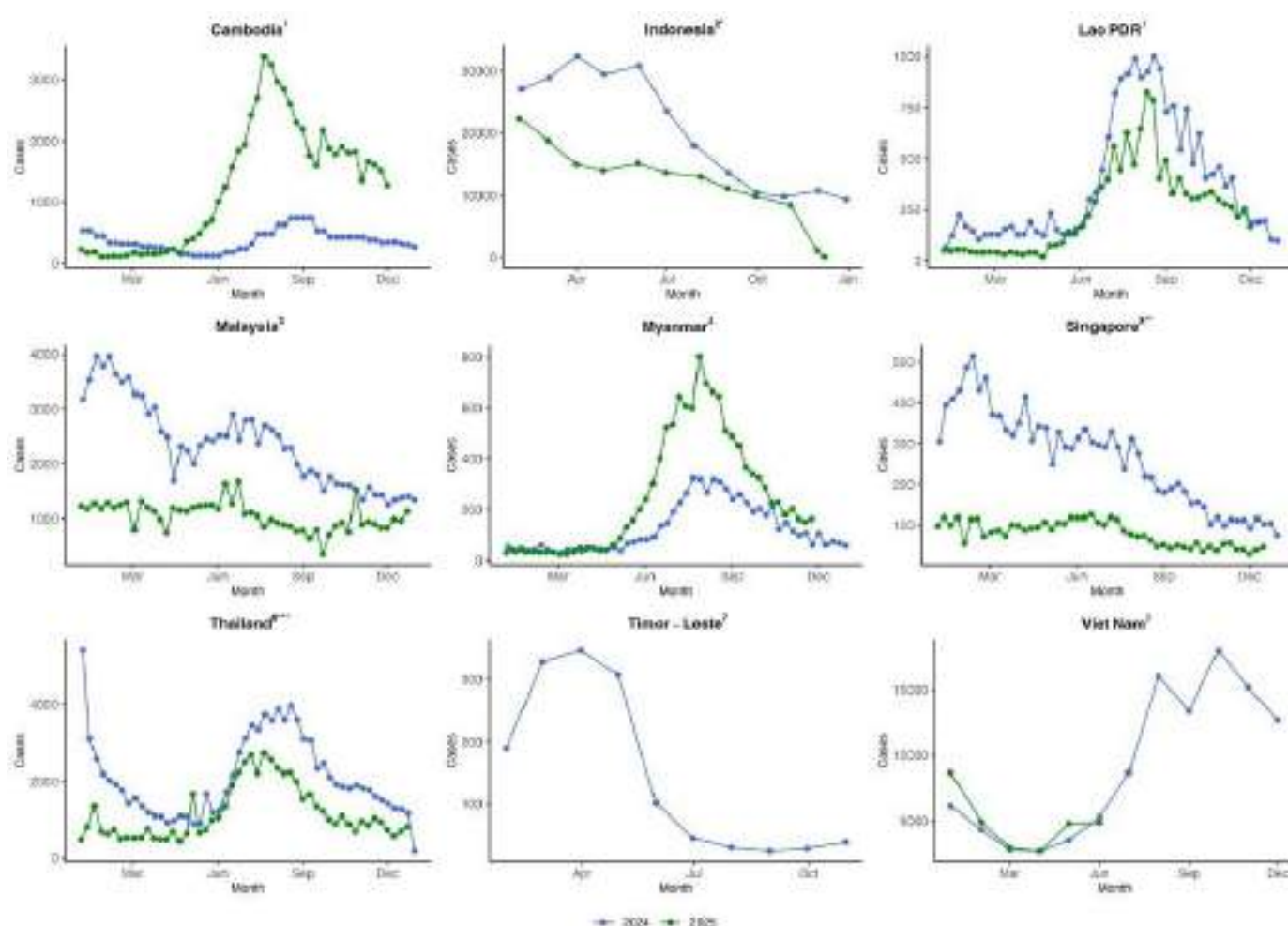
## Dengue Cases in the ASEAN Region

From December 29, 2024 to December 20, 2025 (Epi-Week 51, 2025)

### Key Findings

- The **ASEAN** region reported **9,078** new dengue cases in Epi-week 51, 2025.
- Up to December 20, 2025, the region reported **510,781** total cases and **842** total deaths with **0.16% CFR**.
- Most dengue trends in 2025 among AMS showing lower number of cases compared to previous year at the same period. At the first half of 2025, Cambodia and Myanmar showing significant increase of dengue cases compared to previous year at the same period, however currently showing downward in the second half of 2025.

### Trend of Dengue cases in the ASEAN region, 2024 - 2025



Source:

- WHO WPRO, "Dengue," World Health Organization, accessed December 23, 2025 (<https://www.who.int/westernpacific/emergencies/surveillance/dengue>).
- WHO Global Dengue Surveillance, accessed December 23, 2025 ([https://worldhealthorg.shinyapps.io/dengue\\_global/](https://worldhealthorg.shinyapps.io/dengue_global/)).
- Portal Rasmi iDengue untuk Komuniti, accessed December 23, 2025 (<https://idengue.mysa.gov.my/>).
- Department of Public Health, Ministry of Health, Myanmar
- Ministry of Health. "Weekly Infectious Disease Bulletin", accessed December 23, 2025. (<https://www.moh.gov.sg/resources-statistics/infectious-disease-statistics/2025/weekly-infectious-diseases-bulletin>)
- Bureau of Epidemiology, Department of Disease Control, Ministry of Public Health Thailand, accessed December 23, 2025, ([https://dvis3.ddc.moph.go.th/v/DDC\\_CENTER\\_DOE/views/DDS2/sheet33?%3Aembed=y&%3AisGuestRedirectFromVizportal=y](https://dvis3.ddc.moph.go.th/v/DDC_CENTER_DOE/views/DDS2/sheet33?%3Aembed=y&%3AisGuestRedirectFromVizportal=y))
- London School of Hygiene and Tropical Medicine. "OpenDengue Database", accessed December 23, 2025 (<https://opendengue.org/data.html>)

- Data were updated and collected from official sources, which may have a 2-8 weeks delay in reporting. Data must be interpreted cautiously.

\*Notified dengue cases only includes severe cases Dengue Hemorrhagic fever (DHF) and Dengue Shock Syndrome (DSS)

\*\*Notified dengue cases only includes Dengue Fever (DF) and DHF

\*\*\*Notified dengue cases include all type of cases DF, DHF, and DSS

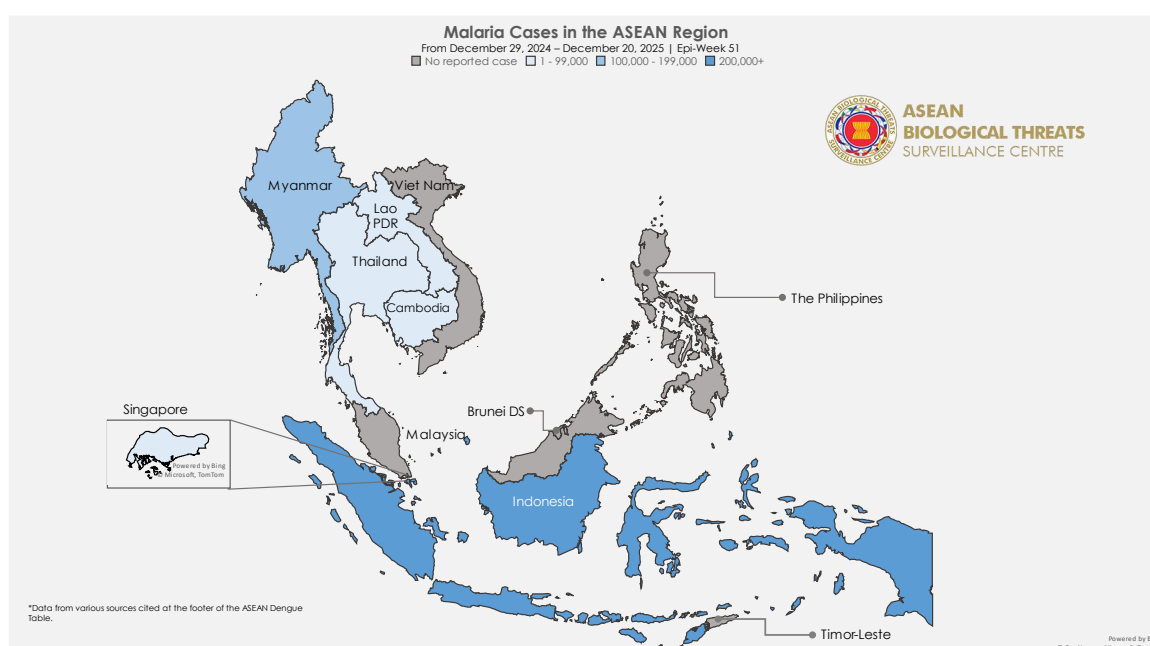
# MALARIA

## Malaria Cases in the ASEAN Region

From December 29, 2024 to December 20, 2025 (Epi-Week 51, 2025)

### Key Findings

- The **ASEAN** region reported **11,643** new malaria cases in Epi-week 51, 2025.
- Up to December 20, 2025, the region reported **815,876** total cases and **107** deaths with **0.01%** CFR.



## Malaria cases in the ASEAN region

| Country                      | Epi-Week Reported | Cumulative Cases | New Cases Since Last Week | Cumulative Deaths | CFR          |
|------------------------------|-------------------|------------------|---------------------------|-------------------|--------------|
| <b>Brunei Darussalam</b>     | -                 | -                | -                         | -                 | -            |
| <b>Cambodia<sup>1</sup></b>  | Week 51           | 106              | 0                         | 0                 | 0.00%        |
| <b>Indonesia<sup>2</sup></b> | Week 51           | 674,939          | 11,607                    | 99                | 0.02%        |
| <b>Lao PDR</b>               | -                 | -                | -                         | -                 | -            |
| <b>Malaysia</b>              | -                 | -                | -                         | -                 | -            |
| <b>Myanmar<sup>3</sup></b>   | Week 44           | 136,901          | -                         | 5                 | 0.004%       |
| <b>Philippines</b>           | -                 | -                | -                         | -                 | -            |
| <b>Singapore<sup>4</sup></b> | Week 47           | 33               | 0                         | 0                 | 0.00%        |
| <b>Thailand<sup>5</sup></b>  | Week 51           | 3,897            | 36                        | 3                 | 0.08%        |
| <b>Timor-Leste</b>           | -                 | -                | -                         | -                 | -            |
| <b>Viet Nam</b>              | -                 | -                | -                         | -                 | -            |
| <b>Total</b>                 |                   | <b>815,876</b>   | <b>11,643</b>             | <b>107</b>        | <b>0.01%</b> |

Source:

- Cambodia National Malaria Center, accessed December 23, 2025 (<https://mis.cnm.gov.kh/Dashboard>)
- Malaria Cases in Indonesia, accessed December 23, 2025 (<https://malaria.kemkes.go.id/case>)
- Department of Public Health, Ministry of Health, Myanmar
- Ministry of Health Singapore, accessed December 23, 2025 (<https://www.moh.gov.sg/others/resources-and-statistics/infectious-disease-statistics-2025-weekly-infectious-diseases-bulletin>)
- Bureau of Epidemiology, Department of Disease Control, Ministry of Public Health Thailand, accessed December 23, 2025 ([https://dvis3.ddc.moph.go.th/t/DDC\\_CENTER\\_DOE/views/DDS2/sheet33?%3Aembed=y&%3AisGuestRedirectFromVizportal=y](https://dvis3.ddc.moph.go.th/t/DDC_CENTER_DOE/views/DDS2/sheet33?%3Aembed=y&%3AisGuestRedirectFromVizportal=y))

A close-up photograph of a person wearing a white lab coat, using a syringe to draw liquid from a small glass vial. The person's hands are visible, and the background is blurred. The text 'Vaccine- Preventable Diseases' is overlaid in large white letters on the left side of the image.

# Vaccine- Preventable Diseases



# MEASLES

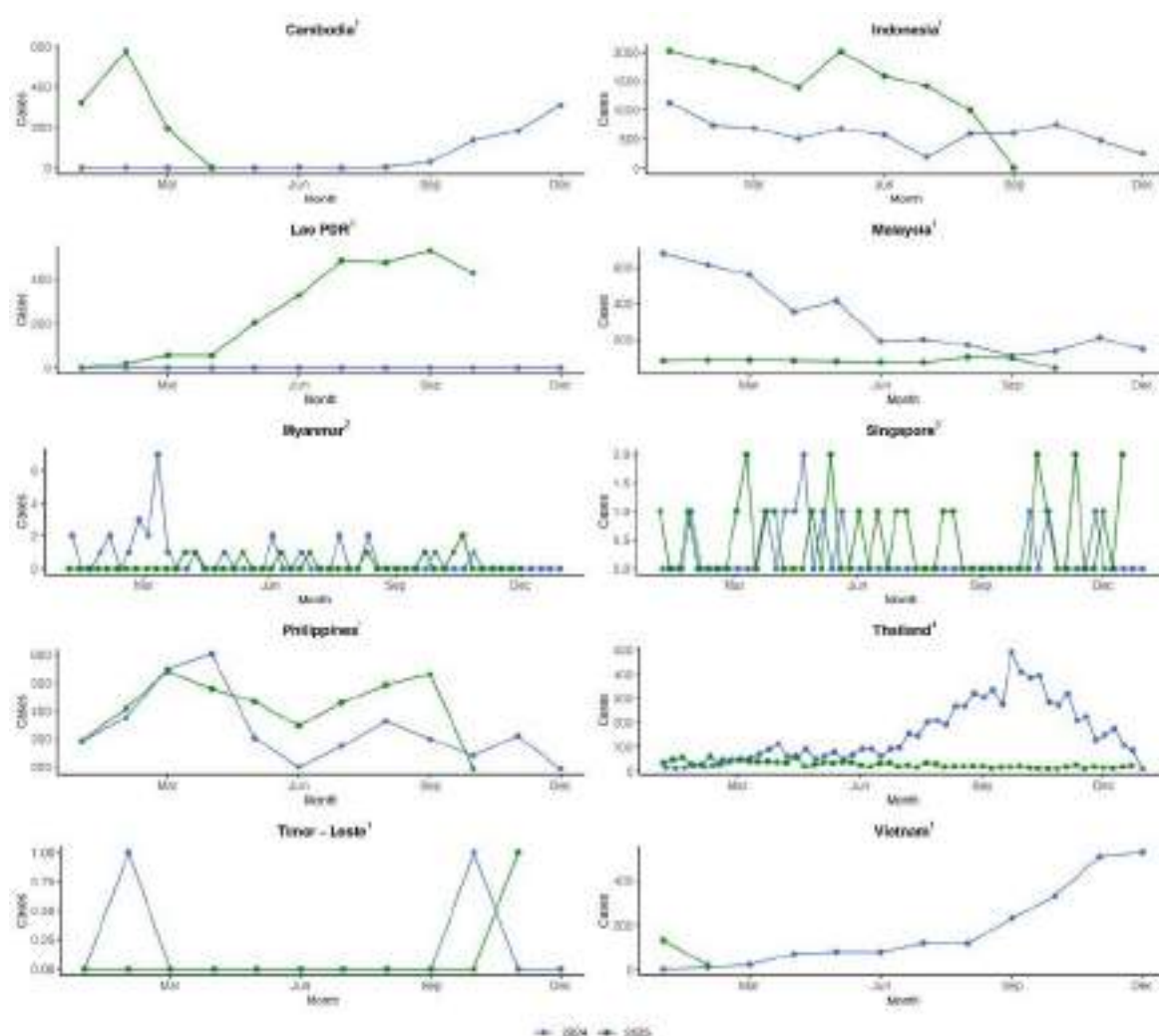
## Measles Cases in the ASEAN Region

From December 29, 2024 to December 20, 2025 (Epi-Week 51, 2025)

### Key Findings

- The **ASEAN** region reported **24** new measles cases in Epi-week 51, 2025.
- Up to December 20, 2025, the region reported **23,281** total cases with **0%** CFR.
- Mostly measles cases in the ASEAN Region slightly decrease compared to the same period on the previous year. Indonesia showing increased trend compared to previous year, then showing downward trend in September. The Philippines showing increased trend in the first half of 2025 compared to previous year, however currently showing downward..

### Trend of Measles cases in the ASEAN region, 2024 – 2025



Source:

- Provisional Measles and Rubella Data, World Health Organization, accessed December 23, 2025 (<https://immunizationdata.who.int/global?topic=Provisional-measles-and-rubella-data&location=>)
- Department of Public Health, Ministry of Health, Myanmar
- Ministry of Health Singapore, accessed December 23, 2025 (<https://www.moh.gov.sg/others/resources-and-statistics/infectious-disease-statistics-2025-weekly-infectious-diseases-bulletin>)
- Bureau of Epidemiology, Department of Disease Control, Ministry of Public Health Thailand, accessed December 23, 2025 (<http://doe.moph.go.th/surdata/index.php>)





**ASEAN  
BIOLOGICAL THREATS  
SURVEILLANCE CENTRE**

Support generated by  
**ASEAN BIOLOGICAL THREATS SURVEILLANCE CENTRE**

Email: [support@biothreats.org](mailto:support@biothreats.org)

Facebook: [abtc\\_official](#)

Instagram: [abtc\\_official](#)