



**ASEAN  
BIOLOGICAL THREATS  
SURVEILLANCE CENTRE**

**ABC  
BVC  
BWB  
A**

# **Morbidity and Mortality Weekly Report (MMWR)**

Infectious & Emerging Diseases  
in the ASEAN Region

With Support by:



Korea Disease Control and  
Prevention Agency



in partnership with  
Canada



Kemenkes



ASSOCIATION  
OF SOUTHEAST  
ASIAN NATIONS

This report aims to provide the current situation on infectious and emerging diseases in the ASEAN Region. We collate various information from multiple official sources and publicly available sources and is published every week on Wednesday. ABVC follows Epi-week calendar in its publication. For feedback and/or suggestions, please write to [support@aseanbiosurveillance.org](mailto:support@aseanbiosurveillance.org)

## Editorial

### ASEAN SECRETARIAT

Assistant Director and Head of Health Division  
Human Development Directorate

ASEAN Socio-Cultural Community Department

**Jennifer Frances dela Rosa, MPH, MSc HPPF**

Programme Coordinator (Health Security)

Mitigation of Biological Threats (MBT) Programme

**Michael Glen, MSSc**

### EDITORIAL TEAM

Editor-in-Chief

**Abdurrahman, MPH**

Managing Editor

**Aldilas Achmad Nursetyo, MD, MS**

Associate Editor

**Abdul Haris Ibrahim, MHI**

**Habibi Rohman Rosyad, MSc**

**Nindy Fadellah Wulan, MPH**

Copy Editor

**Ajeng Sekar Pratiwi, A.Md**

**Dwi Sasongko, A.Md.**

Supporting Staff

**Svetlana Pratiwi, SKM**

**Divva Kaamila, S.Tr.Kom**

**Natasha Alicia Putri, S.Tr.Kom**

### PUBLISHER

ASEAN Biological Threat Surveillance Centre

Health Policy Agency

Ministry of Health of Indonesia

Jl. Percetakan Negara No. 29 Johar Baru, Central Jakarta, Indonesia 10560

**E-mail:** [support@aseanbiosurveillance.org](mailto:support@aseanbiosurveillance.org)

**Facebook:** <https://www.facebook.com/abvc.official/>

**Instagram:** <https://www.instagram.com/abvc.official/>

## Table of Contents

|   |           |
|---|-----------|
| <b>Emerging Diseases</b> .....            | <b>2</b>  |
| Mpox.....                                 | 3         |
| COVID-19.....                             | 7         |
| Influenza .....                           | 9         |
| Avian Influenza (H5N1).....               | 11        |
| Hantavirus.....                           | 11        |
| Legionellosis .....                       | 11        |
| Meningococcal Disease .....               | 12        |
| Poliomyelitis .....                       | 12        |
| <b>Zoonosis</b> .....                     | <b>11</b> |
| Rabies .....                              | 12        |
| <b>Vector-borne Diseases</b> .....        | <b>13</b> |
| Dengue .....                              | 14        |
| Malaria.....                              | 15        |
| <b>Vaccine-preventable Diseases</b> ..... | <b>16</b> |
| Measles .....                             | 17        |

A person wearing a full-body white protective suit, including a hood and a face mask with a filter. They are wearing black gloves and holding a black cylindrical object. The background is a blurred indoor setting, possibly a laboratory or hospital. The text "Emerging Diseases" is overlaid in white, bold, sans-serif font on the left side of the image.

# Emerging Diseases

# MPOX

## Mpox Cases Reported in the ASEAN Region

January 1, 2025 – May 16, 2026



Source:

1. Ministry of Health Cambodia
2. Ministry of Health Republic of Indonesia (<https://infeksiemerging.kemkes.go.id>)
3. WHO Mpox Outbreak: Global Trends, accessed May 19, 2026 ([https://worldhealthorg.shinyapps.io/mpx\\_global/](https://worldhealthorg.shinyapps.io/mpx_global/))
4. Communicable Disease Agency, Ministry of Health Singapore, accessed May 19, 2026, <https://www.cda.gov.sg/resources/weekly-infectious-diseases-bulletin-2025/>

### Key Findings

- The number of Mpox cases from January 1 to May 16, 2026, are **52 cases** with **two deaths**.
- There were **no new cases of Mpox** in epi-week 19 of 2026.
- **60,281 confirmed cases** of mpox have been reported in **other regions** (other than the **ASEAN** region):

### Mpox cases in the ASEAN region in 2025 and 2026 (as of 16 May, 2026)

| ASEAN Member States            | Cumulative Cases in 2025 | Cumulative Deaths in 2025 (CFR) | Cumulative Cases in 2026 | New Cases in epi-week 19 | Cumulative Deaths in 2026 (CFR) |
|--------------------------------|--------------------------|---------------------------------|--------------------------|--------------------------|---------------------------------|
| <b>Cambodia<sup>1</sup></b>    | 0                        | 0 (0.00%)                       | 0                        | 0                        | 0 (0.00%)                       |
| <b>Indonesia<sup>2</sup></b>   | 0                        | 0 (0.00%)                       | 0                        | 0                        | 0 (0.00%)                       |
| <b>Lao PDR<sup>3</sup></b>     | 0                        | 0 (0.00%)                       | 0                        | 0                        | 0 (0.00%)                       |
| <b>Malaysia<sup>3</sup></b>    | 14                       | 0 (0.00%)                       | 4                        | 0                        | 0 (0.00%)                       |
| <b>Philippines<sup>3</sup></b> | 286                      | 6 (2.10%)                       | 0                        | 0                        | 0 (0.00%)                       |
| <b>Singapore<sup>4</sup></b>   | 23                       | 0 (0.00%)                       | 14                       | 0                        | 0 (0.00%)                       |
| <b>Thailand<sup>3</sup></b>    | 157                      | 3 (1.91%)                       | 34                       | 0                        | 2 (5.88%)                       |
| <b>Vietnam<sup>3</sup></b>     | 2                        | 0 (0.00%)                       | 0                        | 0                        | 0 (0.00%)                       |
| <b>ASEAN Total</b>             | <b>482</b>               | <b>9 (1.87%)</b>                | <b>52</b>                | <b>0</b>                 | <b>2 (3.85%)</b>                |

Source:

1. Ministry of Health Cambodia
2. Ministry of Health Republic of Indonesia (<https://infeksiemerging.kemkes.go.id>)
3. WHO Mpox Outbreak: Global Trends, accessed May 19, 2026 ([https://worldhealthorg.shinyapps.io/mpx\\_global/](https://worldhealthorg.shinyapps.io/mpx_global/))
4. Communicable Disease Agency, Ministry of Health Singapore, accessed May 19, 2026, <https://www.cda.gov.sg/resources/weekly-infectious-diseases-bulletin-2025/>

## Top 5 countries with the most mpox cases globally (Jan. 1, 2025 to May. 16, 2026)

| Country                             | Cumulative Cases | New Cases Since Previous Report | Cumulative Deaths | CFR   |
|-------------------------------------|------------------|---------------------------------|-------------------|-------|
| <b>Democratic Republic of Congo</b> | 24,221           | 0                               | 51                | 0.21% |
| <b>Uganda</b>                       | 7,160            | 0                               | 39                | 0.54% |
| <b>Sierra Leone</b>                 | 5,442            | 0                               | 60                | 1.10% |
| <b>United States of America</b>     | 2,938            | 0                               | 0                 | 0.00% |
| <b>Guinea</b>                       | 2,287            | 0                               | 7                 | 0.31% |

Source: WHO Mpox Outbreak: Global Trends, accessed May 19, 2026 ([https://worldhealthorg.shinyapps.io/mpx\\_global/](https://worldhealthorg.shinyapps.io/mpx_global/))

## Mpox cases per region (Jan. 1, 2025 to May. 16, 2026)

| REGIONS                               | CUMULATIVE CASES 2025-2026 | NEW CASES SINCE THE PREVIOUS REPORT | CUMULATIVE DEATHS | CFR          |
|---------------------------------------|----------------------------|-------------------------------------|-------------------|--------------|
| <b>AFRICA<sup>1</sup></b>             | 48.034                     | -                                   | 218               | 0,45%        |
| <b>AMERICAS<sup>1</sup></b>           | 6.584                      | -                                   | 10                | 0,15%        |
| <b>ASEAN<sup>1</sup></b>              | 533                        | -                                   | 11                | 2,06%        |
| <b>ASIA &amp; OCEANIA<sup>2</sup></b> | 2.170                      | -                                   | -                 | 0,00%        |
| <b>EUROPE<sup>1</sup></b>             | 3.493                      | -                                   | 1                 | 0,03%        |
| <b>TOTAL</b>                          | <b>60.814</b>              | -                                   | <b>239</b>        | <b>0,40%</b> |

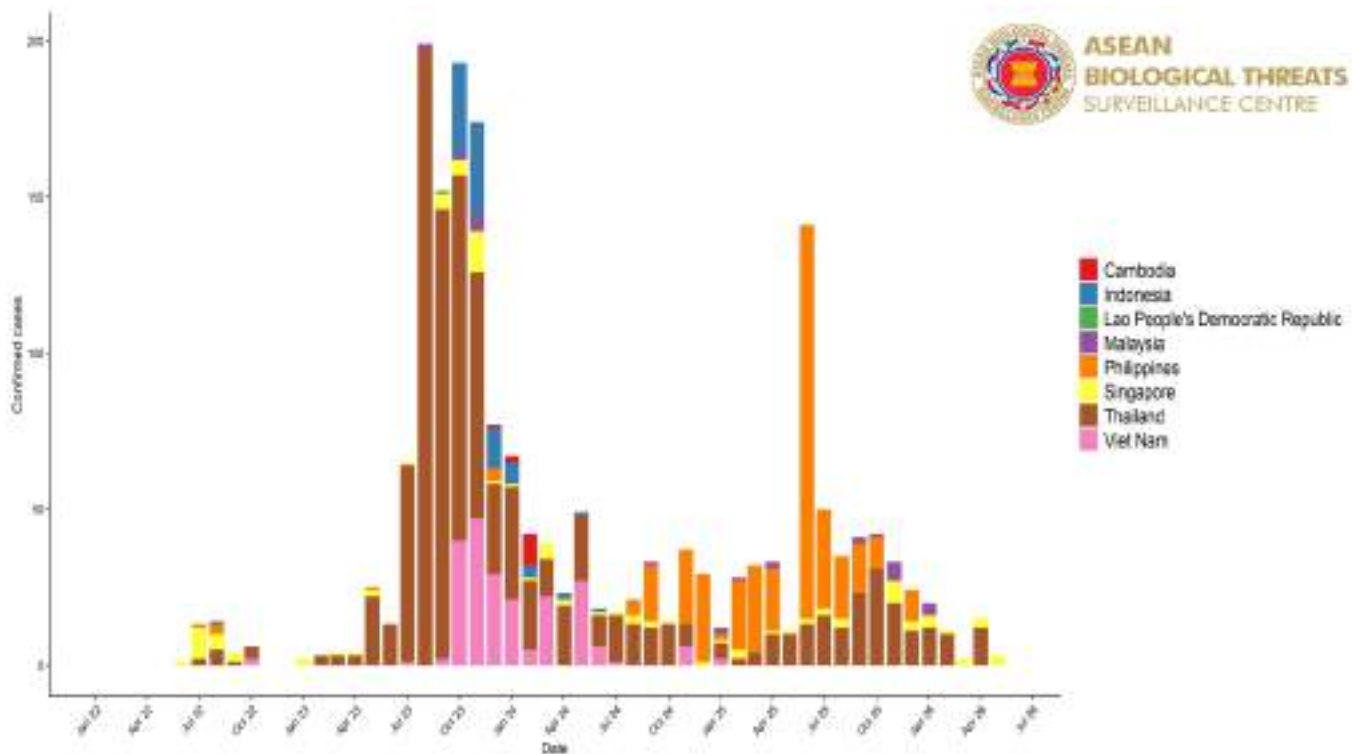
Source:

1. WHO Mpox Outbreak: Global Trends, accessed May 19, 2026 ([https://worldhealthorg.shinyapps.io/mpx\\_global/](https://worldhealthorg.shinyapps.io/mpx_global/))

2. Our World in Data, accessed May 19, 2026 (<https://ourworldindata.org/mpox>)

## Trend of Mpox Confirmed Cases in the ASEAN Region

January 1, 2022 to May 16, 2026



Source:

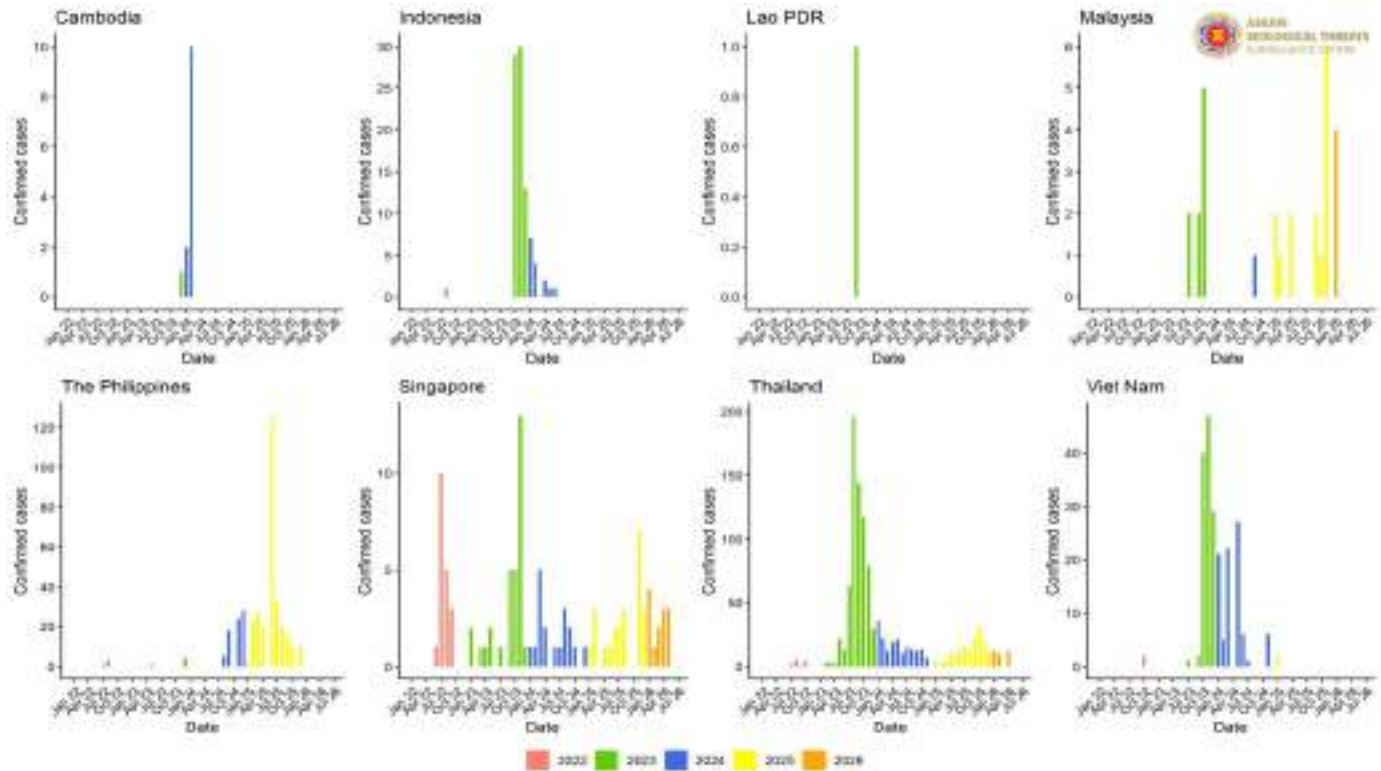
1. Ministry of Health Cambodia

2. Ministry of Health Republic of Indonesia (<https://infeksiemerging.kemkes.go.id>)

3. WHO Mpox Outbreak: Global Trends, accessed May 19, 2026 ([https://worldhealthorg.shinyapps.io/mpx\\_global/](https://worldhealthorg.shinyapps.io/mpx_global/))

4. Communicable Disease Agency, Ministry of Health Singapore, accessed May 19, 2026, <https://www.cda.gov.sg/resources/weekly-infectious-diseases-bulletin-2025/>

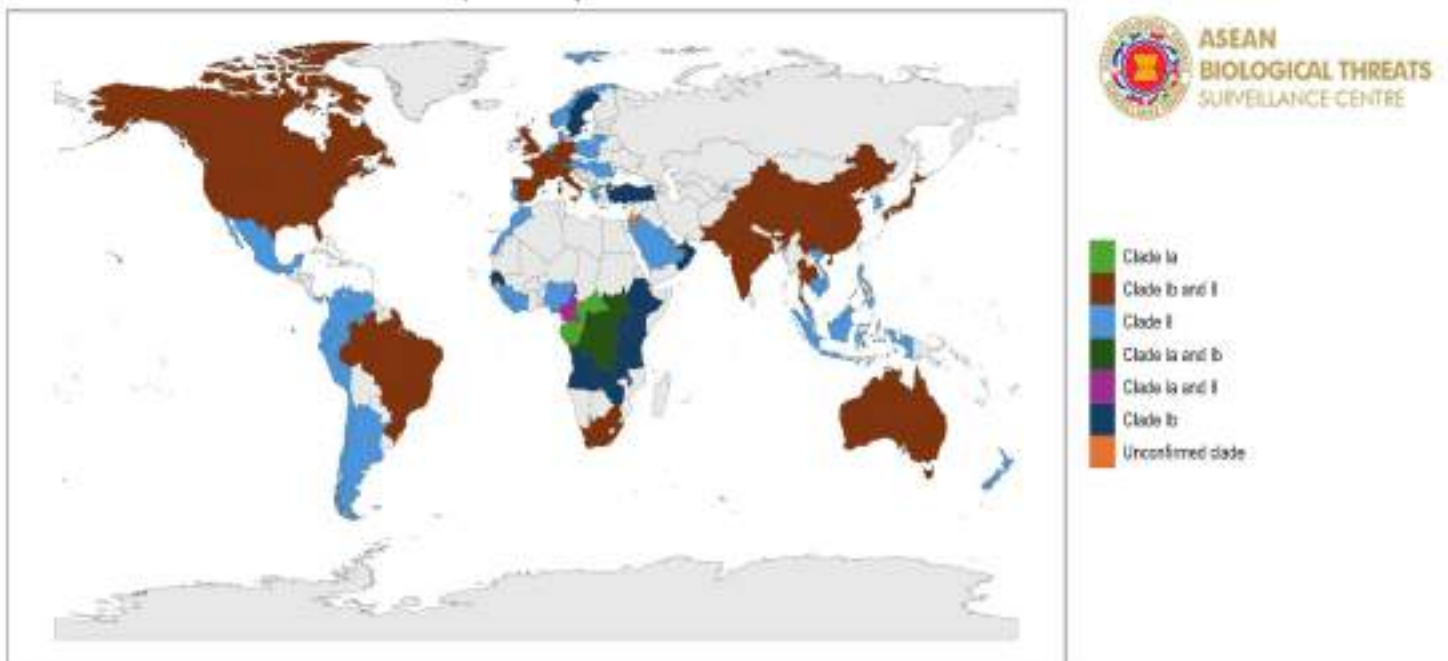
## Trend of Mpox Confirmed Cases among ASEAN Member States January 1, 2022 to May 16, 2026



Source:

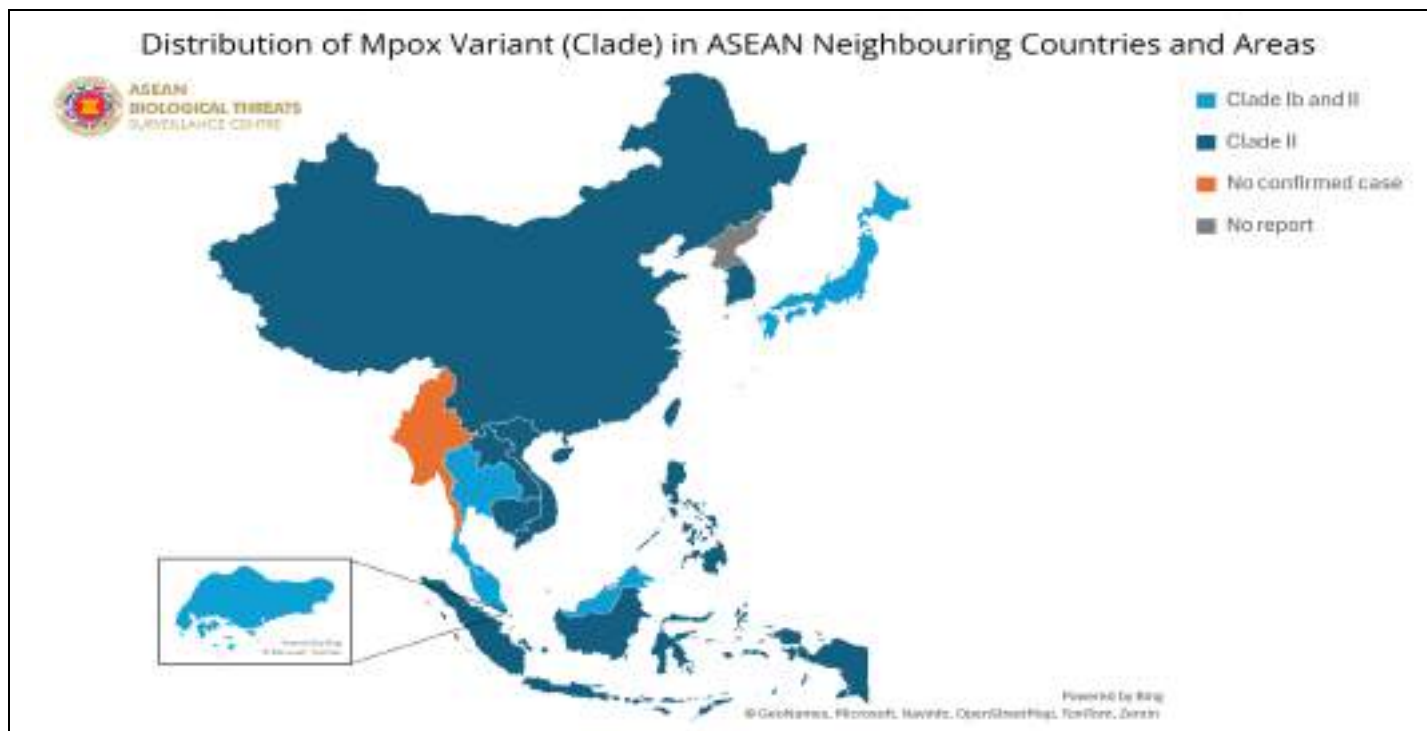
1. Ministry of Health Cambodia
2. Ministry of Health Republic of Indonesia (<https://infeksiemerging.kemkes.go.id>)
3. WHO Mpox Outbreak: Global Trends, accessed May 19, 2026 ([https://worldhealthorg.shinyapps.io/mpx\\_global/](https://worldhealthorg.shinyapps.io/mpx_global/))
4. Communicable Disease Agency, Ministry of Health Singapore, accessed May 19, 2026, <https://www.cda.gov.sg/resources/weekly-infectious-diseases-bulletin-2025/>

## Distribution of Mpox Variants in The Global As of May 16, 2026



Source: GISAID and WHO

## Distribution of Mpox Variants in the ASEAN and Neighbouring Countries and Areas As of May 16, 2026



Source:

1. Ministry of Health Cambodia
2. Ministry of Health Republic of Indonesia (<https://infeksiemerging.kemkes.go.id>)
3. WHO Mpox Outbreak: Global Trends, accessed May 19, 2026 ([https://worldhealthorg.shinyapps.io/mpx\\_global/](https://worldhealthorg.shinyapps.io/mpx_global/))
4. Communicable Disease Agency, Ministry of Health Singapore, accessed May 19, 2026, <https://www.cda.gov.sg/resources/weekly-infectious-diseases-bulletin-2025/>

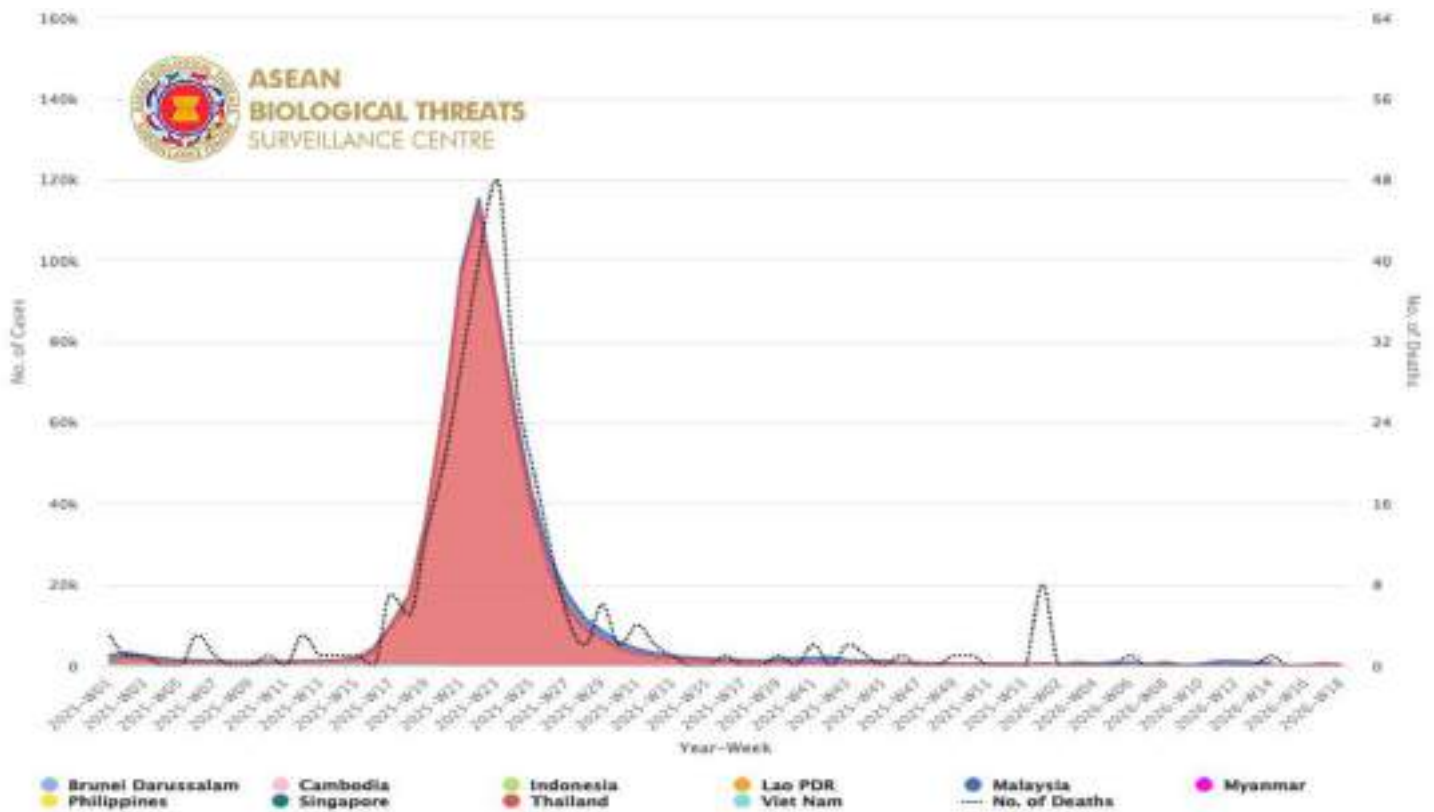
# COVID-19

## Key Findings

- Recently, the number of **confirmed COVID-19 cases reported to ASEAN are declining** compared to the previous year.
- The number of confirmed COVID-19 cases reported from 1 January 2026 to 16 May 2026 are **13,121 cases** with **0.08 % Case Fatality rate (CFR)**
- In April 2026, this week continues to show a stable **Omicron-only** landscape across ASEAN, with no new variant of concern detected. **JN.1** and its monitored descendants (including **LP.8.1**, **NB.1.8.1**, **KP.3**, **XEC** and **XFG**) remain predominant in Indonesia, the Philippines, Laos, Singapore, Thailand and Vietnam, while Brunei is still largely driven by earlier **BA.\*** lineages and Myanmar by **XBB.1.16** and related **XBB** lineages, indicating heterogeneous but overall stable variant patterns in the region.

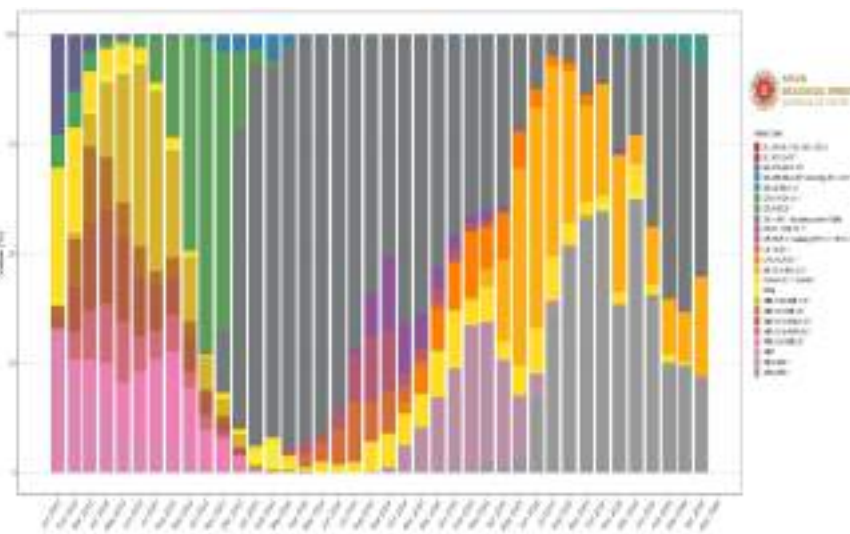
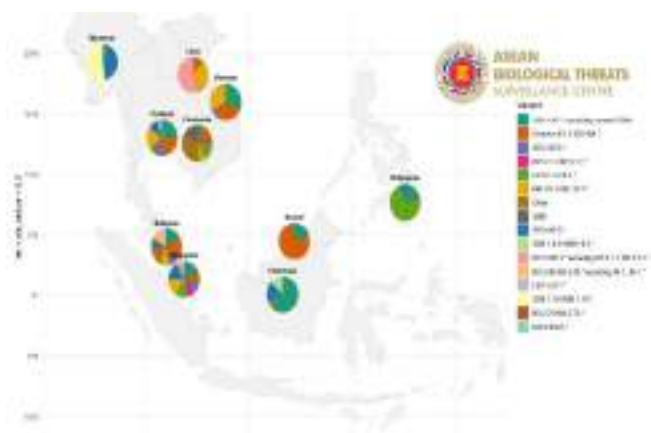
## ASEAN Weekly COVID-19 Cases and Deaths

From January 1, 2025 to May 16, 2026



Sources: [Singapore Government](#), [MOH Indonesia](#), [MOH Cambodia](#), [DDC Thailand](#), [MOH Myanmar](#), [MOH Malaysia](#), and [WHO](#) accessed on May 19, 2026

## COVID-19 Variants Frequencies Among the ASEAN Member States As of April 2026



Source: GISAIID. "hCoV-19 Variants Dashboard," accessed May 19, 2026, <https://gisaid.org/hcov-19-variants-dashboard/>.

### COVID-19 Variants Frequencies in the ASEAN Region

From January 2023 to April 2026

| Country     | JN.1+JN.1.* | Omicron B.1.1.529+BA.* | XEC+XEC.* | KP.3.1.1+KP.3.1.1.* | LP.8.1+LP.8.1.* | NB.1.8.1+NB.1.8.1.* | Other |
|-------------|-------------|------------------------|-----------|---------------------|-----------------|---------------------|-------|
| Brunei      | 19.71       | 77.31                  | 2.98      | 0.00                | 0.00            | 0.00                | 0.00  |
| Cambodia    | 5.75        | 15.92                  | 0.34      | 2.64                | 16.91           | 6.80                | 35.47 |
| Indonesia   | 62.63       | 2.30                   | 0.00      | 0.00                | 0.00            | 1.70                | 0.00  |
| Laos        | 0.00        | 9.11                   | 1.03      | 0.00                | 0.93            | 32.65               | 0.00  |
| Malaysia    | 15.03       | 20.12                  | 7.45      | 2.02                | 2.14            | 9.51                | 18.24 |
| Myanmar     | 5.10        | 1.45                   | 0.00      | 0.00                | 0.00            | 0.46                | 0.00  |
| Philippines | 20.53       | 2.71                   | 0.00      | 0.00                | 71.61           | 0.00                | 0.00  |
| Singapore   | 17.13       | 12.45                  | 9.60      | 6.95                | 12.90           | 16.82               | 0.00  |
| Thailand    | 24.53       | 21.07                  | 11.30     | 2.56                | 6.03            | 18.53               | 0.00  |
| Vietnam     | 30.84       | 29.09                  | 7.23      | 0.00                | 0.00            | 32.84               | 0.00  |

Source: GISAIID. "hCoV-19 Variants Dashboard," accessed May 19, 2026, <https://gisaid.org/hcov-19-variants-dashboard/>.

From January 2023 to April 2026

| Country     | XBB*  | XFG+ XFG.* | XBB.1.9.2+X BB1.9.2.* | KP.3+KP.3.* | BA.2.86+ BA.2.86.* | LB.1+LB.1.* | XBB.1.16+ XBB.1.16.* | BA.2.75+BA.2.75.* |
|-------------|-------|------------|-----------------------|-------------|--------------------|-------------|----------------------|-------------------|
| Brunei      | 0.00  | 0.00       | 0.00                  | 0.00        | 0.00               | 0.00        | 0.00                 | 0.00              |
| Cambodia    | 15.82 | 0.36       | 0.00                  | 0.00        | 0.00               | 0.00        | 0.00                 | 0.00              |
| Indonesia   | 0.00  | 19.74      | 13.63                 | 0.00        | 0.00               | 0.00        | 0.00                 | 0.00              |
| Laos        | 0.00  | 0.70       | 0.00                  | 55.58       | 0.00               | 0.00        | 0.00                 | 0.00              |
| Malaysia    | 3.47  | 4.10       | 0.00                  | 4.91        | 9.54               | 3.47        | 0.00                 | 0.00              |
| Myanmar     | 0.00  | 40.90      | 0.00                  | 0.00        | 0.00               | 0.00        | 52.09                | 0.00              |
| Philippines | 0.00  | 5.15       | 0.00                  | 0.00        | 0.00               | 0.00        | 0.00                 | 0.00              |
| Singapore   | 0.00  | 16.20      | 0.00                  | 5.05        | 0.00               | 2.08        | 0.00                 | 0.42              |
| Thailand    | 0.00  | 10.86      | 0.00                  | 3.42        | 1.71               | 0.00        | 0.00                 | 0.00              |
| Vietnam     | 0.00  | 0.00       | 0.00                  | 0.00        | 0.00               | 0.00        | 0.00                 | 0.00              |

Source: GISAIID. "hCoV-19 Variants Dashboard," accessed May 19, 2026, <https://gisaid.org/hcov-19-variants-dashboard/>.

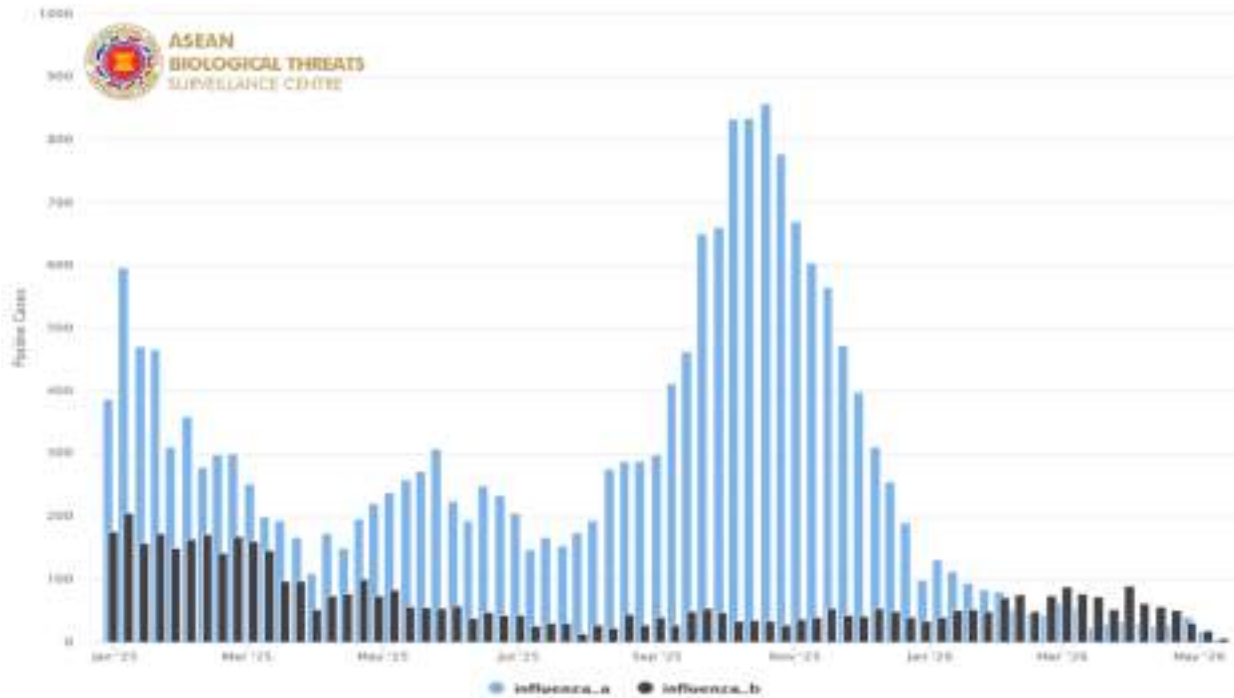
# INFLUENZA

## Key Findings

- Recently, most influenza cases among ASEAN Member States had decreased.
- Most of Influenza-like illness (ILI) and severe acute respiratory infection (SARI) cases were decrease among some ASEAN Member States.

## Trends of Influenza Confirmed Cases in the ASEAN region

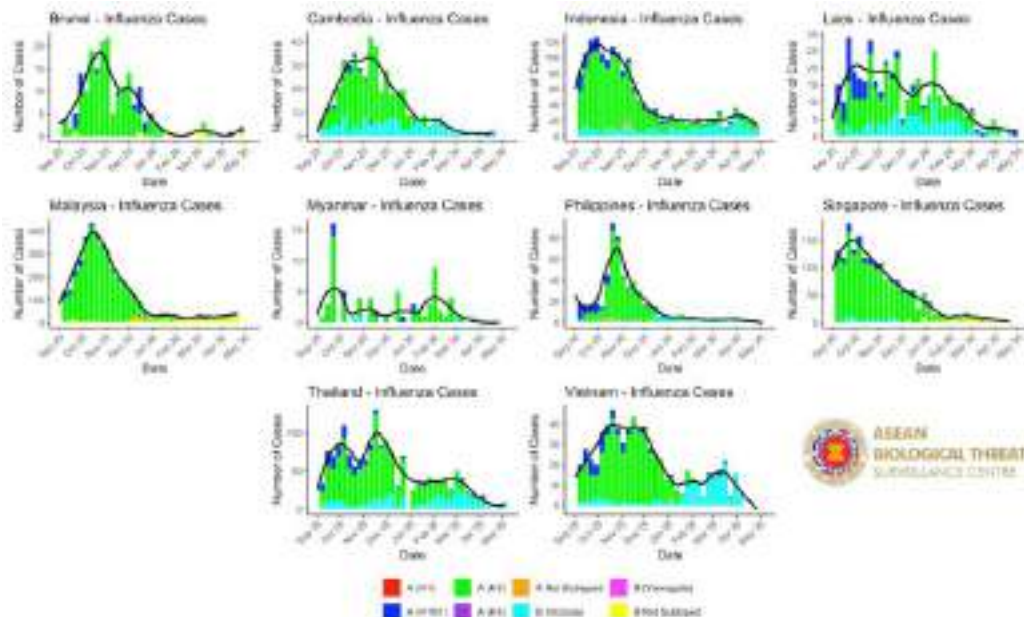
From January 1, 2025 to May 16, 2026



Source: WHO FluNet, accessed on May 19, 2026 (<https://www.who.int/tools/fluNet>)

## Trend of Influenza Cases among ASEAN Member States

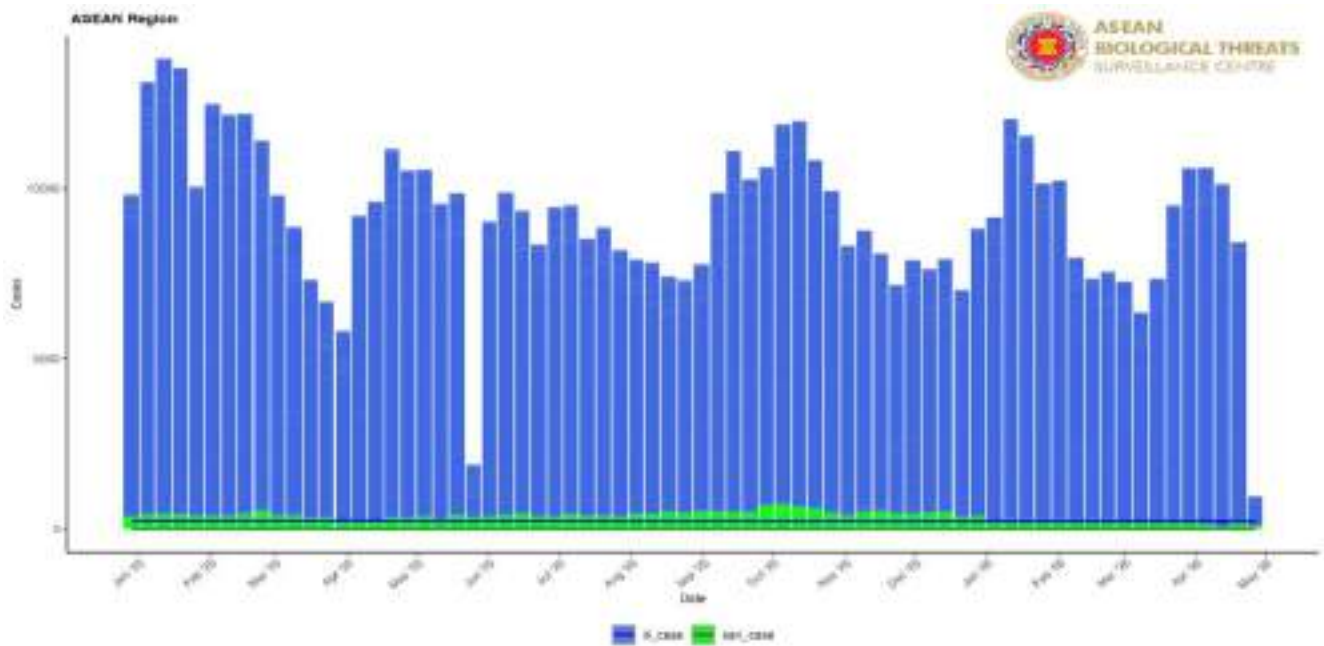
September 1, 2025 to May 16, 2026



Source: WHO FluNet, accessed on May 19, 2026 (<https://www.who.int/tools/fluNet>)

## Trend of Influenza-like Illness (ILI) and Severe Acute Respiratory Illness (SARI) in the ASEAN Region

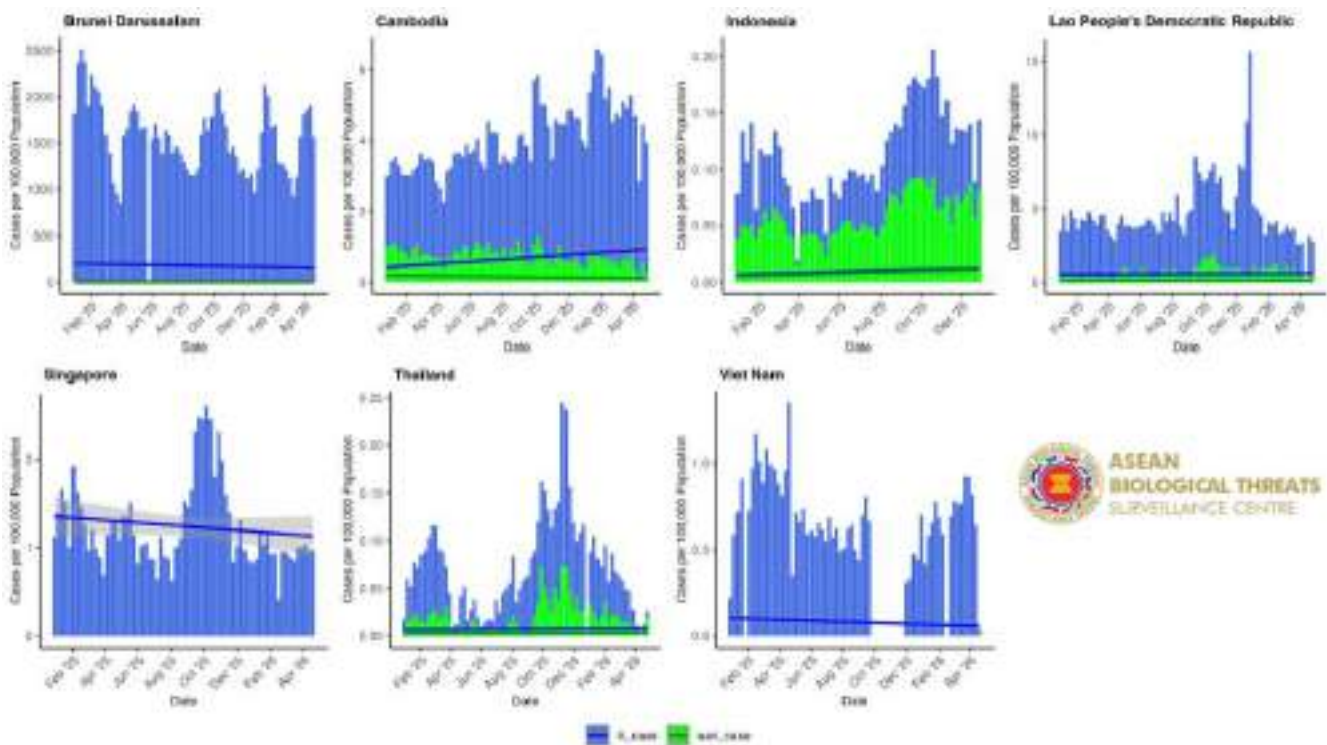
January 1, 2025 to May 16, 2026



Source: WHO FluID, accessed May 19, 2026 (<https://www.who.int/teams/global-influenza-programme/surveillance-and-monitoring/influenza-surveillance-outputs>)

## Trend of Influenza-like Illness (ILI) and Severe Acute Respiratory Illness (SARI) among ASEAN Member States

January 1, 2025 to May 16, 2026



Source: WHO FluID, accessed May 19, 2026 (<https://www.who.int/teams/global-influenza-programme/surveillance-and-monitoring/influenza-surveillance-outputs>)

## AVIAN INFLUENZA (H5N1)

### Key Findings

- In 2026, Avian Influenza (H5N1) is found in Cambodia. In Epi-week 19, there was no new case in the ASEAN region.

### Distribution of Avian Influenza (H5N1) cases in the ASEAN Region

| AMS             | Avian Influenza (H5N1) |                        |             |            |                  |                   |
|-----------------|------------------------|------------------------|-------------|------------|------------------|-------------------|
|                 | Cumulative Cases 2025  | Cumulative Deaths 2025 | Epi-week 19 |            | Period 2026      |                   |
|                 |                        |                        | New Cases   | New Deaths | Cumulative Cases | Cumulative Deaths |
| <b>Cambodia</b> | 18                     | 9                      | 0           | 0          | 4                | 1                 |
| <b>Viet Nam</b> | 1                      | 0                      | 0           | 0          | 0                | 0                 |
| <b>Total</b>    | 19                     | 9                      | 0           | 0          | 4                | 1                 |

Source: [WHO](#), [Ministry of Health of Cambodia](#).

## HANTAVIRUS

### Key Findings

- In 2026, hantavirus is found in Indonesia. In Epi-week 19, 2026, there was no new case of Hantavirus reported.

### Distribution of Hantavirus Cases in the ASEAN Region

| AMS              | Hantavirus            |                        |             |            |                  |                   |
|------------------|-----------------------|------------------------|-------------|------------|------------------|-------------------|
|                  | Cumulative Cases 2025 | Cumulative Deaths 2025 | Epi-week 19 |            | Period 2026      |                   |
|                  |                       |                        | New Cases   | New Deaths | Cumulative Cases | Cumulative Deaths |
| <b>Indonesia</b> | 18                    | 0                      | 0           | 0          | 5                | 0                 |
| <b>Total</b>     | 18                    | 0                      | 0           | 0          | 5                | 0                 |

Source: [MoH Indonesia](#)

## LEGIONELLOSIS

### Key Findings

- In 2026, the legionellosis is found in Singapore and Thailand. In Epi-week 19, there was one case of Legionellosis reported in the region.

### Distribution of Legionellosis Cases in the ASEAN Region

| AMS              | Legionellosis         |                        |             |            |                  |                   |
|------------------|-----------------------|------------------------|-------------|------------|------------------|-------------------|
|                  | Cumulative Cases 2025 | Cumulative Deaths 2025 | Epi-week 19 |            | Period 2026      |                   |
|                  |                       |                        | New Cases   | New Deaths | Cumulative Cases | Cumulative Deaths |
| <b>Indonesia</b> | 49                    | 2                      | 0           | 0          | 0                | 0                 |
| <b>Singapore</b> | 62                    | 0                      | 0           | 0          | 9                | 0                 |
| <b>Thailand</b>  | 24                    | 1                      | 1           | 0          | 11               | 0                 |
| <b>Total</b>     | 135                   | 3                      | 1           | 0          | 20               | 0                 |

Source: [MoH Indonesia](#), [MoH Singapore](#), [MoH Thailand](#)

## MENINGOCOCCAL DISEASE

### Key Findings

- In 2026, meningococcal disease is found in Indonesia, Singapore, Thailand, and Viet Nam. In Epi-week 19, 2026, there was one case of Meningococcal Disease reported among AMS.

### Distribution of Meningococcal Disease Cases in the ASEAN Region

| AMS              | Meningococcal Disease |                        |             |            |                  |                   |
|------------------|-----------------------|------------------------|-------------|------------|------------------|-------------------|
|                  | Cumulative Cases 2025 | Cumulative Deaths 2025 | Epi-week 19 |            | Period 2026      |                   |
|                  |                       |                        | New Cases   | New Deaths | Cumulative Cases | Cumulative Deaths |
| <b>Indonesia</b> | 0                     | 0                      | 0           | 0          | 1                | 1                 |
| <b>Singapore</b> | 7                     | 0                      | 0           | 0          | 2                | 0                 |
| <b>Thailand</b>  | 39                    | 5                      | 1           | 0          | 10               | 3                 |
| <b>Viet Nam</b>  | 95                    | 0                      | 0           | 0          | 1                | 0                 |
| <b>Total</b>     | 141                   | 5                      | 1           | 0          | 14               | 4                 |

Source: [WHO](#), [MoH Indonesia](#), [MoH Singapore](#), [MoH Thailand](#)

## POLIOMYELITIS

### Key Findings

- In 2026, Poliomyelitis has not been reported among AMS. In Epi-week 19, there was no new case of Poliomyelitis reported.

### Distribution of Poliomyelitis Cases in the ASEAN Region

| AMS              | Poliomyelitis         |                        |             |            |                  |                   |
|------------------|-----------------------|------------------------|-------------|------------|------------------|-------------------|
|                  | Cumulative Cases 2025 | Cumulative Deaths 2025 | Epi-week 19 |            | Period 2026      |                   |
|                  |                       |                        | New Cases   | New Deaths | Cumulative Cases | Cumulative Deaths |
| <b>Lao PDR</b>   | 1                     | 0                      | 0           | 0          | 0                | 0                 |
| <b>Singapore</b> | 1                     | 0                      | 0           | 0          | 0                | 0                 |
| <b>Total</b>     | 2                     | 0                      | 0           | 0          | 0                | 0                 |

Source: [WHO](#)

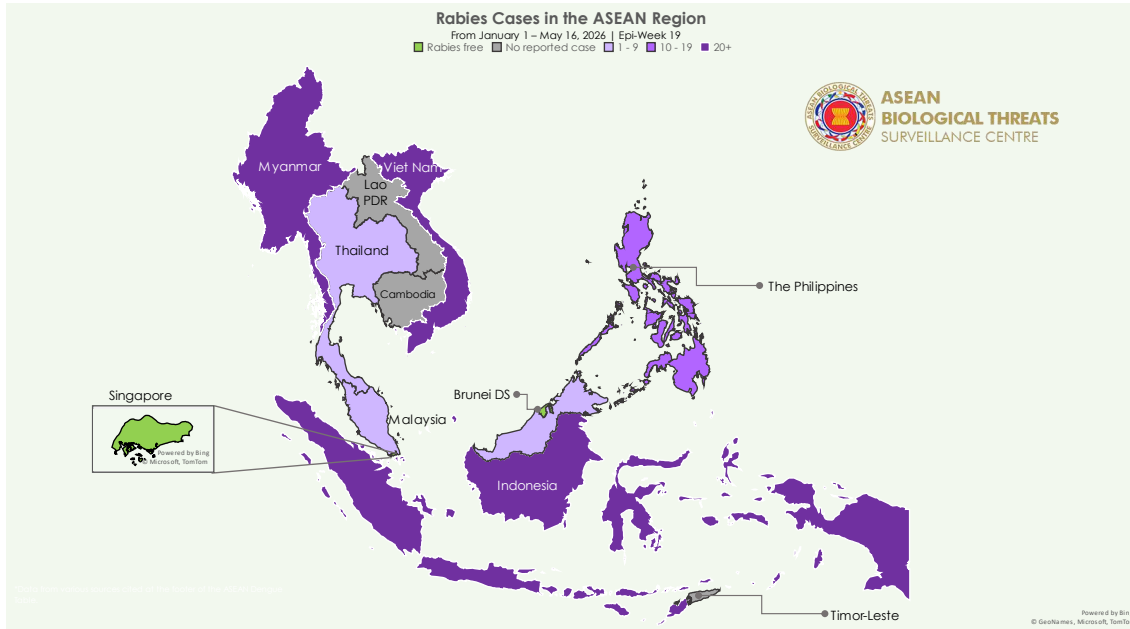
# Zoonosis



# RABIES

## Key Findings

- The **ASEAN** region reported **seven** new rabies cases in Epi-week 19, 2026.
- The total number of rabies cases from January 1 to May 16, 2026 are **118** cases with **100%** CFR.



## Rabies cases in the ASEAN region

| Country                        | Data as of | Cumulative Cases | New Cases Since Previous Report | Cumulative Deaths | CFR         |
|--------------------------------|------------|------------------|---------------------------------|-------------------|-------------|
| <b>Brunei Darussalam</b>       |            |                  |                                 |                   |             |
|                                |            |                  | <i>Rabies-free country</i>      |                   |             |
| <b>Cambodia</b>                | -          | -                | -                               | -                 | -           |
| <b>Indonesia<sup>1</sup></b>   | May 2      | 33               | -                               | 33                | 100%        |
| <b>Lao PDR</b>                 | -          | -                | -                               | -                 | -           |
| <b>Malaysia<sup>2</sup></b>    | May 9      | 4                | -                               | 4                 | 100%        |
| <b>Myanmar<sup>3</sup></b>     | May 16     | 40               | 5                               | 40                | 100%        |
| <b>Philippines<sup>2</sup></b> | April 4    | 17               | -                               | 17                | 100%        |
| <b>Singapore</b>               |            |                  |                                 |                   |             |
|                                |            |                  | <i>Rabies-free country</i>      |                   |             |
| <b>Thailand<sup>4</sup></b>    | May 16     | 4                | 2                               | 4                 | 100%        |
| <b>Timor-Leste</b>             | -          | -                | -                               | -                 | -           |
| <b>Viet Nam<sup>2</sup></b>    | May 9      | 20               | -                               | 20                | 100%        |
| <b>Total</b>                   |            | <b>118</b>       | <b>7</b>                        | <b>118</b>        | <b>100%</b> |

Source:

1. Ministry of Health, Republic of Indonesia
2. Bluedot Platform, accessed May 19, 2026 (<https://portal.bluedot.global/>)
3. Department of Public Health, Ministry of Health, Myanmar
4. Bureau of Epidemiology, Department of Disease Control, Ministry of Public Health Thailand, accessed May 19, 2026, ([https://dvis3.ddc.moph.go.th/DDC\\_CENTER\\_DOE/views/\\_Weekly/sheet137%3Aembed=y&%3AisGuestRedirectFromVizportal=y&%3Aorigin=card\\_share\\_link](https://dvis3.ddc.moph.go.th/DDC_CENTER_DOE/views/_Weekly/sheet137%3Aembed=y&%3AisGuestRedirectFromVizportal=y&%3Aorigin=card_share_link))

# Vector-Borne Diseases



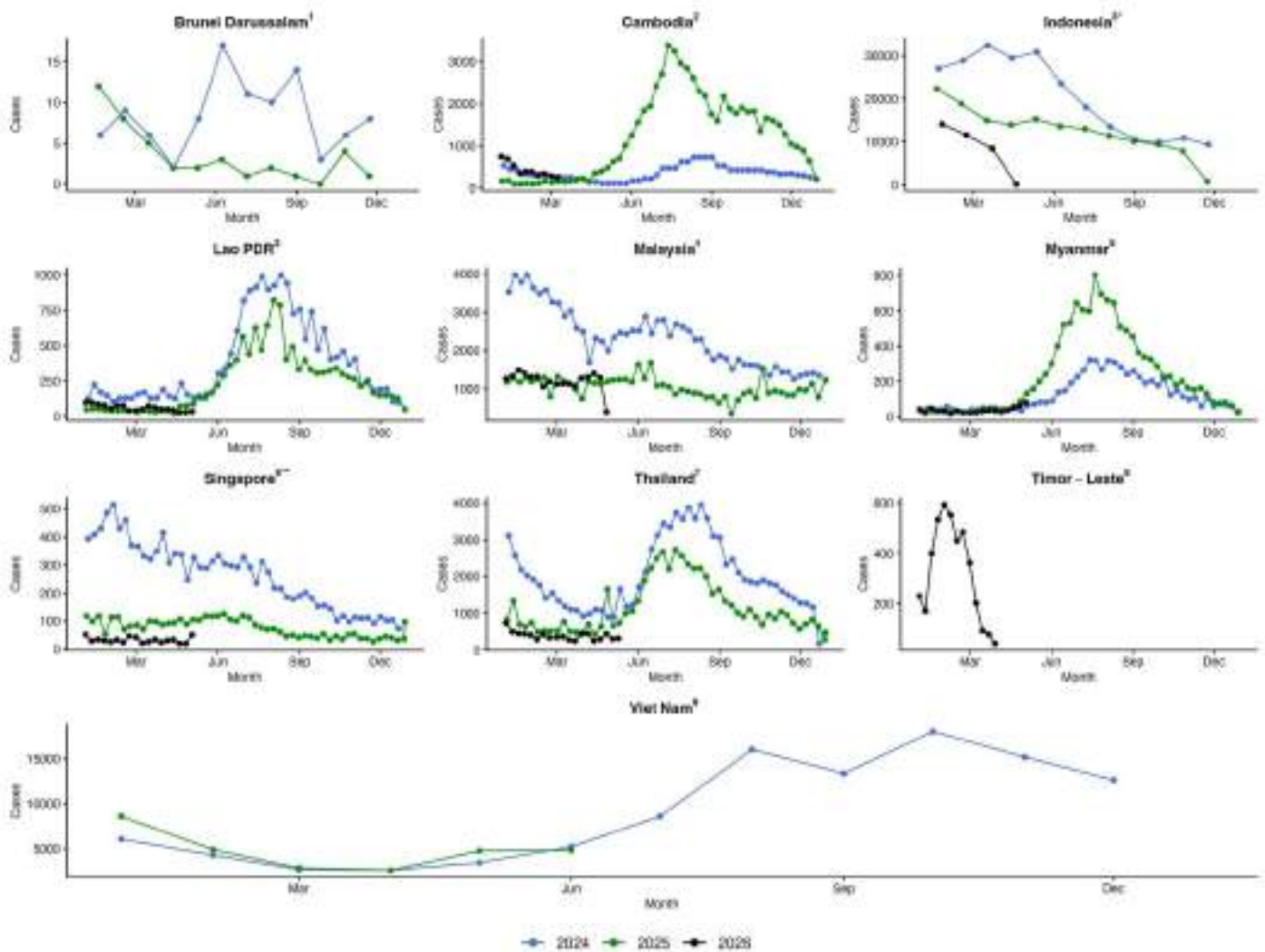
# DENGUE

## Key Findings

- The **ASEAN** region reported **4,679** new dengue cases in Epi-week 19, 2026.
- The total number of dengue cases from January 1 to May 16, 2026 are **94,860** cases and **102** deaths with **0.11% CFR**.

## Trend of Dengue cases in the ASEAN region, 2024 – 2026

Below are trend of dengue cases among ASEAN Member States since January 1, 2024 up to May 16, 2026.



Source:

1. Ministry of Health, Brunei Darussalam
2. WHO WPRO, "Dengue," World Health Organization, accessed May 19, 2026 (<https://www.who.int/westernpacific/emergencies/surveillance/dengue>).
3. Ministry of Health, Republic of Indonesia
4. Portal Rasmi iDengue untuk Komuniti, accessed May 19, 2026 (<https://idengue.mysa.gov.my/>)
5. Department of Public Health, Ministry of Health, Myanmar
6. Ministry of Health. "Weekly Infectious Disease Bulletin", accessed May 19, 2026 . (<https://www.moh.gov.sg/resources-statistics/infectious-disease-statistics/2025/weekly-infectious-diseases-bulletin>)
7. Bureau of Epidemiology, Department of Disease Control, Ministry of Public Health Thailand, accessed May 19, 2026 , ([https://dvis3.ddc.moph.go.th/t/DDC\\_CENTER\\_DOE/views/\\_Weekly/sheet13?%3Aembed=y&%3AisGuestRedirectFromVizportal=y&%3Aorigin=card\\_share\\_link](https://dvis3.ddc.moph.go.th/t/DDC_CENTER_DOE/views/_Weekly/sheet13?%3Aembed=y&%3AisGuestRedirectFromVizportal=y&%3Aorigin=card_share_link))
8. Ministry of Health, Timor-Leste
9. WHO Global Dengue Surveillance, accessed May 19, 2026 ([https://worldhealthorg.shinyapps.io/dengue\\_global/](https://worldhealthorg.shinyapps.io/dengue_global/))

- Data were updated and collected from official sources, which may have a 2-8 weeks delay in reporting. Data must be interpreted cautiously.

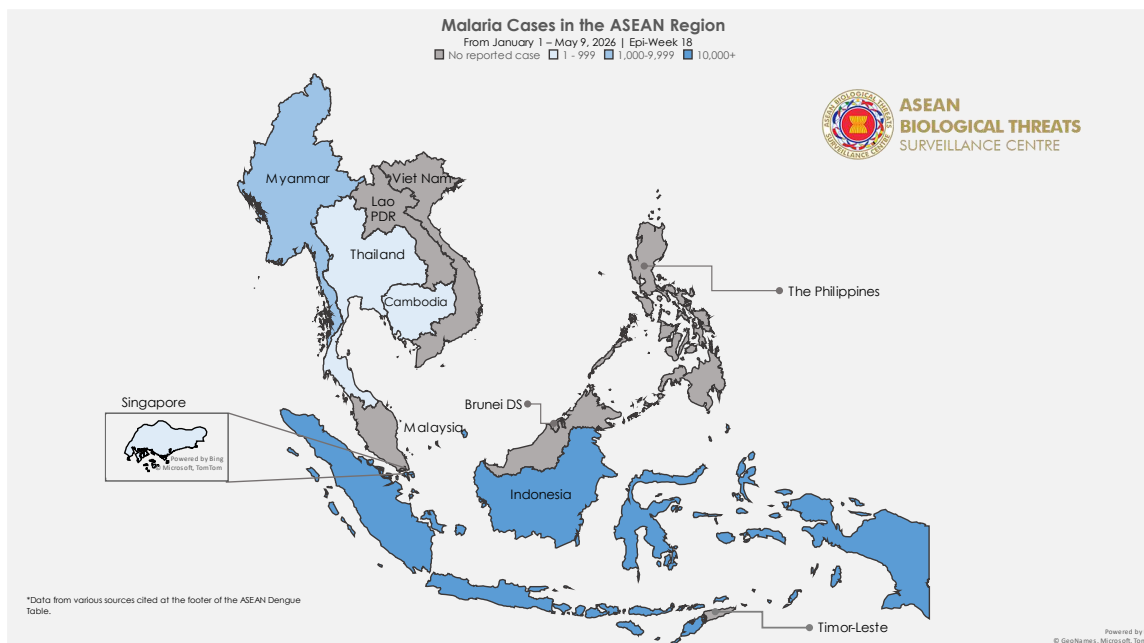
\*Notified dengue cases only includes severe cases Dengue Hemorrhagic fever (DHF) and Dengue Shock Syndrome (DSS)

\*\*Notified dengue cases only includes Dengue Fever (DF) and DHF

# MALARIA

## Key Findings

- The **ASEAN** region reported **14,406** new malaria cases in Epi-week 19, 2026.
- The total number of malaria cases from January 1 to May 16, 2026 are **238,768** cases and **206** deaths with **0.09%** CFR.



## Malaria cases in the ASEAN region

| Country                      | Data as of | Cumulative Cases | New Cases Since Last Week | Cumulative Deaths | CFR          |
|------------------------------|------------|------------------|---------------------------|-------------------|--------------|
| <b>Brunei Darussalam</b>     | -          | -                | -                         | -                 | -            |
| <b>Cambodia<sup>1</sup></b>  | May 16     | 6                | 0                         | 0                 | 0.00%        |
| <b>Indonesia<sup>2</sup></b> | May 16     | 212,164          | 14,259                    | 142               | 0.10%        |
| <b>Lao PDR</b>               | -          | -                | -                         | -                 | -            |
| <b>Malaysia</b>              | -          | -                | -                         | -                 | -            |
| <b>Myanmar<sup>3</sup></b>   | March 31   | 25,252           | -                         | 0                 | 0.00%        |
| <b>Philippines</b>           | -          | -                | -                         | -                 | -            |
| <b>Singapore<sup>4</sup></b> | May 9      | 7                | 1                         | 0                 | 0.00%        |
| <b>Thailand<sup>5</sup></b>  | May 16     | 1,339            | 146                       | 1                 | 0.17%        |
| <b>Timor-Leste</b>           | -          | -                | -                         | -                 | -            |
| <b>Viet Nam</b>              | -          | -                | -                         | -                 | -            |
| <b>Total</b>                 |            | <b>238,768</b>   | <b>14,406</b>             | <b>206</b>        | <b>0.09%</b> |

Source:

1. Cambodia National Malaria Center, accessed May 19, 2026 (<https://mis.cnm.gov.kh/Dashboard>)
2. Malaria Cases in Indonesia, accessed May 19, 2026 (<https://malaria.kemkes.go.id/case>)
3. Department of Public Health, Ministry of Health, Myanmar
4. Ministry of Health Singapore, accessed May 19, 2026 (<https://www.moh.gov.sg/others/resources-and-statistics/infectious-disease-statistics-2025-weekly-infectious-diseases-bulletin>)
5. Bureau of Epidemiology, Department of Disease Control, Ministry of Public Health Thailand, accessed May 19, 2026 ([https://dvis3.ddc.moph.go.th/t/DDC\\_CENTER\\_DOE/views/Weekly/sheet137%3Aembed=y&%3AisGuestRedirectFromVizportal=y&%3Aorigin=card\\_share\\_link](https://dvis3.ddc.moph.go.th/t/DDC_CENTER_DOE/views/Weekly/sheet137%3Aembed=y&%3AisGuestRedirectFromVizportal=y&%3Aorigin=card_share_link))

A close-up photograph of a person wearing a white lab coat, using a syringe to draw liquid from a small glass vial. The person's hands are the central focus, with the syringe held vertically. The background is a soft, out-of-focus light blue. The text 'Vaccine-Preventable Diseases' is overlaid in large, white, bold font on the left side of the image.

# Vaccine- Preventable Diseases

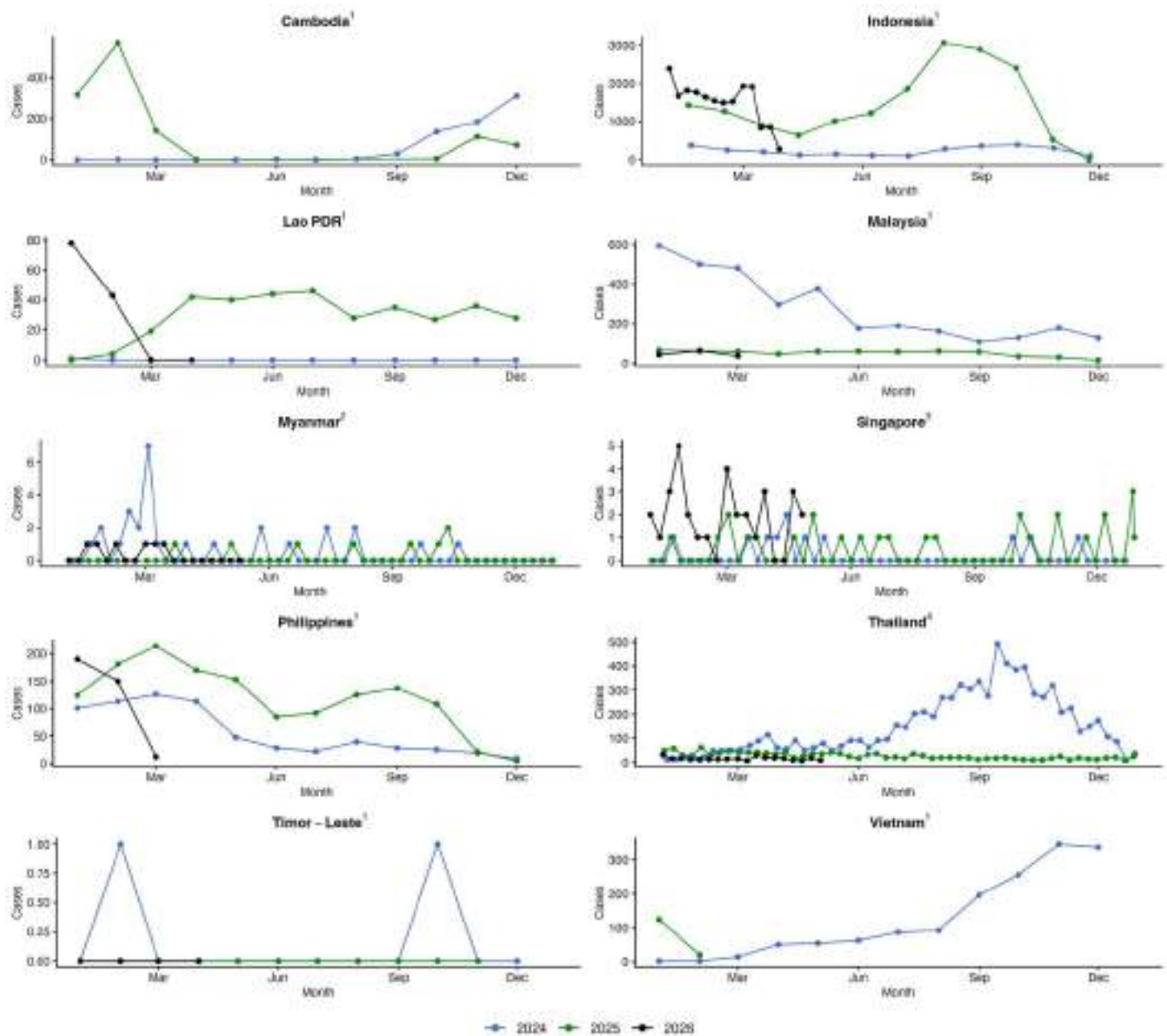
# MEASLES

## Key Findings

- The **ASEAN** region reported **167** new measles cases in Epi-week 19, 2026.
- The total number of measles cases from January 1 to May 16, 2026 are **20,587** cases with **0%** CFR.

## Trend of Measles cases in the ASEAN region, 2024 – 2026

Below are trend of measles cases among ASEAN Member States since January 1, 2024 up to May 16, 2026.



Source:

1. Provisional Measles and Rubella Data, World Health Organization, accessed May 19, 2026 (<https://immunizationdata.who.int/global?topic=Provisional-measles-and-rubella-data&location=>)Provisional Measles and Rubella Data, World Health Organization, accessed May 19, 2026 (<https://immunizationdata.who.int/global?topic=Provisional-measles-and-rubella-data&location=>)
2. Department of Public Health, Ministry of Health, Myanmar
3. Ministry of Health Singapore, accessed May 19, 2026 (<https://www.moh.gov.sg/others/resources-and-statistics/infectious-disease-statistics-2025-weekly-infectious-diseases-bulletin>)
4. Bureau of Epidemiology, Department of Disease Control, Ministry of Public Health Thailand, accessed May 19, 2026 ([https://dvis3.ddc.moph.go.th/t/DDC\\_CENTER\\_DOE/views/Weekly/sheet13?%3Aembed=y&%3AisGuestRedirectFromVizportal=y&%3Aorigin=card\\_share\\_link](https://dvis3.ddc.moph.go.th/t/DDC_CENTER_DOE/views/Weekly/sheet13?%3Aembed=y&%3AisGuestRedirectFromVizportal=y&%3Aorigin=card_share_link))



**ASEAN  
BIOLOGICAL THREATS  
SURVEILLANCE CENTRE**

Support generated by  
**ASEAN BIOLOGICAL THREATS SURVEILLANCE CENTRE**

Email: [support@biothreats.org](mailto:support@biothreats.org)

Facebook: [abtc\\_official](#)

Instagram: [abtc\\_official](#)