



ASEAN  
BIOLOGICAL THREATS  
SURVEILLANCE CENTRE

CC  
BV  
BB  
AA

# Morbidity and Mortality Weekly Report (MMWR)

Infectious & Emerging Diseases  
in the ASEAN Region

With Support by:



Korea Disease Control and  
Prevention Agency



in partnership with  
Canada



Kemenkes



ASSOCIATION  
OF SOUTHEAST  
ASIAN NATIONS



This report aims to provide the current situation on infectious and emerging diseases in the ASEAN Region. We collate various information from multiple official sources and publicly available sources and is published every week on Wednesday. For feedback and/or suggestions, please write to [support@aseanbiosurveillance.org](mailto:support@aseanbiosurveillance.org)

## Editorial

### ASEAN SECRETARIAT

Assistant Director and Head of Health Division  
Human Development Directorate

ASEAN Socio-Cultural Community Department

**Jennifer Frances dela Rosa, MPH, MSc HPPF**

Programme Coordinator (Health Security)

Mitigation of Biological Threats (MBT) Programme

**Michael Glen, MSSc**

### EDITORIAL TEAM

Editor-in-Chief

**Abdurrahman, MPH**

Managing Editor

**Aldilas Achmad Nursetyo, MD, MS**

Associate Editor

**Abdul Haris Ibrahim, MHI**

**Habibi Rohman Rosyad, MSc**

**Nindy Fadellah Wulan, MPH**

Copy Editor

**Ajeng Sekar Pratiwi, A.Md**

**Dwi Sasongko, A.Md.**

Supporting Staff

**Svetlana Pratiwi, SKM**

**Divva Kaamila, S.Tr.Kom**

**Natasha Alicia Putri, S.Tr.Kom**

### PUBLISHER

ASEAN Biological Threat Surveillance Centre

Health Policy Agency

Ministry of Health of Indonesia

Jl. Percetakan Negara No. 29 Johar Baru, Central Jakarta, Indonesia 10560

**E-mail:** [support@aseanbiosurveillance.org](mailto:support@aseanbiosurveillance.org)

**Facebook:** <https://www.facebook.com/abvc.official/>

**Instagram:** <https://www.instagram.com/abvc.official/>

## Table of Contents

<b>Emerging Diseases .....</b>	<b>2</b>
Mpox .....	3
COVID-19 .....	7
Influenza .....	9
Influenza-like Illness.....	10
<b>Zoonosis .....</b>	<b>11</b>
Rabies.....	12
<b>Vector-borne Diseases.....</b>	<b>13</b>
Dengue.....	14
Malaria .....	15
<b>Vaccine-preventable Diseases.....</b>	<b>16</b>
Measles .....	17



# Emerging Diseases

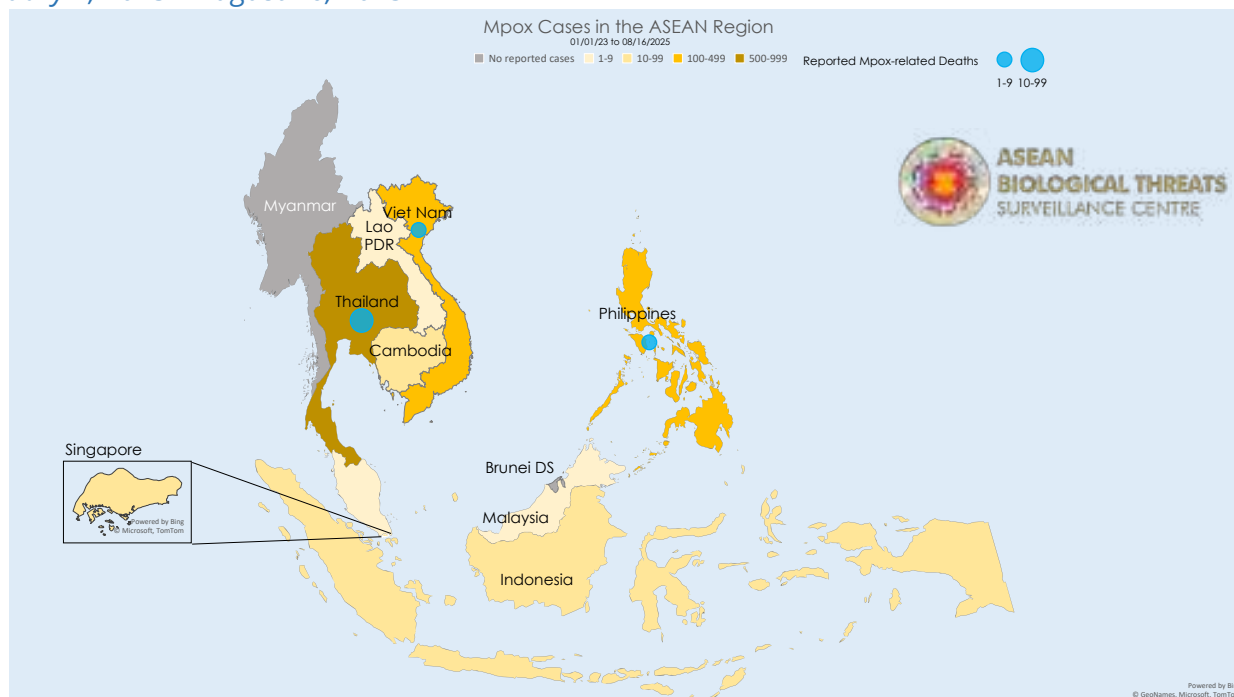
A person wearing a full-body white protective suit, including a hood and a face mask. They are also wearing black gloves. The person is holding a small, dark object in their gloved hand. The background is blurred, suggesting an indoor setting.



# MPOX

## Mpox Cases Reported in the ASEAN Region

January 1, 2023 – August 16, 2025



Source:

1. Ministry of Health Republic of Indonesia
2. Ministry of Health Singapore, accessed August 19, 2025, <https://www.moh.gov.sg/resources-statistics/infectious-disease-statistics/2023/weekly-infectious-diseases-bulletin>

## Key Findings

- From 1 January 2023 to 16 August 2025, **67,727** confirmed cases worldwide since 2023, including **353** deaths. Globally, the CFR was **0.50 %**.
- **1,429 confirmed cases** including **27 deaths** in the **ASEAN** region, with a CFR of **1.89%**.
- **66,120 confirmed cases** of mpox have been reported in **other regions** (other than the **ASEAN** region):

## Mpox cases in the ASEAN region (Jan. 1, 2023 to Aug. 16, 2025)

ASEAN Member States	Cumulative Cases 2023-2025	New Cases Since Previous Report	Cumulative Deaths 2023-2025	CFR
<b>Cambodia<sup>1</sup></b>	20	0	0	0.00%
<b>Indonesia<sup>2</sup></b>	87	0	0	0.00%
<b>Lao PDR<sup>3</sup></b>	1	0	0	0.00%
<b>Malaysia<sup>3</sup></b>	15	0	0	0.00%
<b>Philippines<sup>3</sup></b>	152	0	5	3.29%
<b>Singapore<sup>4</sup></b>	61	1	0	0.00%
<b>Thailand<sup>3</sup></b>	884	0	13	1.47%
<b>Vietnam<sup>3</sup></b>	209	0	9	4.31%
<b>ASEAN Total</b>	<b>1,429</b>	<b>1</b>	<b>27</b>	<b>1.89%</b>

Source:

1. Ministry of Health Cambodia
2. Ministry of Health Republic of Indonesia (<https://infeksiemerging.kemkes.go.id>)
3. WHO Mpox Outbreak: Global Trends, accessed August 19, 2025 ([https://worldhealthorg.shinyapps.io/mpox\\_global/](https://worldhealthorg.shinyapps.io/mpox_global/))
4. Ministry of Health Singapore, accessed August 19, 2025 (<https://www.moh.gov.sg/resources-statistics/infectious-disease-statistics/2023/weekly-infectious-diseases-bulletin>)



## Top 5 countries with the most mpox cases globally (Jan. 1, 2023 to Aug. 16, 2025)

Country	Cumulative Cases	New Cases Since Previous Report	Cumulative Deaths	CFR
<b>Democratic Republic of Congo</b>	24,700	0	71	0.29%
<b>Uganda</b>	7,514	0	46	0.61%
<b>United States of America</b>	5,014	0	10	0.20%
<b>Sierra Leone</b>	4,481	0	44	0.90%
<b>Burundi</b>	4,196	0	2	0.06%

Source: WHO Mpox Outbreak: Global Trends, accessed August 19, 2025 ([https://worldhealthorg.shinyapps.io/mpox\\_global/](https://worldhealthorg.shinyapps.io/mpox_global/))

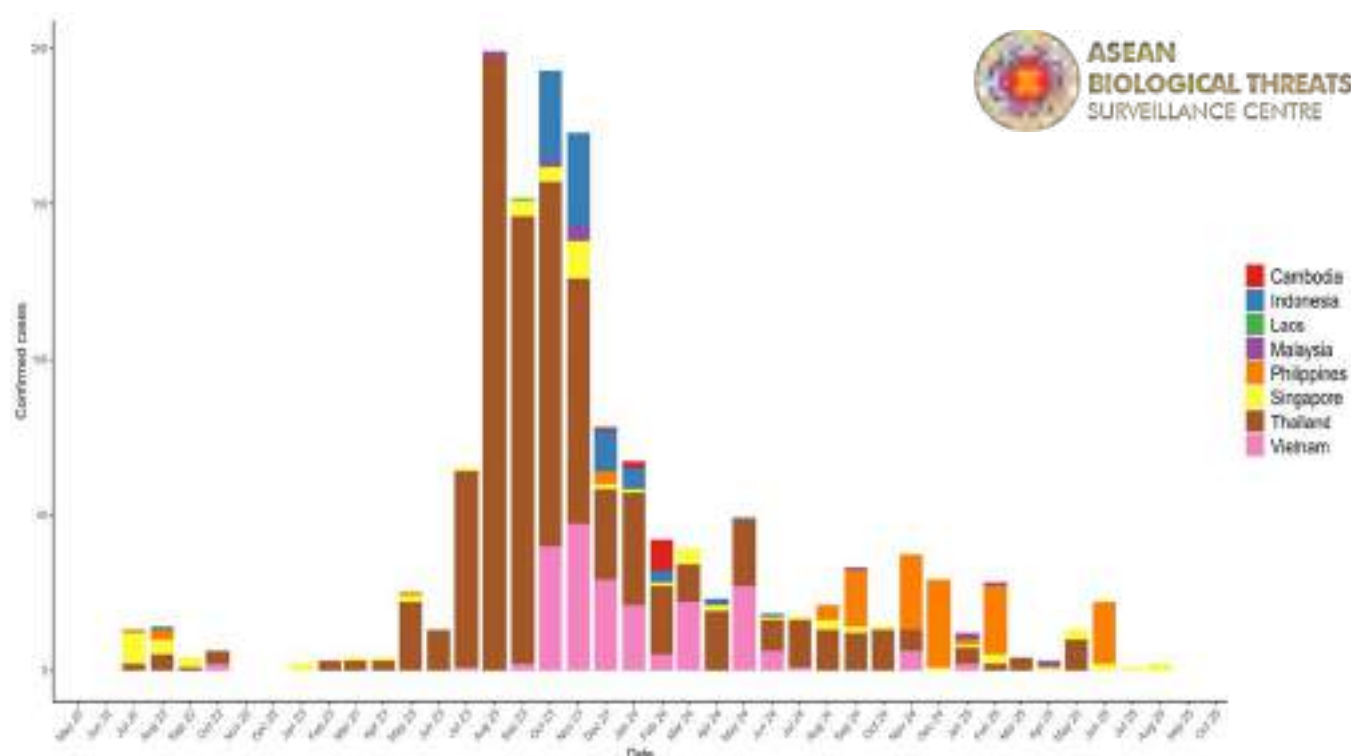
## Mpox cases per region (Jan. 1, 2023 to Aug. 16, 2025)

REGIONS	CUMULATIVE CASES 2023-2025	NEW CASES SINCE THE PREVIOUS REPORT	CUMULATIVE DEATHS	CFR
<b>AFRICA</b>	43,905	0	191	0.44%
<b>AMERICAS</b>	11,492	0	99	0.86%
<b>ASEAN</b>	1,429	1	27	1.89%
<b>ASIA &amp; OCEANIA</b>	6,196	0	31	0.50%
<b>EUROPE</b>	4,705	0	5	0.11%
<b>TOTAL</b>	<b>67,727</b>	<b>0</b>	<b>353</b>	<b>0.52%</b>

Source: WHO Mpox Outbreak: Global Trends, accessed August 19, 2025 ([https://worldhealthorg.shinyapps.io/mpox\\_global/](https://worldhealthorg.shinyapps.io/mpox_global/))

## Trend of Mpox Confirmed Cases in the ASEAN Region

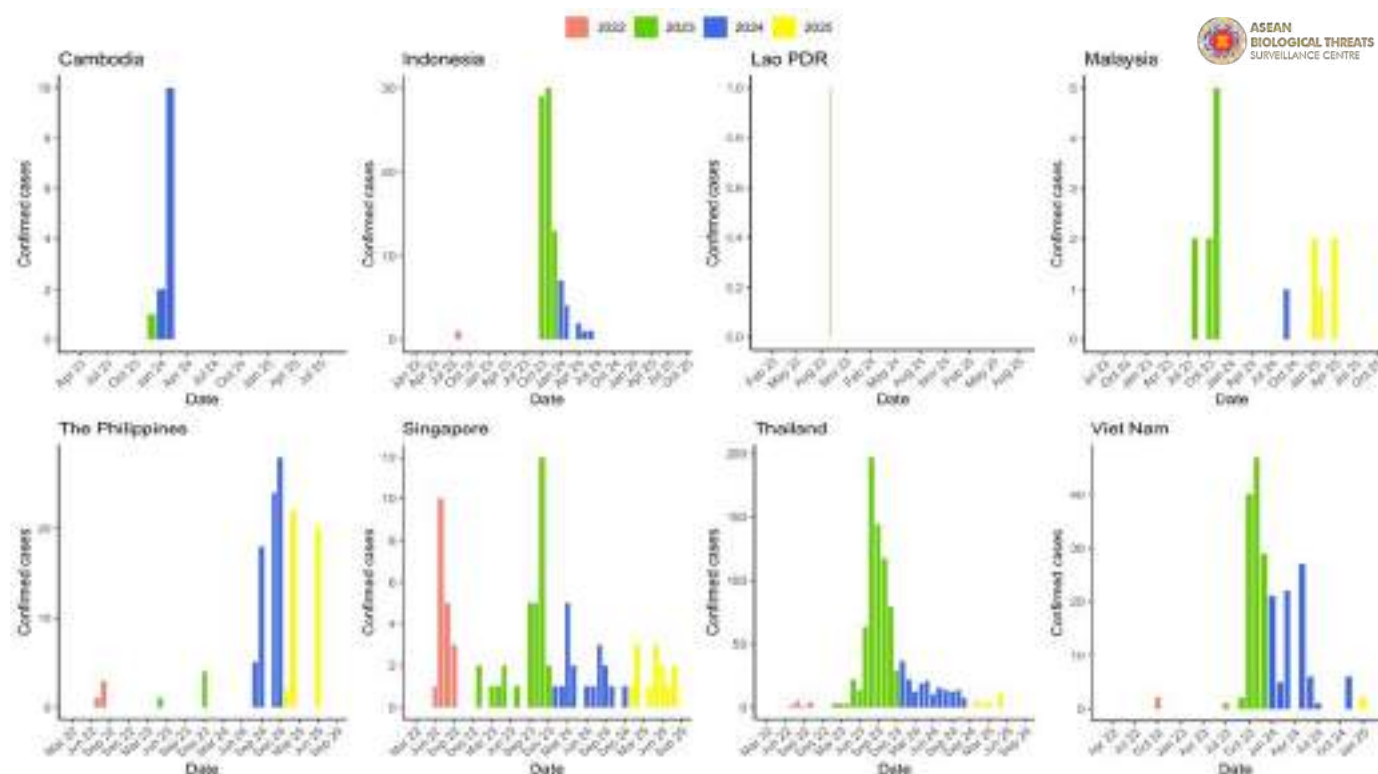
January 1, 2022 to August 16, 2025



Source: Our World in Data, accessed on August 19, 2025 (<https://ourworldindata.org/monkeypox>)

## Trend of Mpox Confirmed Cases among ASEAN Member States

January 1, 2022 to August 16, 2025

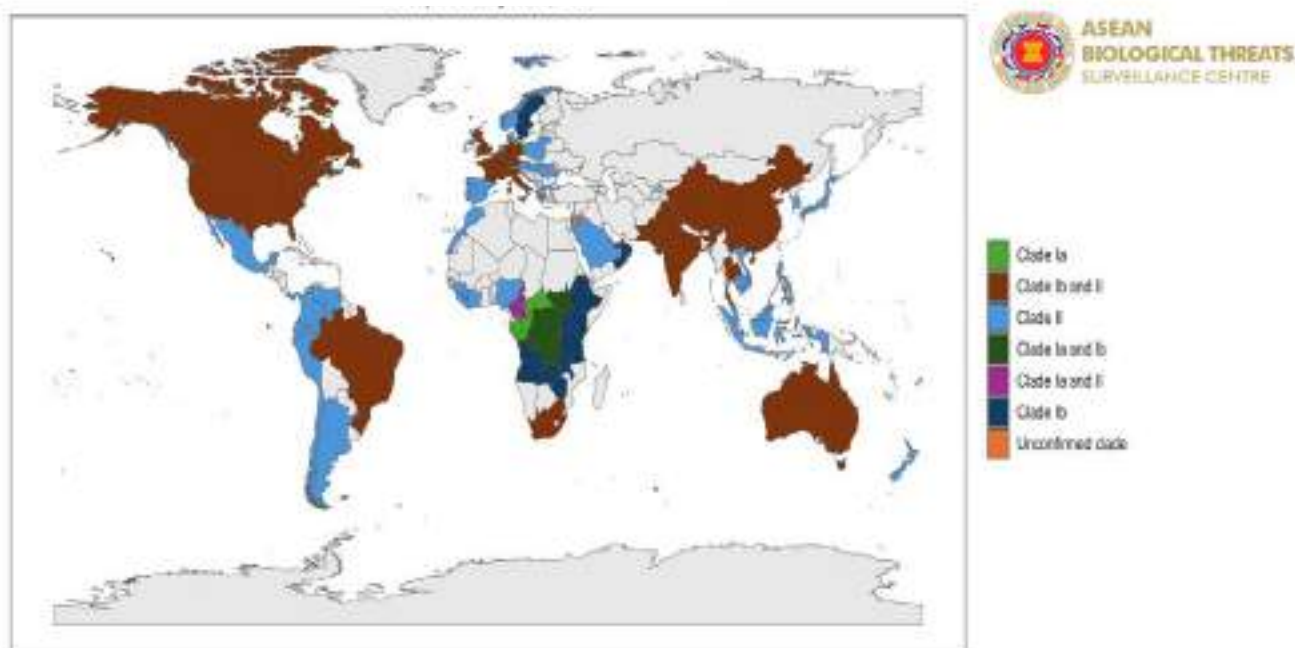


Source: Our World in Data, accessed on August 19, 2025 (<https://ourworldindata.org/monkeypox>)

## Distribution of Mpox Variants in The Global

As of August 16, 2025

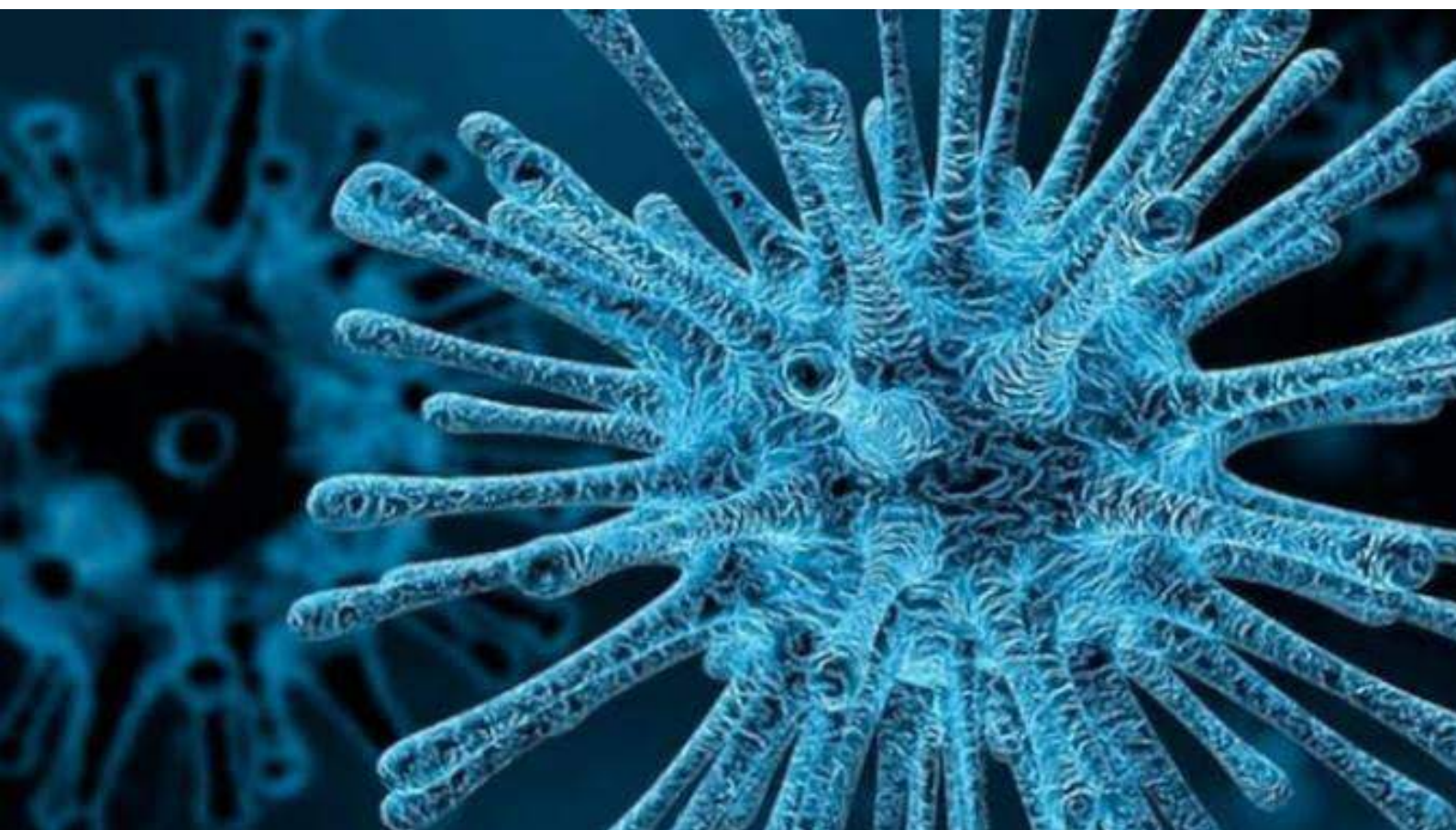
### Distribution of Mpox Variant (Clade) in The Global



Source: GISAID and WHO



## Distribution of Mpox Variant (Clade) in the ASEAN and Neighbouring Countries and Areas As of August 16, 2025





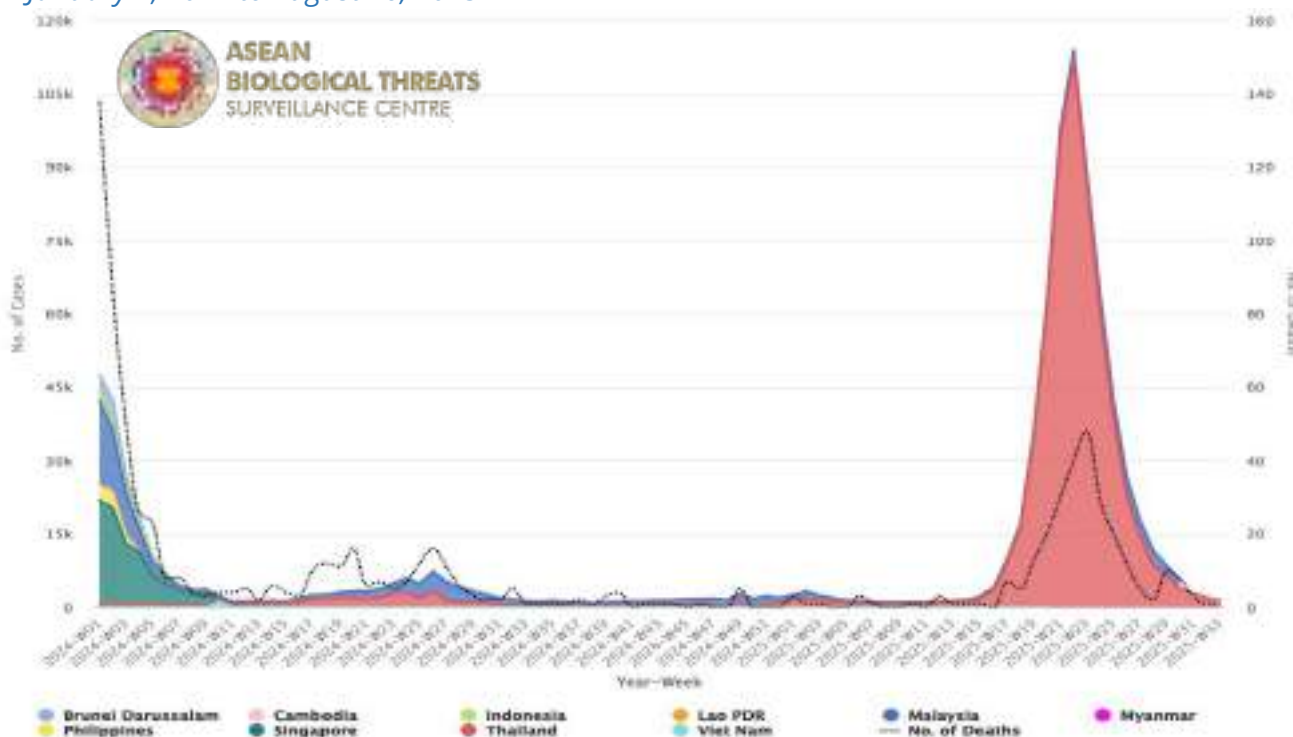
## COVID-19

### Key Findings

- As of 16 August 2025 (5PM, GMT+7), there were **778,368,577** confirmed cases **worldwide**, including **7,098,758** deaths. Globally, the Case Fatality Rate (CFR) was **0.91%**.
- 37,730,166** total confirmed cases of COVID-19 have been reported in the **ASEAN Region**.
- The CFR in the **ASEAN Region** was **0.98%**.
- In August 2025, **NB.1.8.1** variant show a dominance number in Thailand and Vietnam. Meanwhile, Cambodia, Singapore and Malaysia show dominance in **Omicron B.1.1.529+BA.\*** variant.

### ASEAN Weekly COVID-19 Cases and Deaths

From January 1, 2024 to August 16, 2025



Sources: [Singapore Government](#), [MOH Indonesia](#), [MOH Cambodia](#), [DDC Thailand](#), [MOH Myanmar](#), [MOH Malaysia](#), and [WHO](#) accessed on August 19, 2025

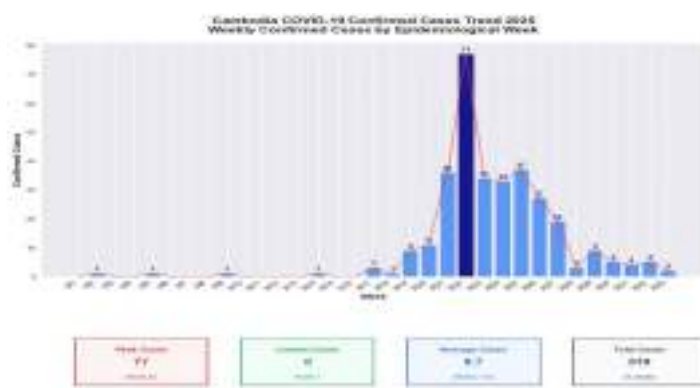
- A major peak in case numbers occurred in mid-2025 until week 22 as the highest peak of the cases reported. Meanwhile, after week 23, the cases continued to decrease significantly until the week of 33.

### ASEAN Weekly COVID-19 Cases among ASEAN Member States

From January 1 to August 16, 2025

#### Cambodia:

- COVID-19 cases in Cambodia remained very low from Week 1 to Week 16 of 2025, with most weeks reporting zero or one case.
- A noticeable increase in weekly cases began in Week 19, rising sharply to 77 cases by Week 22.
- No deaths were reported throughout the 33-week period, suggesting mild disease or effective healthcare response.



Source: [MOH Cambodia](#), accessed on August 19, 2025



## Indonesia:

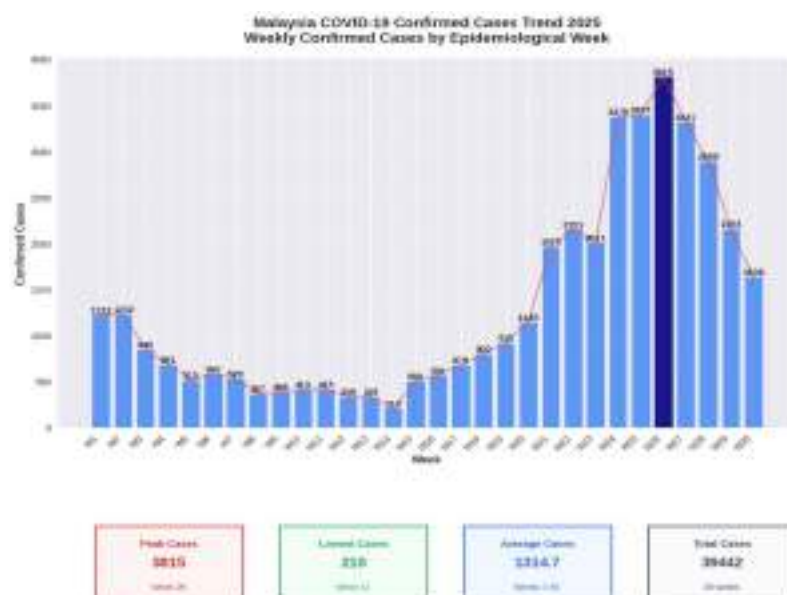
- Indonesia demonstrated effective pandemic control with cases declining from a peak of 27 in week 1 to near-zero levels by weeks 12-16, indicating successful implementation of public health measures early in 2025.
- The overall trend shows a well-managed outbreak with an average of only 9.2 cases per week, and zero deaths reported throughout the 27-week period, suggesting robust healthcare system response and disease surveillance.
- There was a brief increase in cases during weeks 17-19 (reaching 15 cases) that are likely happening during 22-32.



Source: [MOH Indonesia](#), accessed on August 19, 2025

## Malaysia:

- U-shaped trend: Cases started high (1,222-1,232), dropped significantly to a minimum of 210 cases in week 14, then surged dramatically to peak at 2,151 cases by week 22.
- Accelerating growth phase: The resurgence from week 15 onwards shows exponential growth, with cases more than quadrupling in just 8 weeks (500 to 2,151).
- Very low mortality: Despite more than 35 thousand total cases across 30 weeks, two deaths were recorded, suggesting either effective treatment protocols or a less severe variant.



Source: [MOH Malaysia](#), accessed on August 19, 2025

## Myanmar:

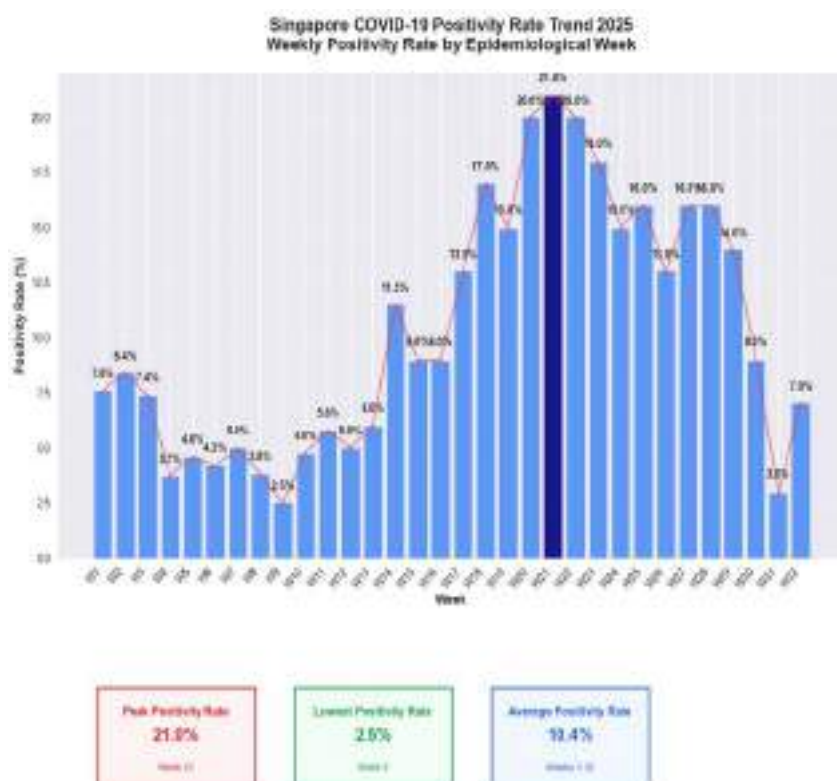
- The total number of COVID-19 cases reported in Myanmar for the week's analyzed in 2025 was 161.
- On average, Myanmar reported five COVID-19 cases per week during this period.
- The peak number cases were reported in week 24 with more than 50 cases. Meanwhile, the lowest reported cases occurred in the earliest week this year from week 1 to week 17. During these weeks, Myanmar reported no cases on COVID-19.



Source: MOH Myanmar, accessed on August 19, 2025

## Singapore:

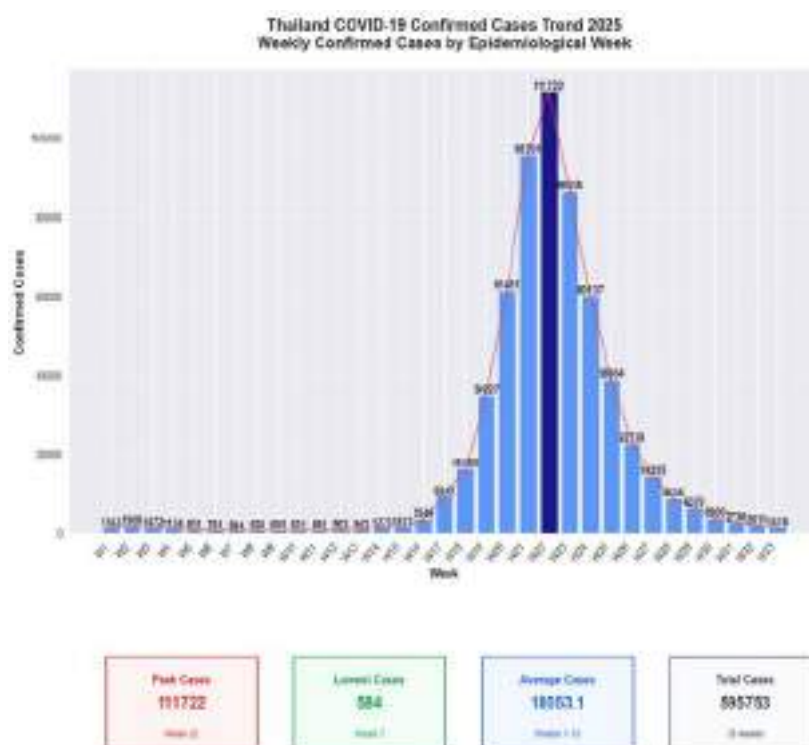
- Based on the last press release by Minister of Health of Singapore on May 13, 2025. The estimated number of COVID-19 cases in the week of 27 April to 3 May 2025 rose to 14,200 cases, compared to 11,100 cases in the previous week.
- At present, LF.7 and NB.1.8 (both descendants of the JN.1 variant) are the main COVID-19 variants circulating in Singapore, together accounting for more than two-thirds of locally sequenced cases.
- From the ILI/SARI Singapore sentinel data, the Covid-19 positivity rate trend has increased significantly to reach 21% in the week 21 of 2025.
- Compared to week 22, trend significantly plunged in week 32 with 7% positivity rate.



Source: [Singapore Government](#), accessed on August 19, 2025

## Thailand:

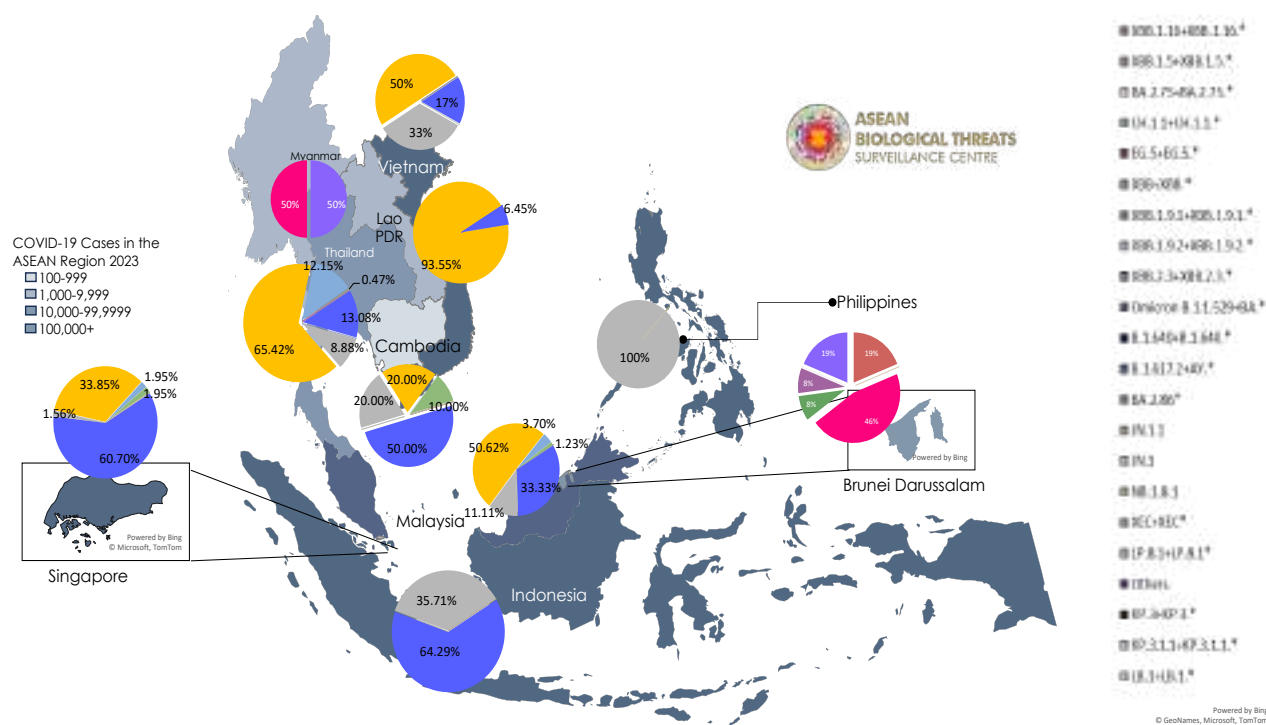
- Early Phase (W1–W15): Sporadic and low case counts with intermittent deaths.
- Acceleration Phase (W16–W21): Rapid, exponential rise in cases indicates a shift to widespread community transmission, potentially due to mass gatherings.
- Week 22 now represents the absolute peak of Thailand's COVID-19, with the highest case count more than 100,000 cases.
- After the week 23, the cases significantly decrease until week 33 by more than 100,000 cases.



Source: [DDC Thailand](#), accessed on August 19, 2025

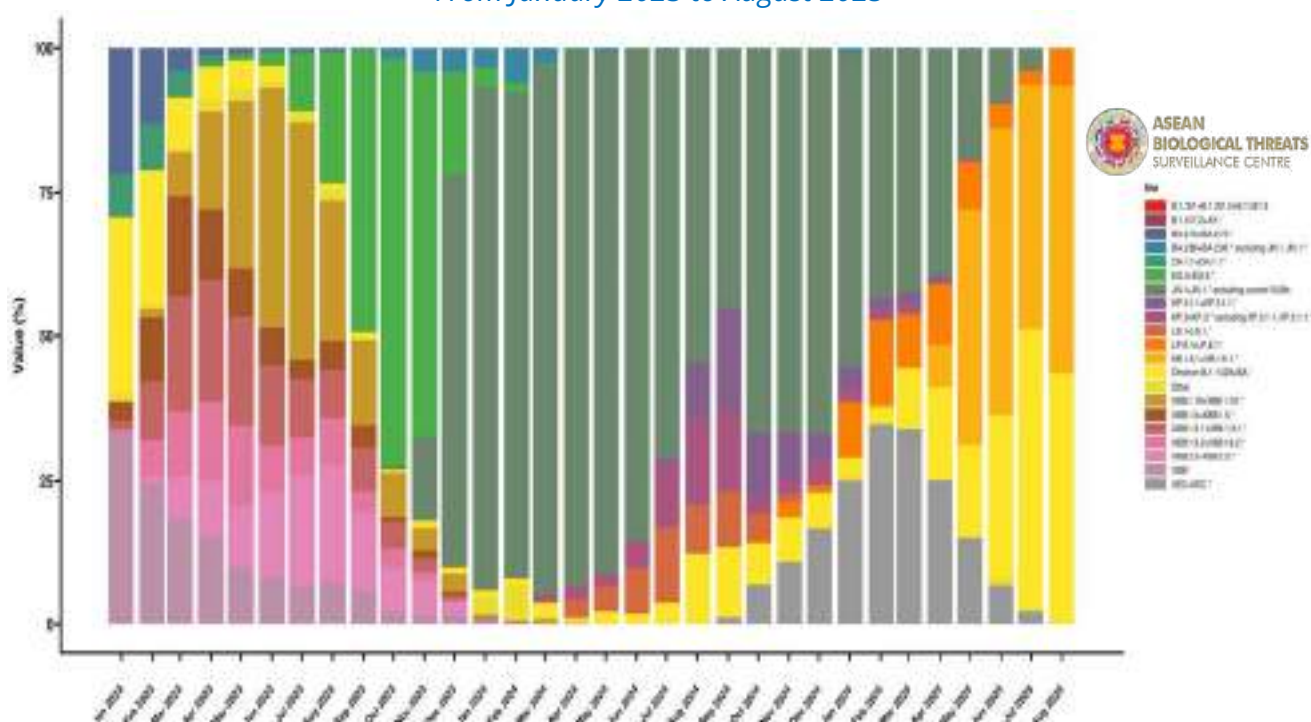


## COVID-19 Variants Frequencies Among the ASEAN Member States As of August 2025



In August 2025, the latest submission on GISAID by Cambodia, Indonesia, Lao PDR, Malaysia and Singapore show dominance in **Omicron B.1.1.529+BA.\*** variant for most of the countries except Lao PDR and Malaysia where **NB.1.8.1** was the dominant variant in the country.

## COVID-19 Variants Frequencies in the ASEAN Region From January 2023 to August 2025





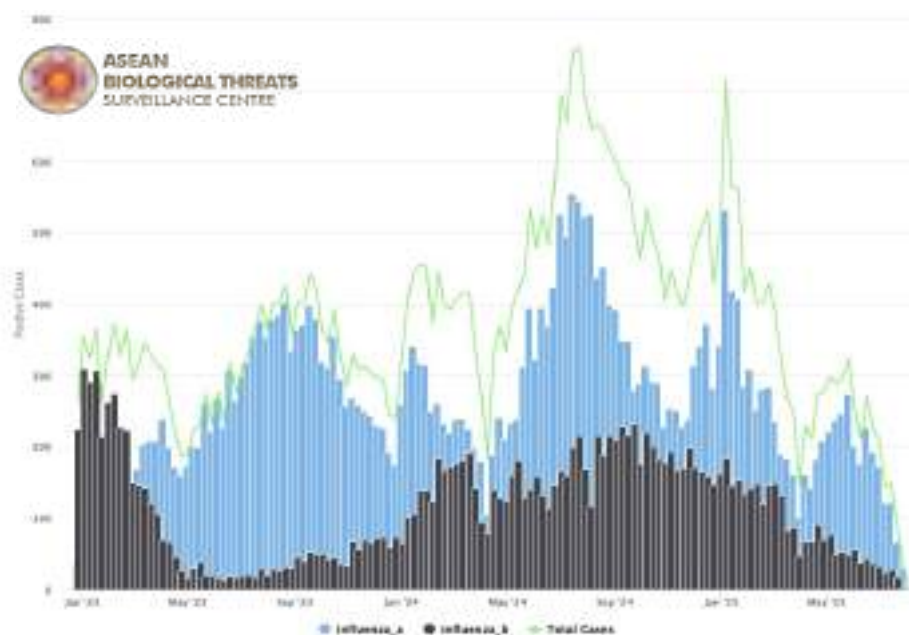
# INFLUENZA

## Key Findings

- Recently, most influenza cases among ASEAN Member States experience a downward trend.
- While influenza-like illness (ILI) and severe acute respiratory infection (SARI) increase slightly among some ASEAN Member States.

## Trends of Influenza Confirmed Cases in the ASEAN region

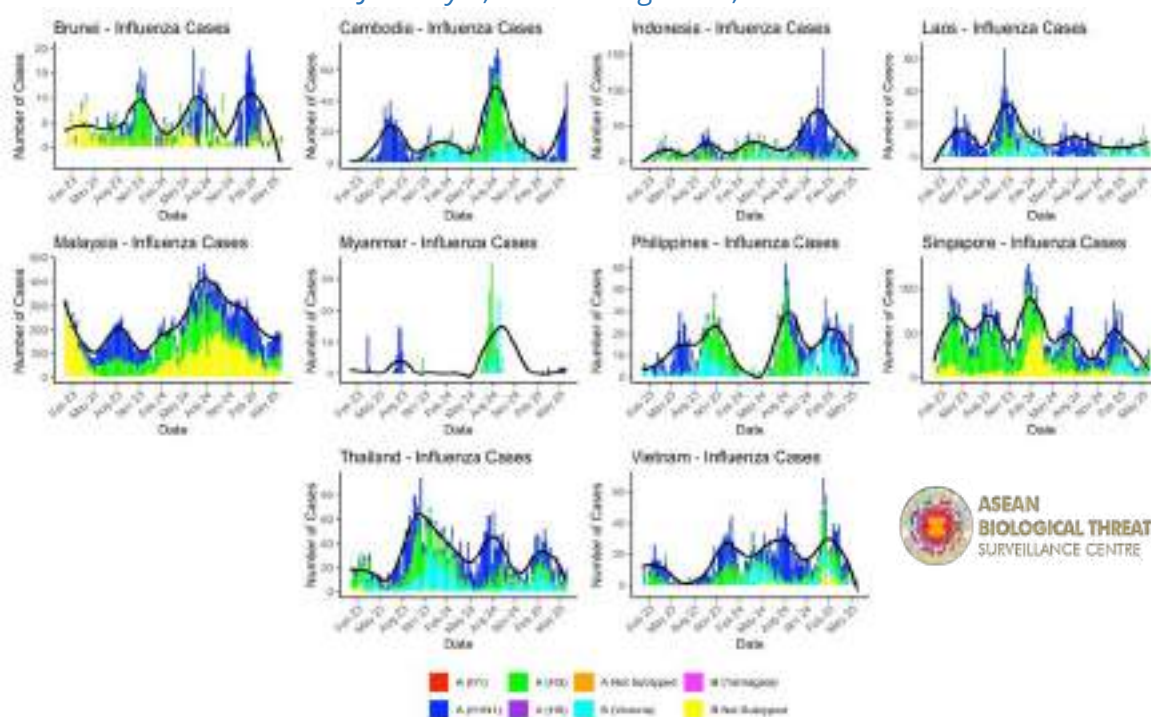
From January 1, 2023 to August 16, 2025



Source: WHO FluNet, accessed on August 19, 2025 (<https://www.who.int/tools/fluNet>)

## Trend of Influenza Cases among ASEAN Member States

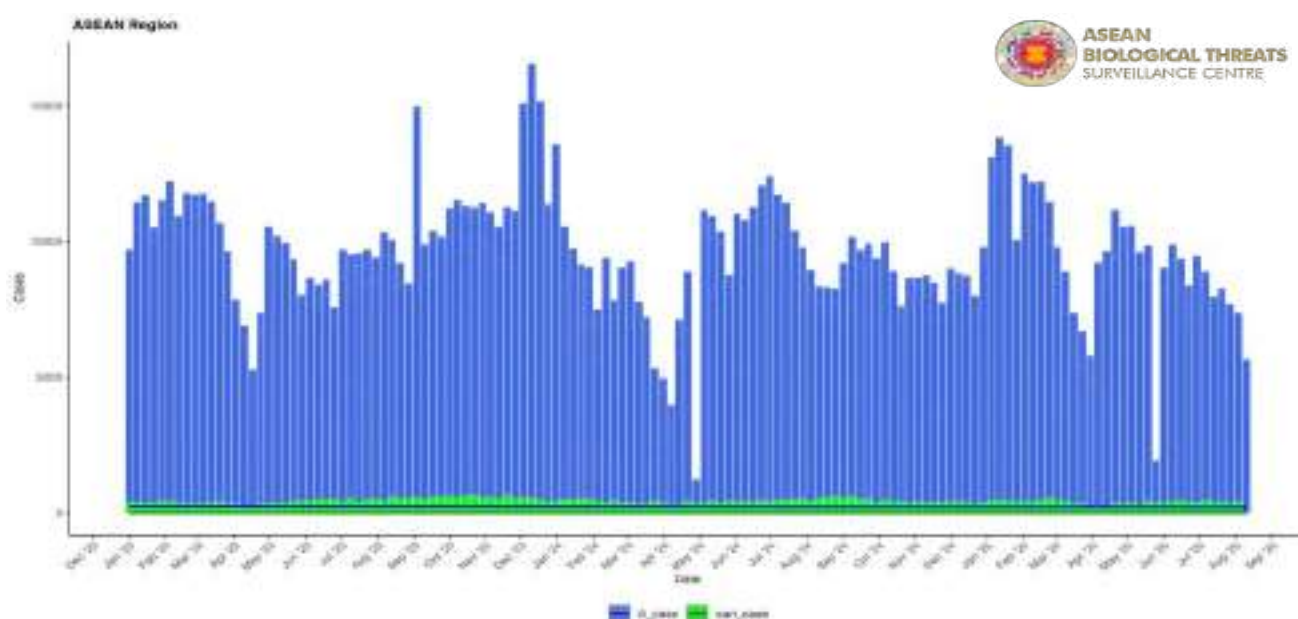
January 1, 2023 to August 16, 2025



Source: WHO FluNet, accessed on August 19, 2025 (<https://www.who.int/tools/fluNet>)

## Trend of Influenza-like Illness (ILI) and Severe Acute Respiratory Illness (SARI) in the ASEAN Region

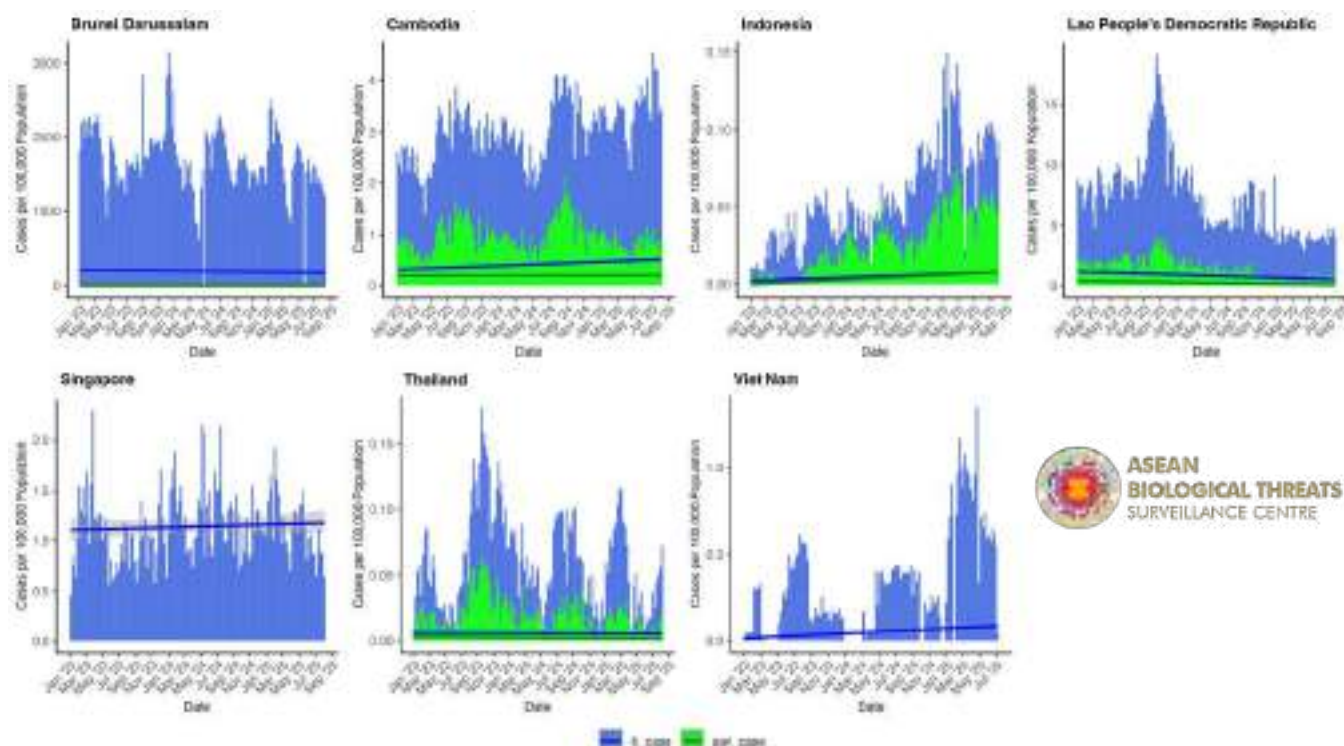
January 1, 2023 to August 16, 2025



Source: WHO FluID, accessed August 19, 2025 (<https://www.who.int/teams/global-influenza-programme/surveillance-and-monitoring/influenza-surveillance-outputs>)

## Trend of Influenza-like Illness (ILI) and Severe Acute Respiratory Illness (SARI) among ASEAN Member States

January 1, 2023 to August 16, 2025



Source: WHO FluID, accessed August 19, 2025 (<https://www.who.int/teams/global-influenza-programme/surveillance-and-monitoring/influenza-surveillance-outputs>)

# Zoonosis







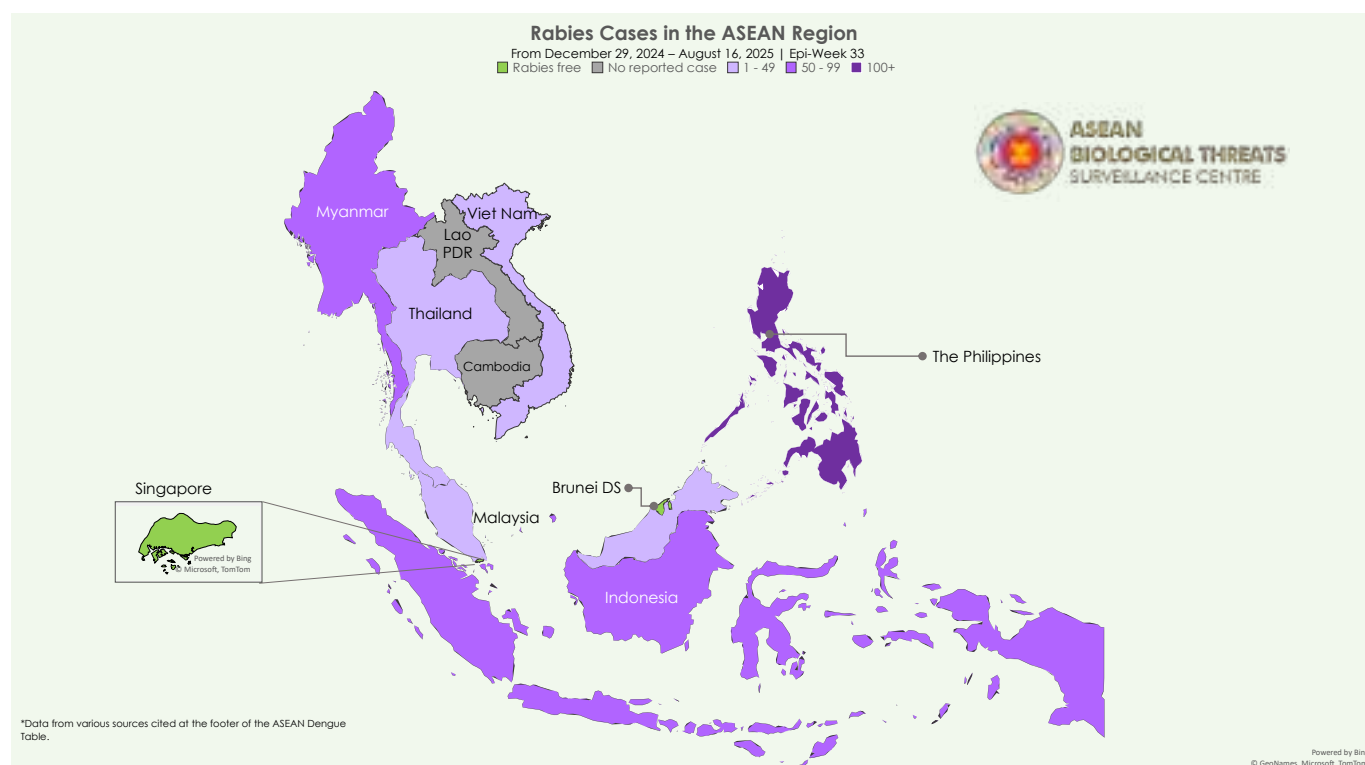
# RABIES

## Rabies Cases in the ASEAN Region

From December 29, 2024 to August 16, 2025 (Epi-Week 33, 2025)

### Key Findings

- The **ASEAN** region reported **88** new rabies cases in Epiweek 33, 2025.
- Up to August 16, 2025, the region reported **426** total cases with **100%** CFR.



## Rabies cases in the ASEAN region

Country	Epi-Week Reported	Cumulative Cases	New Cases Since Previous Report	Cumulative Deaths	CFR
<b>Brunei Darussalam</b>			<b>Rabies-free country</b>		
<b>Cambodia</b>	-	-	-	-	-
<b>Indonesia<sup>1</sup></b>	Week 31	94	-	94	100%
<b>Lao PDR</b>	-	-	-	-	-
<b>Malaysia<sup>2</sup></b>	Week 23	1	-	1	100%
<b>Myanmar<sup>3</sup></b>	Week 32	71	1	71	100%
<b>Philippines<sup>2</sup></b>	Week 31	211	87	211	100%
<b>Singapore</b>			<b>Rabies-free country</b>		
<b>Thailand<sup>2</sup></b>	Week 29	7	-	7	100%
<b>Viet Nam<sup>2</sup></b>	Week 29	42	-	42	100%
<b>Total</b>		<b>426</b>	<b>88</b>	<b>426</b>	<b>100%</b>

Source:

- Ministry of Health, Republic of Indonesia
- Bluedot Platform, accessed August 19, 2025 (<https://portal.bluedot.global/>)
- Department of Public Health, Ministry of Health, Myanmar

# Vector-Borne Diseases





# DENGUE

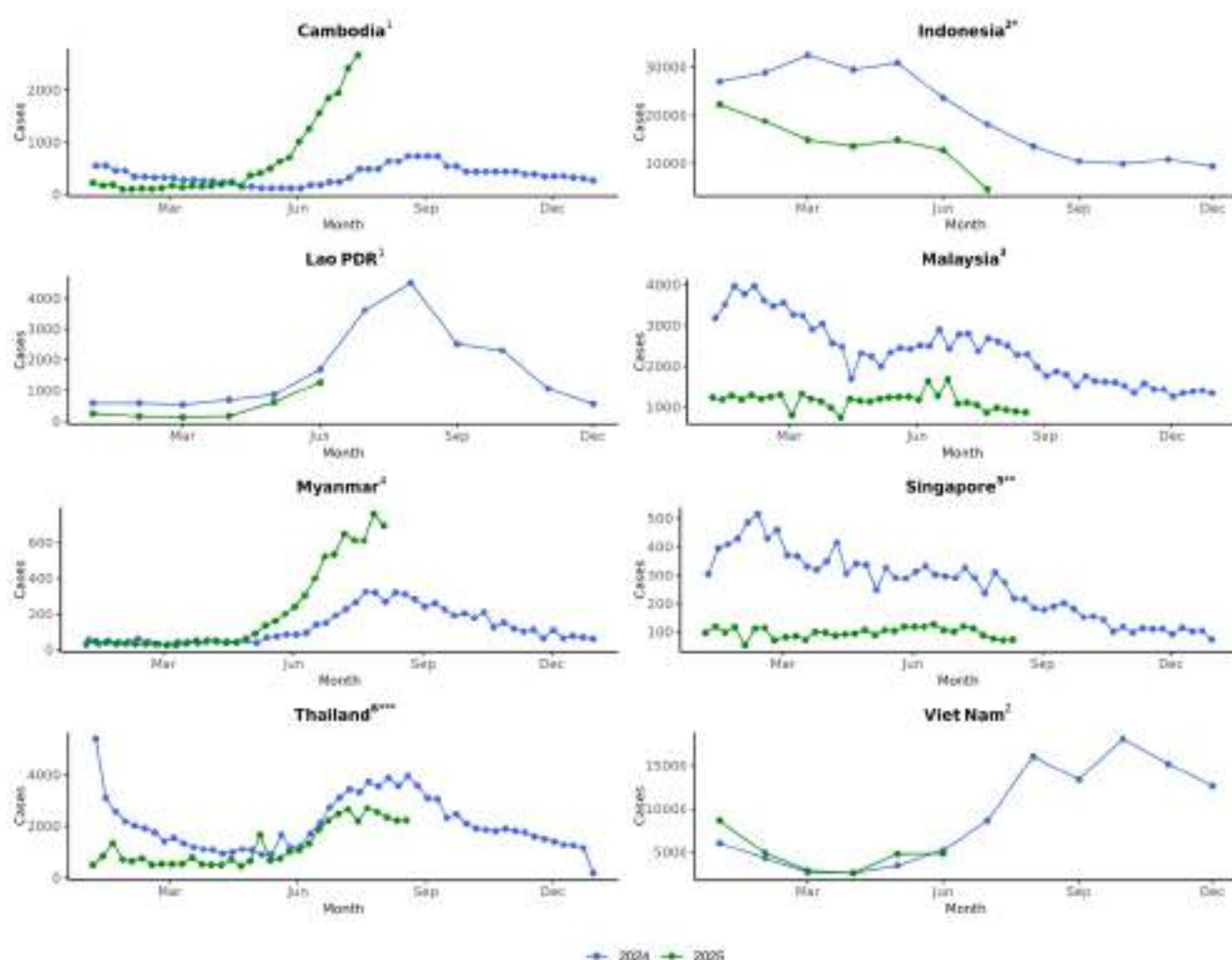
## Dengue Cases in the ASEAN Region

From December 29, 2024 to August 16, 2025 (Epi-Week 32, 2025)

### Key Findings

- The **ASEAN** region reported **10,564** new dengue cases in Epiweek 33, 2025.
- Up to August 16, 2025, the region reported **241,380** total cases and 566 total deaths with **0.23% CFR**.
- Most dengue trends in 2025 among AMS showing lower number of cases compared to previous year at the same period. Viet Nam showing higher trend of cases compared to previous year. While Cambodia and Myanmar showing significant increase of dengue cases compared to previous year at the same period.

### Trend of Dengue cases in the ASEAN region, 2024 - 2025



Source:

- WHO WPRO, "Dengue," World Health Organization, accessed August 19, 2025 (<https://www.who.int/westernpacific/emergencies/surveillance/dengue>).
- WHO Global Dengue Surveillance, accessed August 19, 2025 ([https://worldhealthorg.shinyapps.io/dengue\\_global/](https://worldhealthorg.shinyapps.io/dengue_global/)).
- Portal Rasmi iDengue untuk Komuniti, accessed August 19, 2025 (<https://idengue.mysa.gov.my/>).
- Department of Public Health, Ministry of Health, Myanmar
- Ministry of Health. "Weekly Infectious Disease Bulletin", accessed August 19, 2025. (<https://www.moh.gov.sg/resources-statistics/infectious-disease-statistics/2025/weekly-infectious-diseases-bulletin>)
- Bureau of Epidemiology, Department of Disease Control, Ministry of Public Health Thailand, accessed August 19, 2025, ([https://dvis3.ddc.moph.go.th/t/DDC\\_CENTER\\_DOE/views/DDS2/sheet33?%3Aembed=y&%3AisGuestRedirectFromVizportal=y](https://dvis3.ddc.moph.go.th/t/DDC_CENTER_DOE/views/DDS2/sheet33?%3Aembed=y&%3AisGuestRedirectFromVizportal=y))

- Data were updated and collected from official sources, which may have a 2-8 weeks delay in reporting. Data must be interpreted cautiously.

\*Notified dengue cases only includes severe cases Dengue Hemorrhagic fever (DHF) and Dengue Shock Syndrome (DSS)

\*\*Notified dengue cases only includes Dengue Fever (DF) and DHF

\*\*\*Notified dengue cases include all type of cases DF, DHF, and DSS





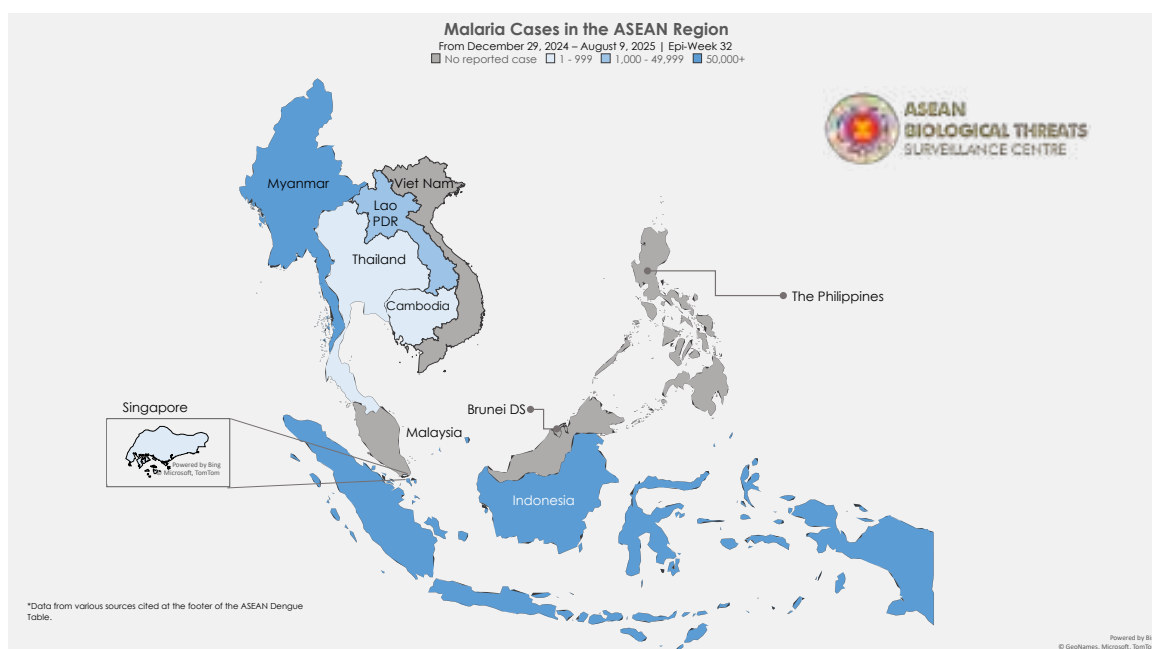
# MALARIA

## Malaria Cases in the ASEAN Region

From December 29, 2024 to August 16, 2025 (Epi-Week 33, 2025)

### Key Findings

- The **ASEAN** region reported **7,739** new malaria cases in Epiweek 33, 2025.
- Up to August 16, 2025, the region reported **484,101** total cases and **76** deaths with **0.02%** CFR.



## Malaria cases in the ASEAN region

Country	Epi-Week Reported	Cumulative Cases	New Cases Since Last Week	Cumulative Deaths	CFR
<b>Brunei Darussalam</b>	-	-	-	-	-
<b>Cambodia<sup>1</sup></b>	Week 33	78	3	0	0.00%
<b>Indonesia<sup>2</sup></b>	Week 31	384,744	-	68	0.02%
<b>Lao PDR<sup>3</sup></b>	Week 33	6,746	1,131	1	0.02%
<b>Malaysia</b>	-	-	-	-	-
<b>Myanmar<sup>4</sup></b>	Week 31	89,495	6,530	5	0.01%
<b>Philippines</b>	-	-	-	-	-
<b>Singapore<sup>5</sup></b>	Week 32	23	4	0	0.00%
<b>Thailand<sup>6</sup></b>	Week 33	3,015	71	2	0.07%
<b>Viet Nam</b>	-	-	-	-	-
<b>Total</b>		<b>484,101</b>	<b>7,739</b>	<b>76</b>	<b>0.02%</b>

Source:

- Cambodia National Malaria Center, accessed August 19, 2025 (<https://mis.cnm.gov.kh/Dashboard>)
- Malaria Cases in Indonesia, accessed August 19, 2025 (<https://malaria.kemkes.go.id/case>)
- Centre of Information and Education for Health, Ministry of Health Lao PDR, accessed August 19, 2025 (<https://www.facebook.com/CCEH.MoH.Lao/>)
- Department of Public Health, Ministry of Health, Myanmar
- Ministry of Health Singapore, accessed August 19, 2025 (<https://www.moh.gov.sg/others/resources-and-statistics/infectious-disease-statistics-2025-weekly-infectious-diseases-bulletin>)
- Bureau of Epidemiology, Department of Disease Control, Ministry of Public Health Thailand, accessed August 19, 2025 ([https://dvis3.ddc.moph.go.th/DDC\\_CENTER\\_DOE/views/DDS2/sheet33?%3Aembed=y&%3AisGuestRedirectFromVizportal=y](https://dvis3.ddc.moph.go.th/DDC_CENTER_DOE/views/DDS2/sheet33?%3Aembed=y&%3AisGuestRedirectFromVizportal=y))

A close-up photograph of a person wearing a white lab coat, using a syringe to draw liquid from a small glass vial. The person's hands are visible, and the background is a soft-focus clinical setting. The image is overlaid with a semi-transparent dark grey filter.

# Vaccine- Preventable Diseases



# MEASLES

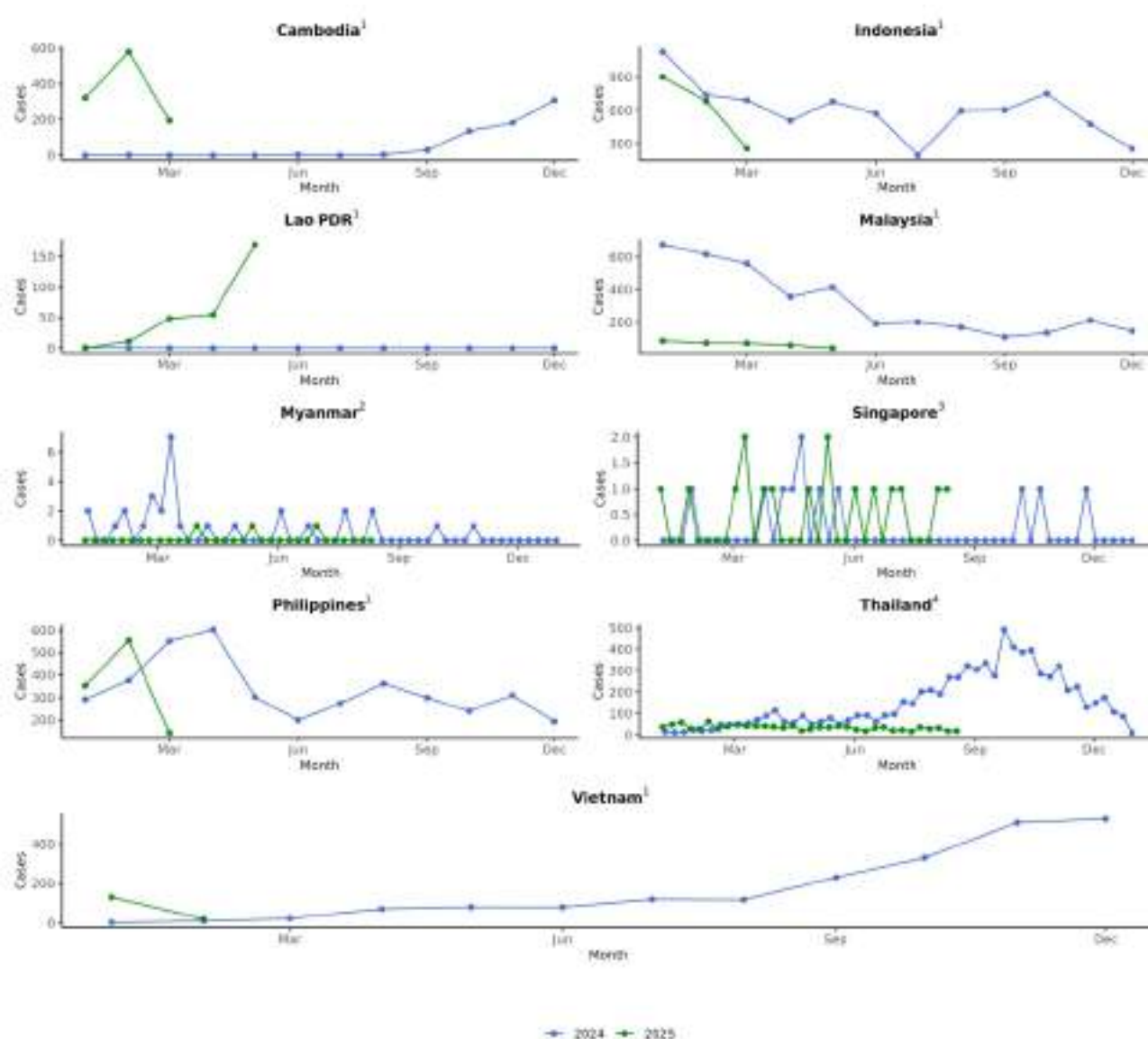
## Measles Cases in the ASEAN Region

From December 29, 2024 to August 16, 2025 (Epi-Week 33, 2025)

### Key Findings

- The **ASEAN** region reported **20** new measles cases in Epiweek 33, 2025.
- Up to August 16, 2025, the region reported **5,906** total cases with **0%** CFR.
- Mostly measles cases in the ASEAN Region slightly decrease compared to the same period on the previous year.

### Trend of Measles cases in the ASEAN region, 2024 - 2025



Source:

- Provisional Measles and Rubella Data, World Health Organization, accessed August 19, 2025 (<https://immunizationdata.who.int/global?topic=Provisional-measles-and-rubella-data&location=>)
- Department of Public Health, Ministry of Health, Myanmar
- Ministry of Health Singapore, accessed August 19, 2025 (<https://www.moh.gov.sg/others/resources-and-statistics/infectious-disease-statistics-2025-weekly-infectious-diseases-bulletin>)
- Bureau of Epidemiology, Department of Disease Control, Ministry of Public Health Thailand, accessed August 19, 2025 (<http://doe.moph.go.th/surdata/index.php>)





**ASEAN  
BIOLOGICAL THREATS  
SURVEILLANCE CENTRE**

Support generated by  
**ASEAN BIOLOGICAL THREATS SURVEILLANCE CENTRE**

Email: [support@abi-ds.com.sg](mailto:support@abi-ds.com.sg)

Facebook: [abi-ds-official](#)

Instagram: [abi-ds-official](#)